

LSH SERIES

Rack and Panel Connectors



FEATURES & BENEFITS

- ▶ 200 A per contact
- ▶ 1 to 6 contacts
- ▶ Low mating forces
- ▶ Polyphenylene sulfide (PPS) insulators
- ▶ Radial float 0.049" (1.25 mm)
- ▶ 0.241" (6.12mm) contacts
- ▶ Threaded terminals
- ▶ Single row 0.925" (23.50mm) pitch
- ▶ Blind mate capability

The LSH rack and panel connector from Smiths Connectors is deployed across many different market segments including aerospace, automotive, industrial, test & measurement, and mass transit. The foundation upon which the LSH is built is the leading-edge Hypertac® hyperboloid technology. This world class interconnect technology ensures LSH connectors are immune to shock, vibration and fretting. In addition, it features the low insertion and extraction forces that are a catalyst for easy mating. The LSH Series delivers customers a life cycle that can be maintained for 100,000+ mating cycles and at an extremely low cost of ownership.

TECHNICAL CHARACTERISTICS

Number of Rows/Ways	1 Row
Pitch	0.925" (23.50 mm)
Contact Positions	1 to 6
Contact Termination	Threaded
Nominal Current	200 A per contact
Nominal Pin Diameter	0.241" (6.12 mm)
Resistance	< 0.10 milliohms
Contact Life Cycles	100,000

MECHANICAL & ENVIRONMENTAL

Contact Style/Termination	Threaded
Operating Temperature	-55° to 125°C
Extraction Force	80 to 160 oz. max per contact

MATERIALS & FINISHES

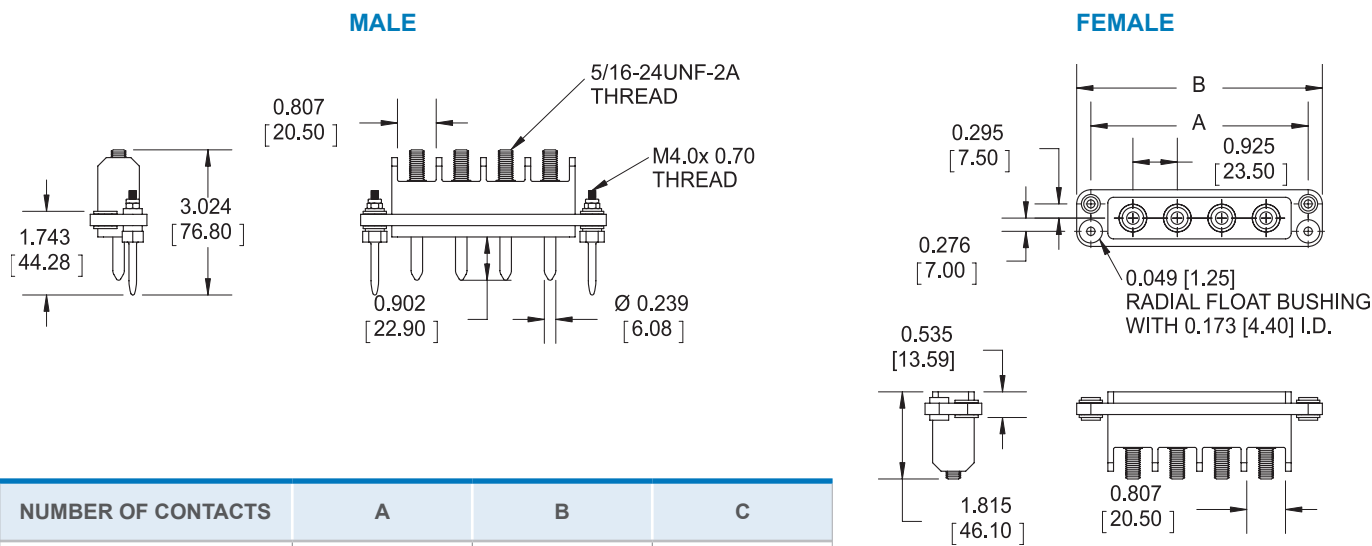
Insulator	Polyphenylene sulfide (PPS)
Contact	Beryllium copper
Contact Plating	Gold over nickel

ELECTRICAL

Current Rating	200 A per contact
DWV	3000 V RMS
Breakdown Voltage	4000 V RMS
Insulation Resistance	> 10 ⁶ megaohms at 500 VDC

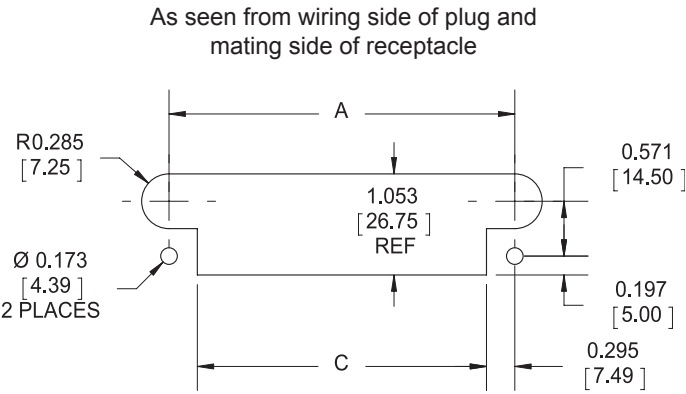
DIMENSIONS

CONNECTOR DIMENSIONS

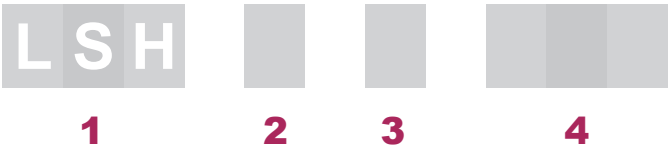


NUMBER OF CONTACTS	A	B	C
1	1.752 [44.50]	2.342 [59.50]	1.161 [29.50]
2	2.677 [68.00]	3.268 [83.00]	2.087 [53.00]
3	3.602 [91.50]	4.193 [106.50]	3.012 [76.50]
4	4.528 [115.00]	5.118 [130.00]	3.937 [100.00]
5	5.453 [138.50]	6.043 [153.50]	4.862 [123.50]
6	6.378 [162.00]	6.969 [177.00]	5.787 [147.00]

MOUNTING DIMENSIONS



HOW TO ORDER



- 1

▶

CONNECTOR SERIES *(Fixed)*

LSH
- 2

▶

NUMBER OF CONTACTS

1 2 3 4 5 6
- 3

▶

CONTACT GENDER

M MALE F FEMALE
- 4

▶

PLATING

TG 10µin GOLD (MIN) OVER NICKEL TH 50µin GOLD (MIN) OVER NICKEL

TAH 50µin GOLD (MIN) OVER NICKEL ON MATING SURFACE, GOLD FLASH OVER NICKEL ON TERMINATION

