

UTO Series

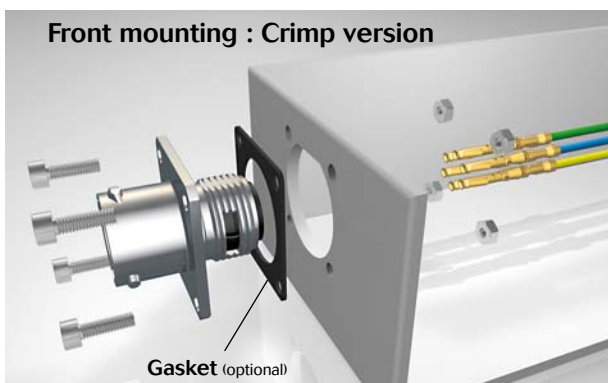
Technical information



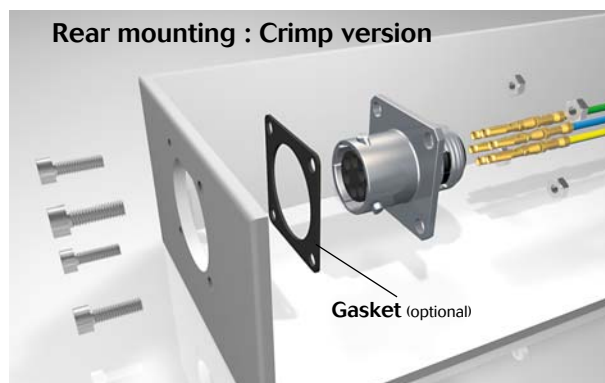
UTO 0 assembly (mounting suggestion)

- Strip wires, crimp
- Insert contacts into connector cavities (insert manually or use tool RTM205 crimp contacts)
- Place receptacle in the panel cut-out, with optional gasket
- Secure receptacle with screws (not supplied)

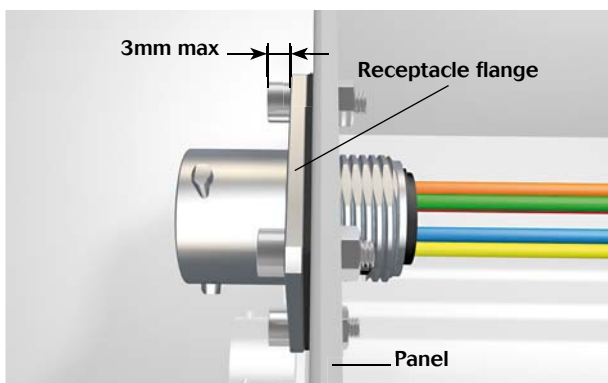
Front mounting : Crimp version



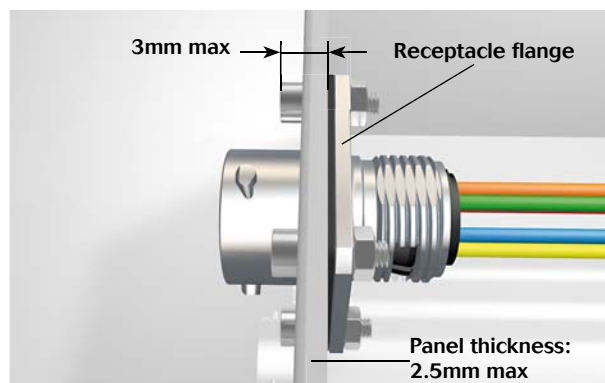
Rear mounting : Crimp version



3mm max



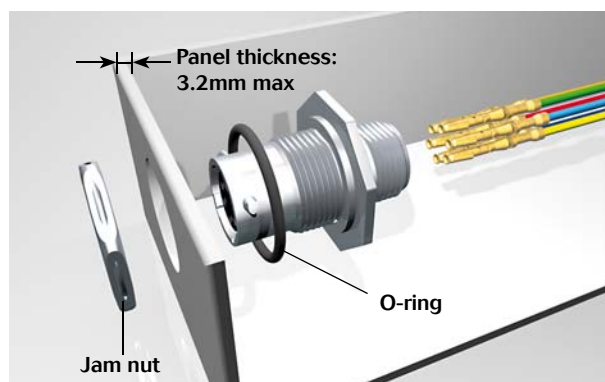
3mm max



UTO 7 assembly (mounting suggestion)

- Strip wires, crimp contacts
- Insert contacts into connector cavities (insert manually or use tool RTM205 crimp contacts)
- Seat o-ring, place receptacle in the panel cut-out
- Tighten jam nut

Shell size	Jam nut torque (Nm)	Tool tightening	Ø Wire	
			Standard version	Discrete wire sealing
10	3	22.25	3.2 mm max	from 1.7 mm to 3.0 mm



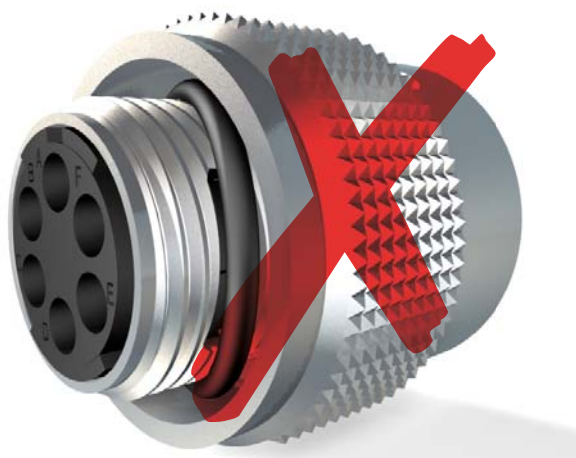
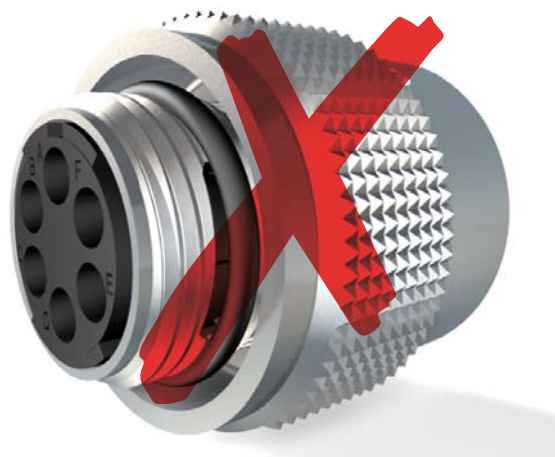
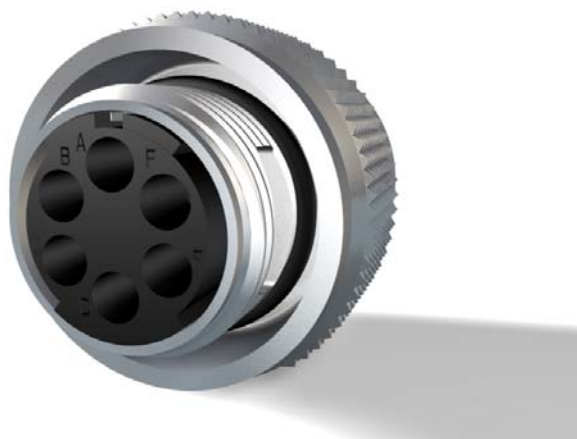
UTO Series

Technical information



UTO assembly verification

1st step : check seal position. If necessary, gently position the seal correctly with a non aggressive tool, as described.



Proceed assembling as described in following pages.

As a final control, check that the coupling ring turns freely.

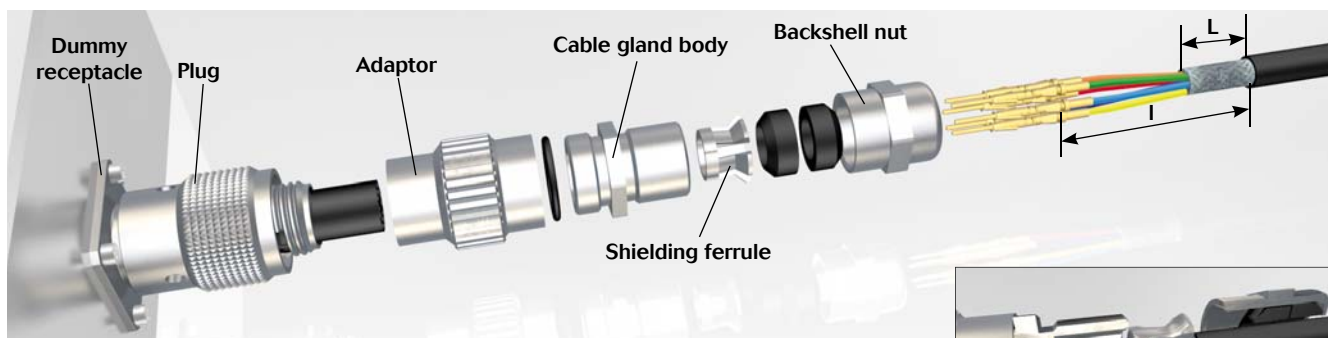


UTO Series

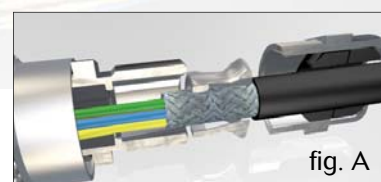
Technical information



UTOW6 106PH / UTOS10JCSL assembly: Crimp version



- Mated the plug with receptacle (dummy receptacle or receptacle without contact fixed on work station)
- Slide accessories on the cable
- Strip external cable jacket
- Strip wires and crimp contacts
- Insert contacts into connector cavities (insert manually or use tool RTM205)
- Screw adaptor with plug, screw cable gland body with adaptor, and tight them together with the plug mated on receptacle (recommended torque: 2.5 to 5 Nm)
- Place shielding ferrule over cable braid shield (see fig A) and slide the cable with ferrule in order to place the ferrule into the cable gland body (see fig.B)
- Tight backshell nut with cable gland body (recommended torque: 2 to 5 Nm, depending on the cable).



*Indicative torques, need to be adjusted depending on the cable used.

Part number	l min.	L min
UTOS10JCS	45 mm	10 mm
UTOS10JCSL	47 mm	12 mm

Extraction tools

Contact size	Extractor
#20	RX20D44
#16	RX2025GE1



RX2025GE1



RX20D44

Extraction tools instruction for size 16

Special case with the tool RX2025GE1:

A - When setting up in the cell, keep firmly the tool by the hexagonal metallic part and insert tool in cavity.

B - Push the tool by the handle to extract the contact.



Extraction:

Place the tool into the cavity from front face of the connector, push on the handle, then remove the contact..