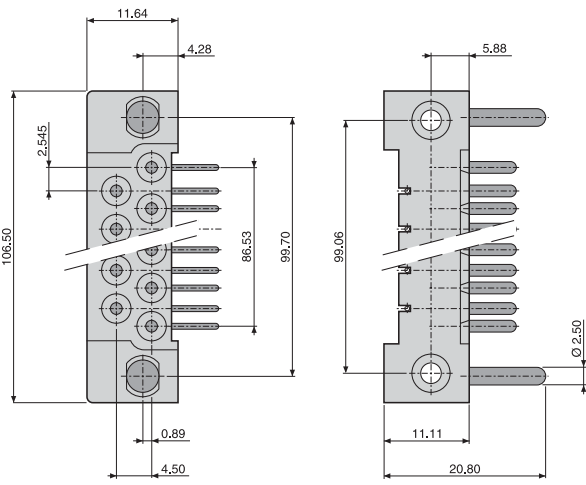
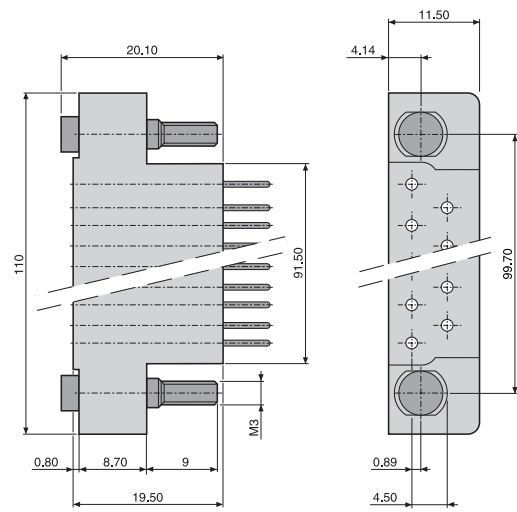


Plug and receptacle dimensions

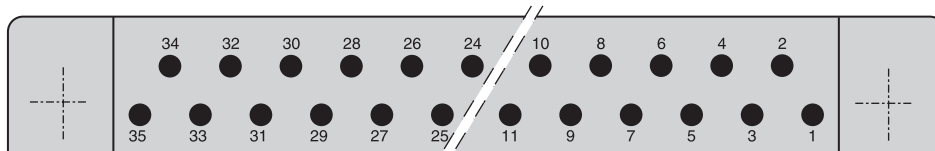
Plug



Receptacle



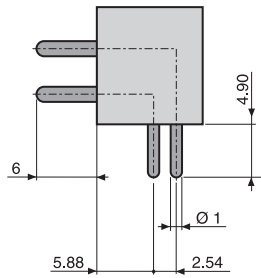
Contact layout



Wiring side view

Plug termination

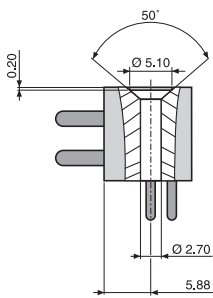
90° trough board



Ref: 10

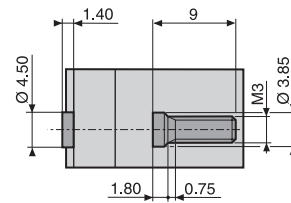
Mounting

Plug transverse



Ref: 110

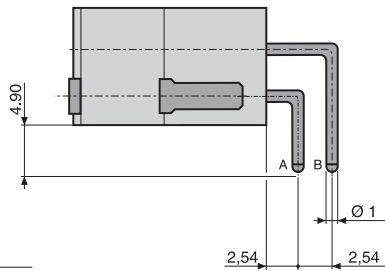
Receptacle axial



Ref: 121

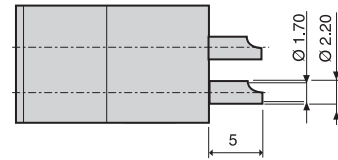
Receptacle terminations

90° termination



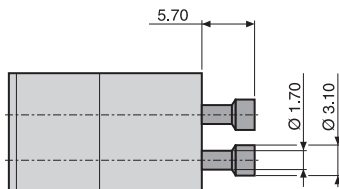
Ref: 10

Solder cup



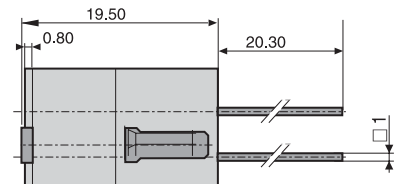
Ref: 40

To crimp



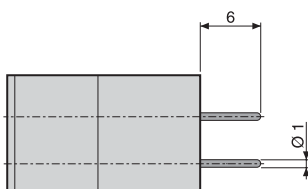
Ref: 20

Wire wrap (3 wraps)



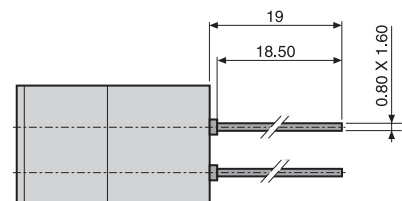
Ref: 56

Straight



Ref: 30

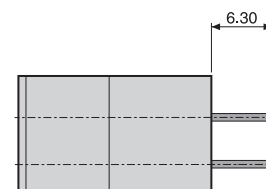
Post termination



Ref: 62

Terminations	Row	Contacts P/N
10	A	0150952-10RN1
	B	0150962-10RN1
20		0150372-20RN1
30		0150692-30RQ5
40		0150592-40RN1
56		0151122-56RN1
62		0150812-62RN1
91		0151542-91-RN7

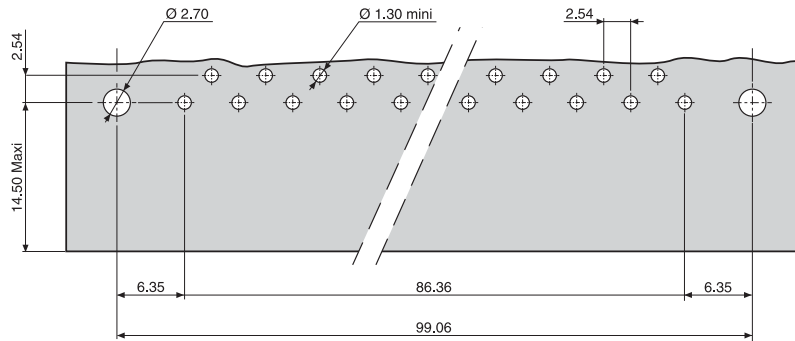
Saver



Ref: 91

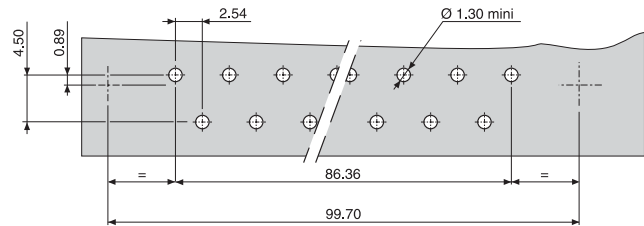
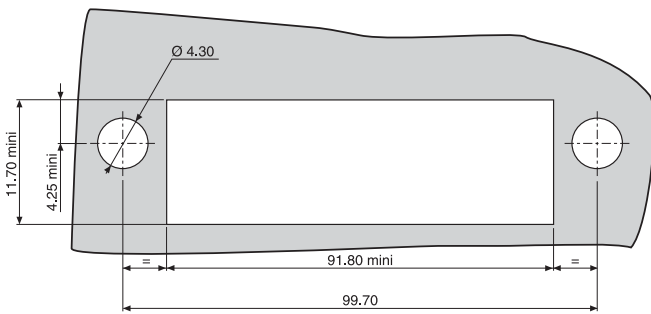
Board and panel preparation details

Daughter board



Panel

Mother board



PCB and panel connector wiring side view

Tooling

Tools	Suppliers	P/N
Crimp tools	ASTRO TOOL	TGV 101
	DANIELS	FT8
Turrets	ASTRO TOOL	TGV 201
	DANIELS	SH 462
Contact extraction tools	HYPERTAC	SD. 015 00 00 003