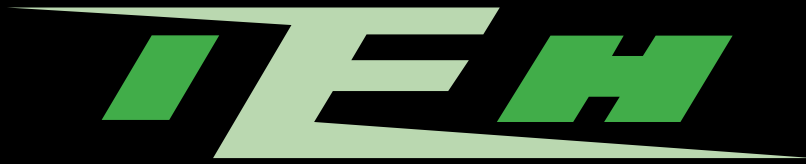


HMM .075 x .075 HYPERBOLOID SERIES

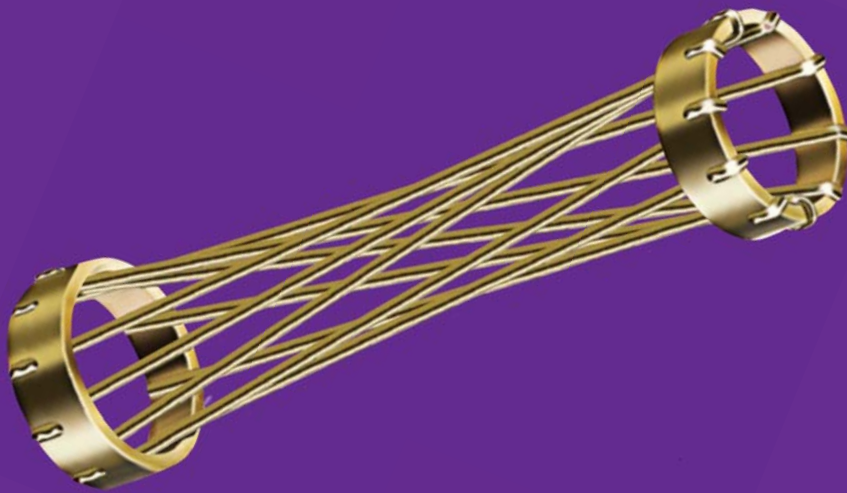


## HYPERBOLOID CONNECTORS

FOR SUPERIOR PERFORMANCE IN ALL APPLICATIONS

IEH CORPORATION ISO 9001:2000

SMALL BUSINESS-HUB-ZONE CERTIFIED



[www.iehcorp.com](http://www.iehcorp.com)

## **CONTENTS**

### **HMM SERIES - .075 X .075 CONNECTORS**

**PAGE**

- 3 Introduction
- 4 Specifications
  
- 5 Ordering Chart - 4 & 6 Row

---

#### **4 ROW UNINTERRUPTED**

- 6 FAE9, FVEA - Receptacle, Stacking
- 7 FBE, FDE, FSE, FWE - Receptacle, Straight (Flex Cable, Dip Solder, Solder Cup, Wire Wrap)
- 8 FEE - Receptacle, Right Angle (Dip Solder)
- 9 FVE - Receptacle, Compliant
- 10 MAE9, MVEA - Plug, Stacking
- 11 MBE, MDE, MSE - Plug, Straight (Flex Cable, Dip Solder, Solder Cup)
- 12 MVE - Plug, Compliant
- 13 RBE, RDE, RSE - Plug, Straight, Low Profile (Flex Cable, Dip Solder, Solder Cup)
- 14 MEE - Plug, Right Angle, Low Profile (Dip Solder)
- 15 MRE - Plug, Surface Mount, Low Profile

---

#### **4 ROW INTERRUPTED**

- 16 FAE9, FVEA - Receptacle, Stacking
- 17 FBE, FDE, FSE, FWE - Receptacle, Straight (Flex Cable, Dip Solder, Solder Cup, Wire Wrap)
- 18 FEE - Receptacle, Right Angle (Dip Solder)
- 19 FVE - Receptacle, Compliant
- 20 MAE9, MVEA - Plug, Stacking
- 21 MBE, MDE, MSE - Plug, Straight (Flex Cable, Dip Solder, Solder Cup)
- 22 MVE - Plug, Compliant
- 23 RBE, RDE, RSE - Plug, Straight, Low Profile (Flex Cable, Dip Solder, Solder Cup)
- 24 MEE - Plug, Right Angle, Low Profile (Dip Solder)
- 25 MRE - Plug, Surface Mount, Low Profile

---

#### **6 ROW INTERRUPTED**

- 26 FAE9, FVEA - Receptacle, Stacking
- 27 FBE, FDE, FSE, FWE - Receptacle, Straight (Flex Cable, Dip Solder, Solder Cup, Wire Wrap)
- 28 FEE - Receptacle, Right Angle (Dip Solder)
- 29 FVE - Receptacle, Compliant
- 30 MAE9, MVEA - Plug, Stacking
- 31 MBE, MDE, MSE - Plug, Straight (Flex Cable, Dip Solder, Solder Cup)
- 32 MVE - Plug, Compliant
- 33 RBE, RDE, RSE - Plug, Straight, Low Profile (Flex Cable, Dip Solder, Solder Cup)
- 34 MEE - Plug, Right Angle, Low Profile (Dip Solder)
- 35 MRE - Plug, Surface Mount, Low Profile

## CONTENTS

### HMM SERIES - .075 X .075 CONNECTORS

**PAGE**

36 Ordering Chart - 8 Row

---

**8 ROW UNINTERRUPTED**

---

- 37 FAE9, FVEA - Receptacle, Stacking
- 38 FBE, FDE, FSE, FWE - Receptacle, Straight (Flex Cable, Dip Solder, Solder Cup, Wire Wrap)
- 39 FVE - Receptacle, Compliant
- 40 MAE9, MVEA - Plug, Stacking
- 41 MBE, MDE, MSE, MWE - Plug, Straight (Flex Cable, Dip Solder, Solder Cup, Wire Wrap)
- 42 MVE - Plug, Compliant
- 43 MEE - Plug, Right Angle Dip Solder

---

**APPENDIX**

---

- 44 Application Notes - Style 'MRE'
- 45 Application Notes - Style 'MRE'
- 46 Termination Styles - Receptacle, 4 Row
- 47 Termination Styles - Plug, 4 Row
- 48 Termination Styles - Plug, Low Profile, 4 Row
- 49 Termination Styles - Receptacle, 6 Row
- 50 Termination Styles - Plug, 6 Row
- 51 Termination Styles - Plug, Low Profile, 6 Row
- 52 Termination Styles - Receptacle, 8 Row
- 53 Termination Styles - Plug, 8 Row
- 54 Hardware Styles - 4 & 6 Row
- 55 Hardware Styles - 8 Row
- 56 Polarization Chart - 4 & 6 Row
- 57 Polarization Chart - 8 Row
- 58 PWB Pattern - 4 Row Uninterrupted
- 59 PWB Pattern - 4 Row Interrupted
- 60 PWB Pattern - 6 Row Receptacle, Interrupted
- 61 PWB Pattern - 6 Row Plug, Interrupted
- 62 PWB Pattern - 8 Row Uninterrupted

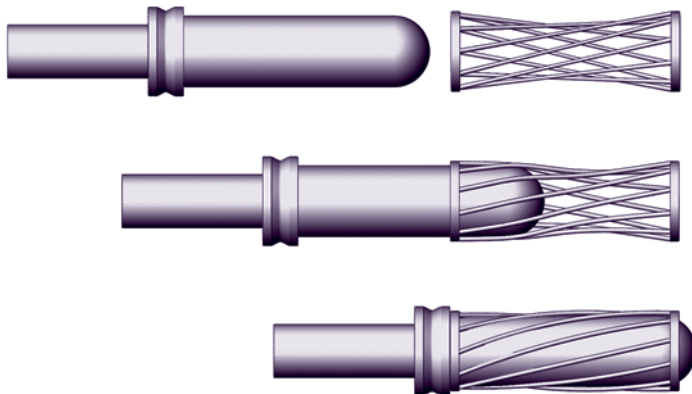
---

**SPECIALTY**

---

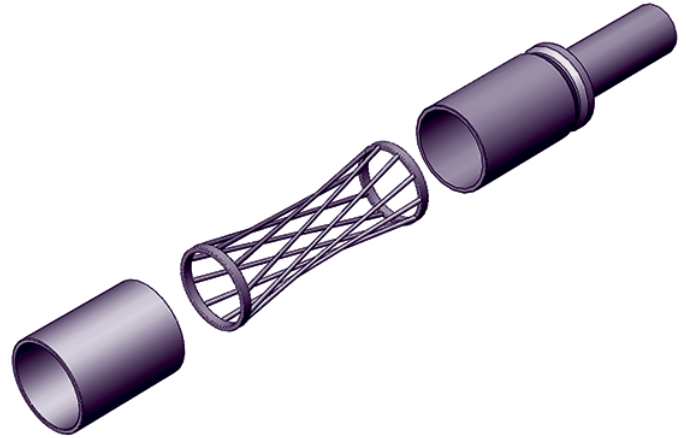
- 63 HMM117FEE...
- 64 HMM117MDE...

The HYPERBOLOID contact is an advanced design that satisfies performance requirements previously considered impossible. Radically different in concept, it is used in connectors having the highest standards of performance. The distinguishing feature of the HYPERBOLOID socket is the hyper-boloid-shaped sleeve formed by straight wires strung at an angle to the longitudinal axis. Viewed from the side, you see a curve defined by a series of apparent short straight line segments which are tangent lines to points along a hyperbolic curve. This geometry provides for a design which has a decreasing circumscribed circle when viewed from the entry. It begins larger than the pin acceptance diameter and is less than this same diameter at the center. When the pin is inserted into this sleeve, the wires stretch, well within elastic limits, to accommodate it. In so doing, the wires wrap themselves around the pin providing a number of continuous line contact paths. The illustration below will assist in visualization.



The actual physical construction of the contact involves several components. The wires are strung on an internal wire carrier (inner sleeve) which is subsequently capped or enclosed by a front outer ring (front sleeve) and rear ring which includes the termination configuration (terminal). All components to the assembly are completely finished with the specified electroplating prior to assembly. The wires are continuous process plated on reel before use. In this manner, interface finish requirements can be controlled very closely without the common problems of gradient, shadow, or other finish imperfections often appearing in alternative designs. Very often, this processing feature permits the specifier to reduce precious metal content with resultant savings. Joints are calculated interference fits, insuring gas tight interfaces between all elements of the HYPERBOLOID construction. An exploded view is provided next.

The unique geometry, precision processing, and careful attention to quality result in a highly desirable contact design which provides:



- **VLIF (Very Low Insertion Force):** Common sizes #22 and less average under one ounce per contact.
- **Extraordinary Resistance to Shock & Vibration:** Tests exceeding 300 g's without discontinuity.
- **Duty Cycle Exceeding 100,000 Mate/Demate:** The burnishing action of the wires on the pin surface is non-destructive. Unlike the "plow" and scrape action of common designs, HYPERBOLOID's gentle mating action enhances life.
- **Low, Low Contact Resistance:** The multiplicity of line contact, as opposed to point contact in other designs, provides an excellent interface exhibiting low contact resistance (often less than 1/2 of MIL spec. allowances). This characteristic also provides for a cooler running contact under load.
- **Improved Current Carrying Capacity:** The low contact resistance gives a lower °C rise from ambient under load. This feature often allows the user to operate the same size contact under higher load.
- **Highest Reliability:** In use for over 40 years under the most demanding conditions HYPERBOLOID has proven itself to be the leading design for integrity and reliability. On space platforms, ships and boats at sea, land vehicles, fighter and transport aircraft, missiles, torpedoes, medical and transplant electronics, industrial and environmental controls, rail, construction, ATE and test equipment, PGA sockets, test interface stations, and other applications, HYPERBOLOID has lived up to its promise of the highest reliability connector available.

## SPECIFICATIONS

### MATERIALS:

Pin Contacts:	PhBr per ASTM B139, BeCu per ASTM B196 or B197, or Cu alloy
Socket Contacts:	
Contact Wires:	BeCu per ASTM B196, or B197
Termination:	PhBr per ASTM B139 or Cu alloy
Support Elements:	Cu alloy
SMT Leads:	PhBr per ASTM B139
Hardware:	Corrosion resistant steel per ASTM A582 ('D' shaped guide receptacles are BeCu per ASTM B196 or B197) or Cu alloy
Insulator:	Modified polyphenylene sulfide per MIL-M-24519, Type GST-40F
Pin Shields:	Aluminum 5052-H32 per QQ-A-250/8

### FINISHES:

Pin Contacts:	Gold per ASTM B488 Type II, Class 1.27, Code C over Nickel, 0.000050 min., per MIL-DTL-55302 over Copper per SAE AMS 2418 or ASTM B734
Socket Contacts:	
Contact Wires:	Gold per ASTM B488 Type II, Class 1.27, Code C over Nickel, 0.000050 min., per MIL-DTL-55302 over Copper per SAE AMS 2418 or ASTM B734
Termination:	Gold per ASTM B488, Class 0.50, Grade C over Nickel, 0.000050 min., per MIL-DTL-55302 over Copper per SAE AMS 2418 or ASTM B734 or solder dip over Nickel, 0.000050 min., per MIL-DTL-55302 over Copper per SAE AMS 2418 or ASTM B734
Support Elements:	Nickel, 0.000050 min., over Copper per SAE AMS 2418 or ASTM B734
SMT Leads:	Tin/Lead per SAE-AMS-P-81728
Hardware:	Passivate per SAE-AMS2700 except BeCu hardware to be Nickel plate, 0.000050 min.
Pin Shields:	Black Anodize per MIL-A-8625, Type II, Class 2

### PERFORMANCE:

Current Rating:	3* amp continuous (higher ratings may be supported-contact factory)
Insulation Resistance:	5000 megaohms min. – EIA-364-21 & MIL-DTL-55302 (par. 4.5.8)
Contact Resistance:	5 milliohms max, - EIA-364-06 & MIL-DTL-55302 (par. 4.5.5)
Test Voltage (DWV):	750 VAC RMS @ sea level - EIA-364-20 & MIL-DTL-55302 (par. 4.5.7.1) 250 VAC RMS @ 70,000 ft.
Temperature:	-65°C to +125°C (-86°F to +257°F)
Mating Force:	0.15 lbs. x number of contacts, max. - MIL-STD-55302 (par. 4.5.4)
De-mating Force:	0.03 lbs. x number of contacts, min. - MIL-STD-55302 (par. 4.5.4)
Contact Life:	100,000 mating cycles – Exceeds MIL-DTL-55302 (par. 4.5.9)
Solderability:	IPC/EIA J-STD-002, Category 3
Humidity:	IAW EIA-364-31, Method IV, except 7A & 7B (not required)
Vibration:	IAW EIA-364-28 & MIL-DTL-55302 (par. 4.5.10)
Shock:	IAW EIA-364-27 & MIL-DTL-55302 (par. 4.5.14)
Salt Spray:	IAW EIA-364-26 & MIL-DTL-55302 (par. 4.5.11)
Temperature Cycling:	IAW EIA-364-32 & MIL-DTL-55302 (par. 4.5.13)

### DIMENSIONS:

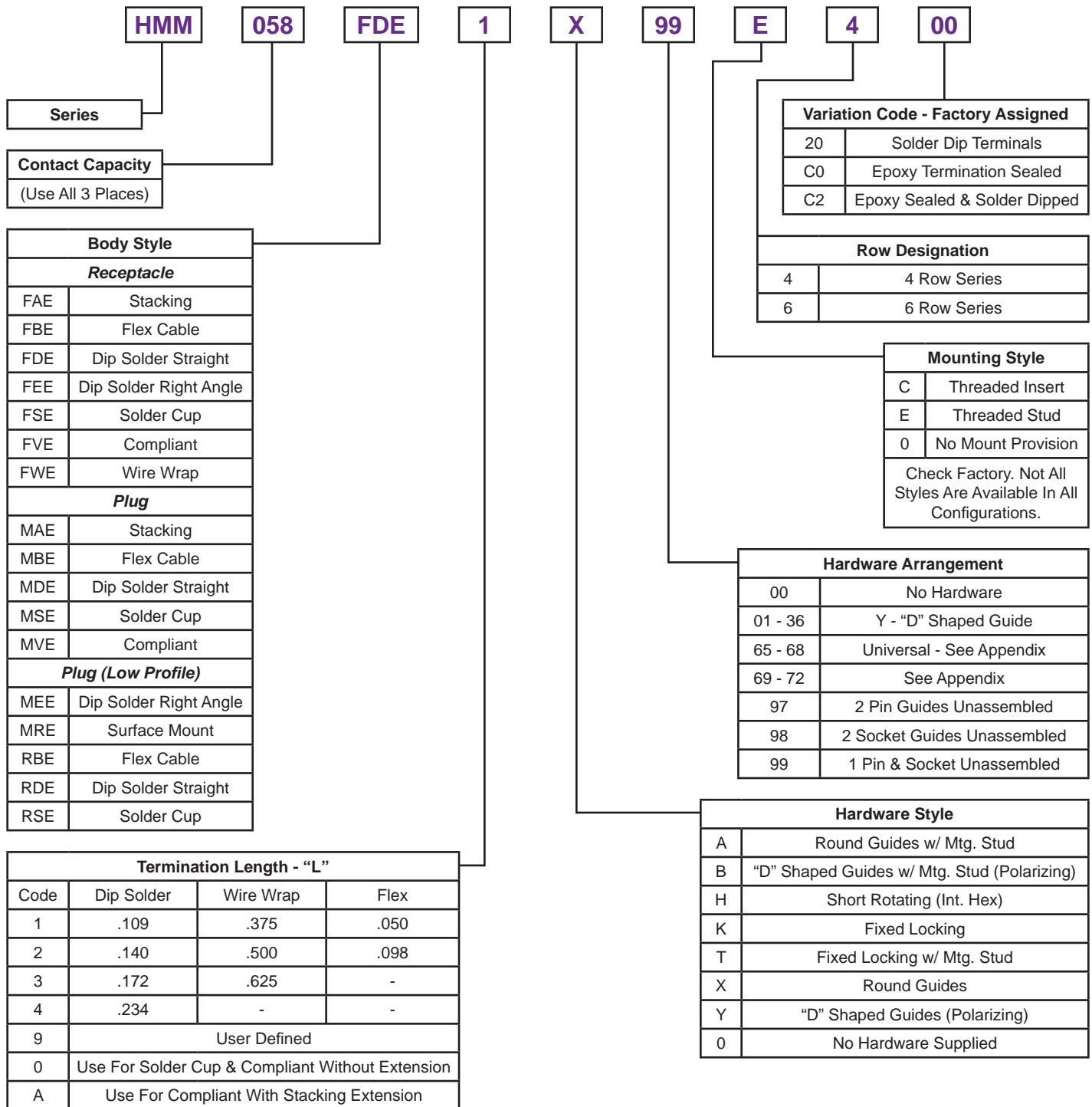
Catalog product dimensions are nominal.  
For linear and positional tolerances, contact factory.

\* Ampacity ratings shown are derated in accordance with the published military specifications. For stand-alone, full service ratings, supported by test data, please refer to IEH's Contacts Catalog, or contact the factory.

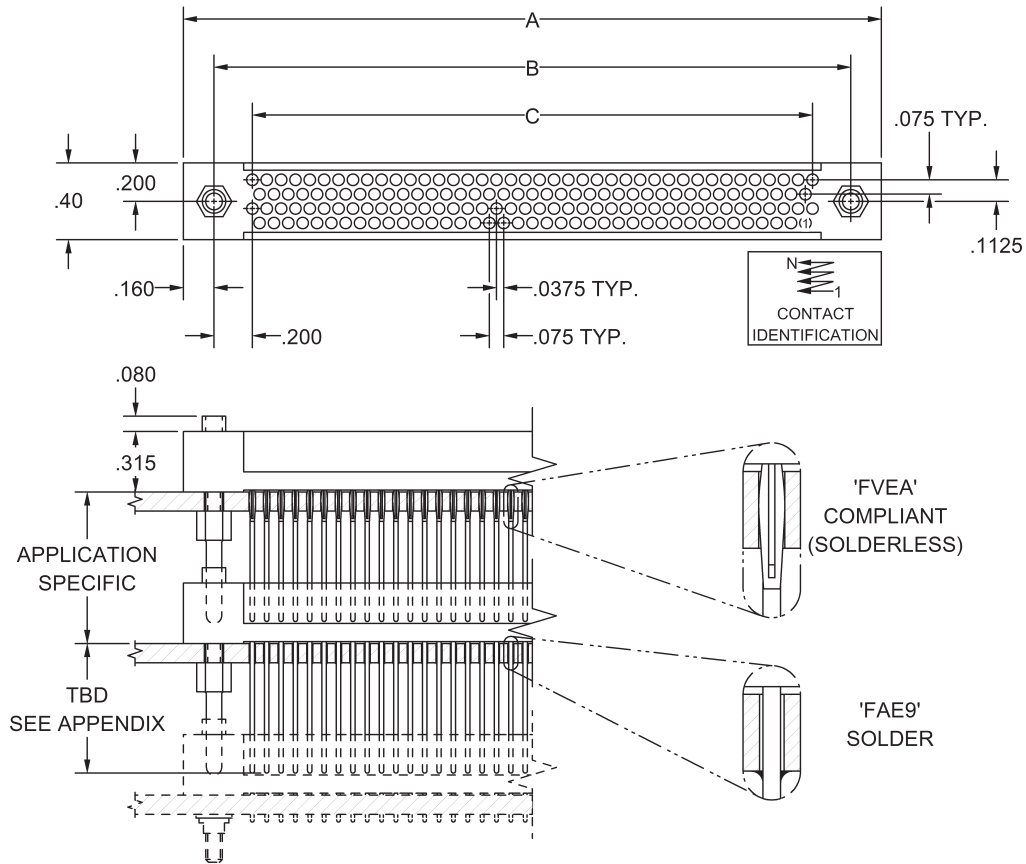
All information contained herein is believed to be reliable as of the date of publication, but is subject to change without notice. Current product drawings and specifications are available upon request from IEH.

IEH warrants its products to be free of defects affecting normal use. If any shipment is found to be defective we will accept return for repair or replacement at our option within one year of shipment. IEH is not responsible for incidental or consequential damages arising out of the use of our products.

## ORDERING CHART 4 & 6-ROW



RECEPTACLE, STACKING  
STYLE FAE9, FVEA

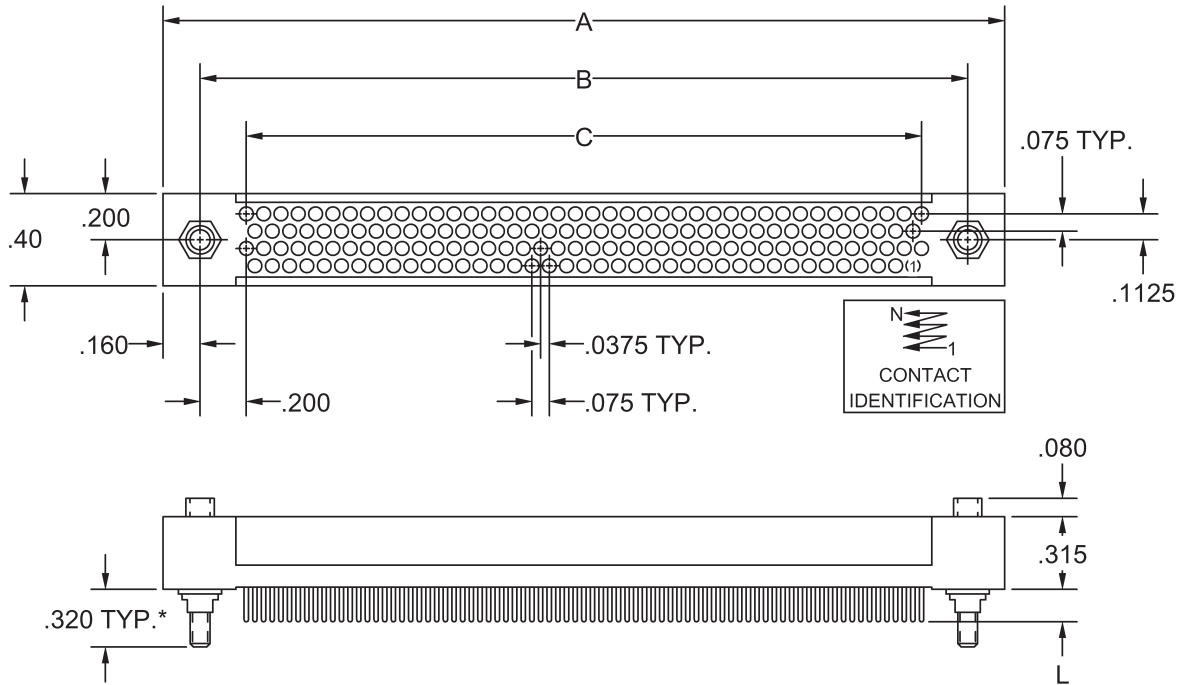


SIZE	A	B	C
058	1.770	1.450	1.050
062	1.845	1.525	1.125
066	1.920	1.600	1.200
070	1.995	1.675	1.275
074	2.070	1.750	1.350
078	2.145	1.825	1.425
082	2.220	1.900	1.500
086	2.295	1.975	1.575
090	2.370	2.050	1.650
094	2.445	2.125	1.725
098	2.520	2.200	1.800
102	2.595	2.275	1.875
106	2.670	2.350	1.950

SIZE	A	B	C
110	2.745	2.425	2.025
114	2.820	2.500	2.100
118	2.895	2.575	2.175
122	2.970	2.650	2.250
126	3.045	2.725	2.325
130	3.120	2.800	2.400
134	3.195	2.875	2.475
138	3.270	2.950	2.550
142	3.345	3.025	2.625
146	3.420	3.100	2.700
150	3.495	3.175	2.775
154	3.570	3.250	2.850
158	3.645	3.325	2.925

REFER TO APPENDIX FOR TERMINATION  
DETAILS, HARDWARE STYLES, POLAR-  
IZATION CHART, AND PWB PATTERNS

RECEPTACLE, STRAIGHT  
STYLE FBE, FDE, FSE, FWE



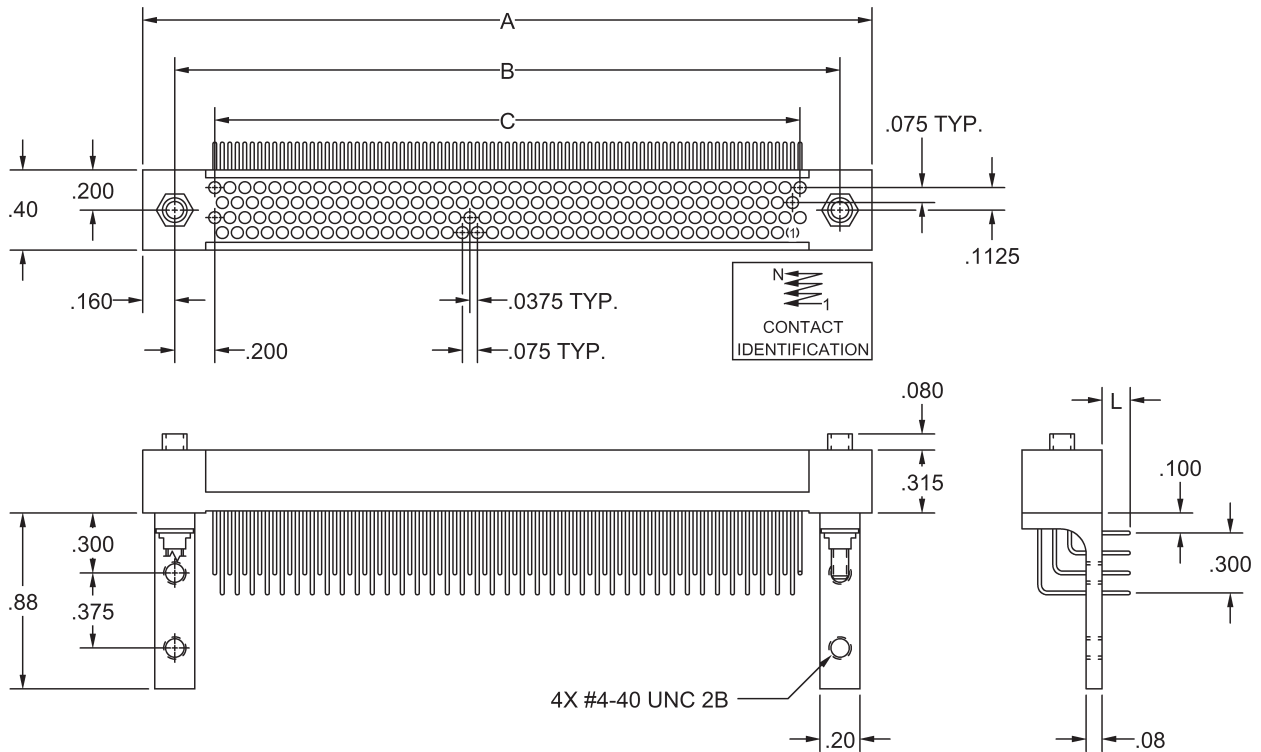
SIZE	A	B	C
058	1.770	1.450	1.050
062	1.845	1.525	1.125
066	1.920	1.600	1.200
070	1.995	1.675	1.275
074	2.070	1.750	1.350
078	2.145	1.825	1.425
082	2.220	1.900	1.500
086	2.295	1.975	1.575
090	2.370	2.050	1.650
094	2.445	2.125	1.725
098	2.520	2.200	1.800
102	2.595	2.275	1.875
106	2.670	2.350	1.950

SIZE	A	B	C
110	2.745	2.425	2.025
114	2.820	2.500	2.100
118	2.895	2.575	2.175
122	2.970	2.650	2.250
126	3.045	2.725	2.325
130	3.120	2.800	2.400
134	3.195	2.875	2.475
138	3.270	2.950	2.550
142	3.345	3.025	2.625
146	3.420	3.100	2.700
150	3.495	3.175	2.775
154	3.570	3.250	2.850
158	3.645	3.325	2.925

**\*REFER TO APPENDIX FOR TERMINATION  
DETAILS, HARDWARE STYLES, POLAR-  
IZATION CHART, AND PWB PATTERNS**



RECEPTACLE, RIGHT ANGLE  
STYLE FEE

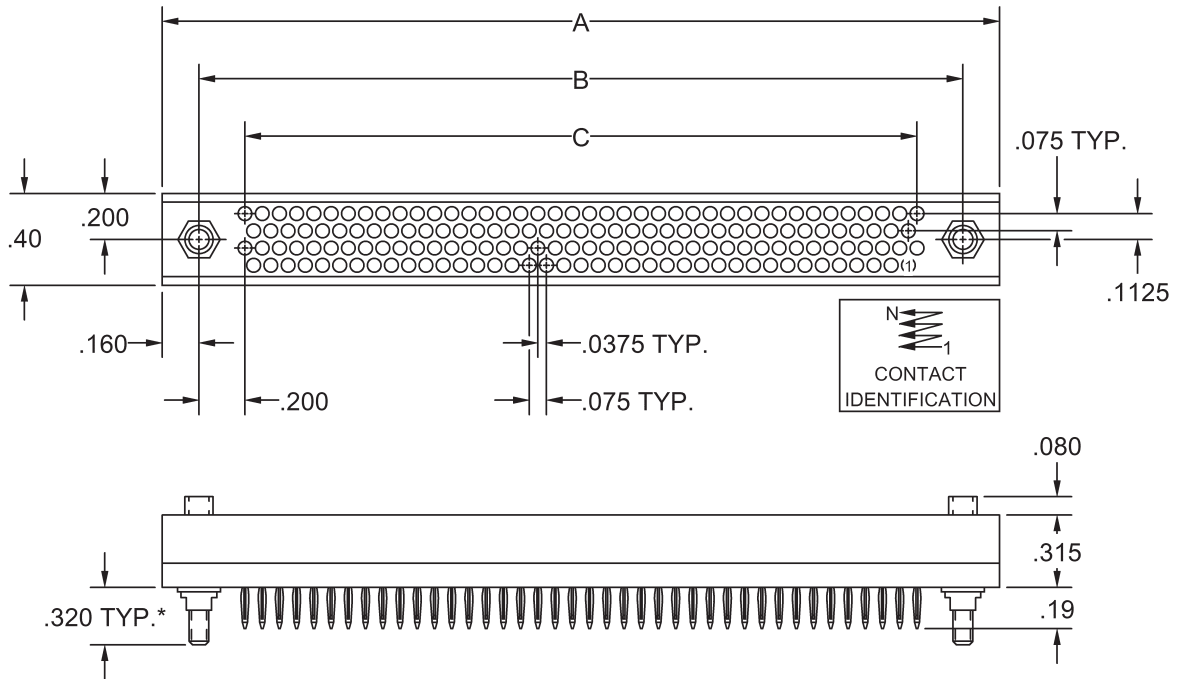


SIZE	A	B	C
058	1.770	1.450	1.050
062	1.845	1.525	1.125
066	1.920	1.600	1.200
070	1.995	1.675	1.275
074	2.070	1.750	1.350
078	2.145	1.825	1.425
082	2.220	1.900	1.500
086	2.295	1.975	1.575
090	2.370	2.050	1.650
094	2.445	2.125	1.725
098	2.520	2.200	1.800
102	2.595	2.275	1.875
106	2.670	2.350	1.950

SIZE	A	B	C
110	2.745	2.425	2.025
114	2.820	2.500	2.100
118	2.895	2.575	2.175
122	2.970	2.650	2.250
126	3.045	2.725	2.325
130	3.120	2.800	2.400
134	3.195	2.875	2.475
138	3.270	2.950	2.550
142	3.345	3.025	2.625
146	3.420	3.100	2.700
150	3.495	3.175	2.775
154	3.570	3.250	2.850
158	3.645	3.325	2.925

REFER TO APPENDIX FOR TERMINATION  
DETAILS, HARDWARE STYLES, POLAR-  
IZATION CHART, AND PWB PATTERNS

RECEPTACLE, COMPLIANT  
STYLE FVE

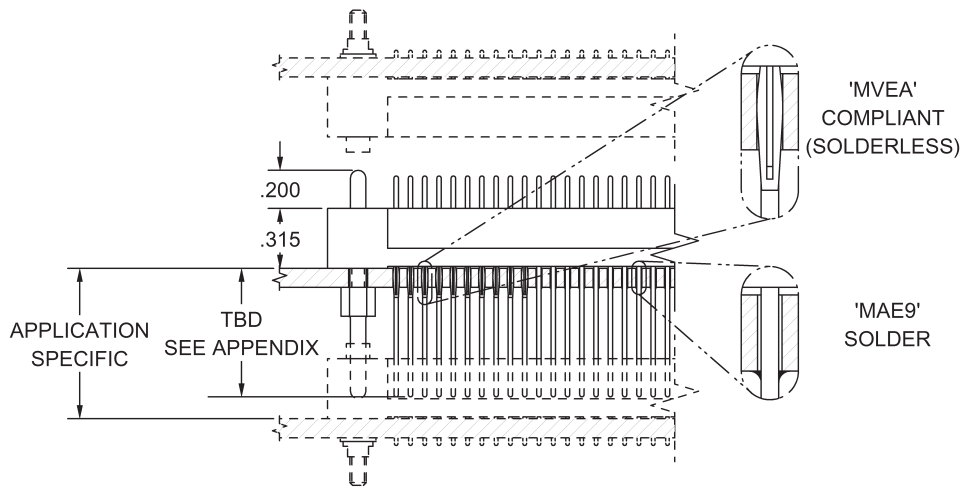
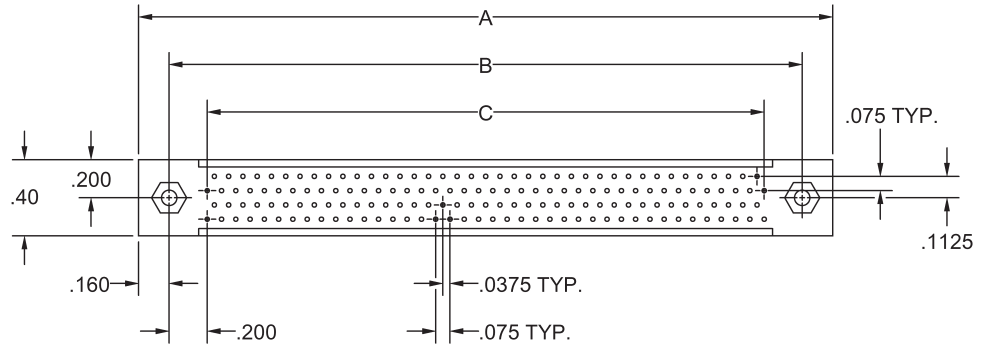


SIZE	A	B	C
058	1.770	1.450	1.050
062	1.845	1.525	1.125
066	1.920	1.600	1.200
070	1.995	1.675	1.275
074	2.070	1.750	1.350
078	2.145	1.825	1.425
082	2.220	1.900	1.500
086	2.295	1.975	1.575
090	2.370	2.050	1.650
094	2.445	2.125	1.725
098	2.520	2.200	1.800
102	2.595	2.275	1.875
106	2.670	2.350	1.950

SIZE	A	B	C
110	2.745	2.425	2.025
114	2.820	2.500	2.100
118	2.895	2.575	2.175
122	2.970	2.650	2.250
126	3.045	2.725	2.325
130	3.120	2.800	2.400
134	3.195	2.875	2.475
138	3.270	2.950	2.550
142	3.345	3.025	2.625
146	3.420	3.100	2.700
150	3.495	3.175	2.775
154	3.570	3.250	2.850
158	3.645	3.325	2.925

**\*REFER TO APPENDIX FOR TERMINATION  
DETAILS, HARDWARE STYLES, POLAR-  
IZATION CHART, AND PWB PATTERNS**

**PLUG, STACKING  
STYLE MAE9, MVEA**

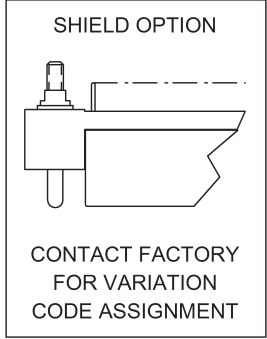
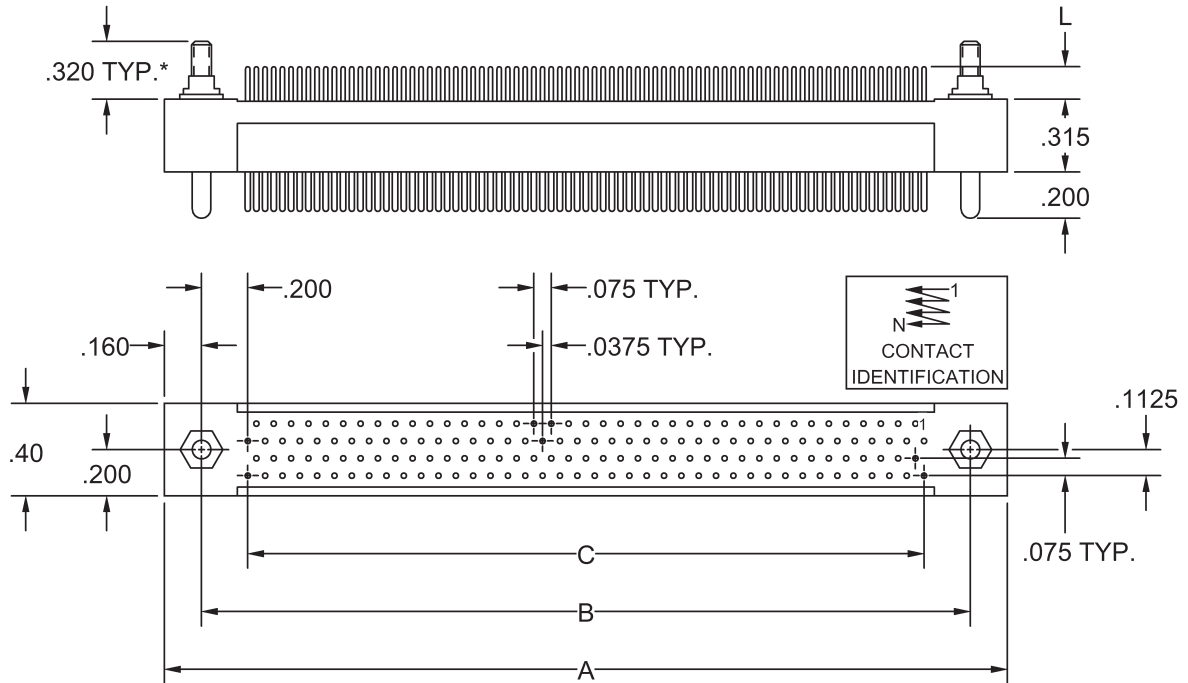


SIZE	A	B	C
058	1.770	1.450	1.050
062	1.845	1.525	1.125
066	1.920	1.600	1.200
070	1.995	1.675	1.275
074	2.070	1.750	1.350
078	2.145	1.825	1.425
082	2.220	1.900	1.500
086	2.295	1.975	1.575
090	2.370	2.050	1.650
094	2.445	2.125	1.725
098	2.520	2.200	1.800
102	2.595	2.275	1.875
106	2.670	2.350	1.950

SIZE	A	B	C
110	2.745	2.425	2.025
114	2.820	2.500	2.100
118	2.895	2.575	2.175
122	2.970	2.650	2.250
126	3.045	2.725	2.325
130	3.120	2.800	2.400
134	3.195	2.875	2.475
138	3.270	2.950	2.550
142	3.345	3.025	2.625
146	3.420	3.100	2.700
150	3.495	3.175	2.775
154	3.570	3.250	2.850
158	3.645	3.325	2.925

**REFER TO APPENDIX FOR TERMINATION  
DETAILS, HARDWARE STYLES, POLAR-  
IZATION CHART, AND PWB PATTERNS**

**PLUG, STRAIGHT  
STYLE MBE, MDE, MSE**

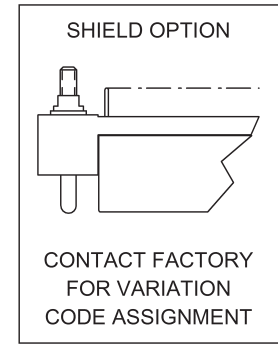
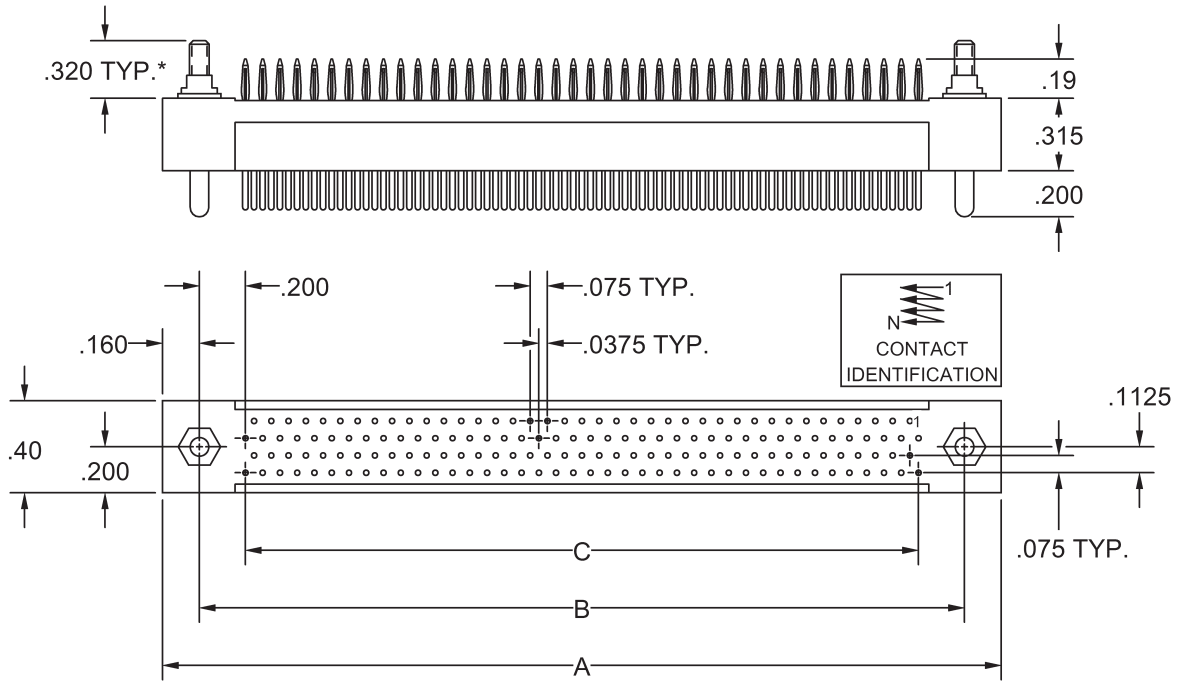


SIZE	A	B	C
058	1.770	1.450	1.050
062	1.845	1.525	1.125
066	1.920	1.600	1.200
070	1.995	1.675	1.275
074	2.070	1.750	1.350
078	2.145	1.825	1.425
082	2.220	1.900	1.500
086	2.295	1.975	1.575
090	2.370	2.050	1.650
094	2.445	2.125	1.725
098	2.520	2.200	1.800
102	2.595	2.275	1.875
106	2.670	2.350	1.950

SIZE	A	B	C
110	2.745	2.425	2.025
114	2.820	2.500	2.100
118	2.895	2.575	2.175
122	2.970	2.650	2.250
126	3.045	2.725	2.325
130	3.120	2.800	2.400
134	3.195	2.875	2.475
138	3.270	2.950	2.550
142	3.345	3.025	2.625
146	3.420	3.100	2.700
150	3.495	3.175	2.775
154	3.570	3.250	2.850
158	3.645	3.325	2.925

**\*REFER TO APPENDIX FOR TERMINATION  
DETAILS, HARDWARE STYLES, POLAR-  
IZATION CHART, AND PWB PATTERNS**

**PLUG, COMPLIANT  
STYLE MVE**

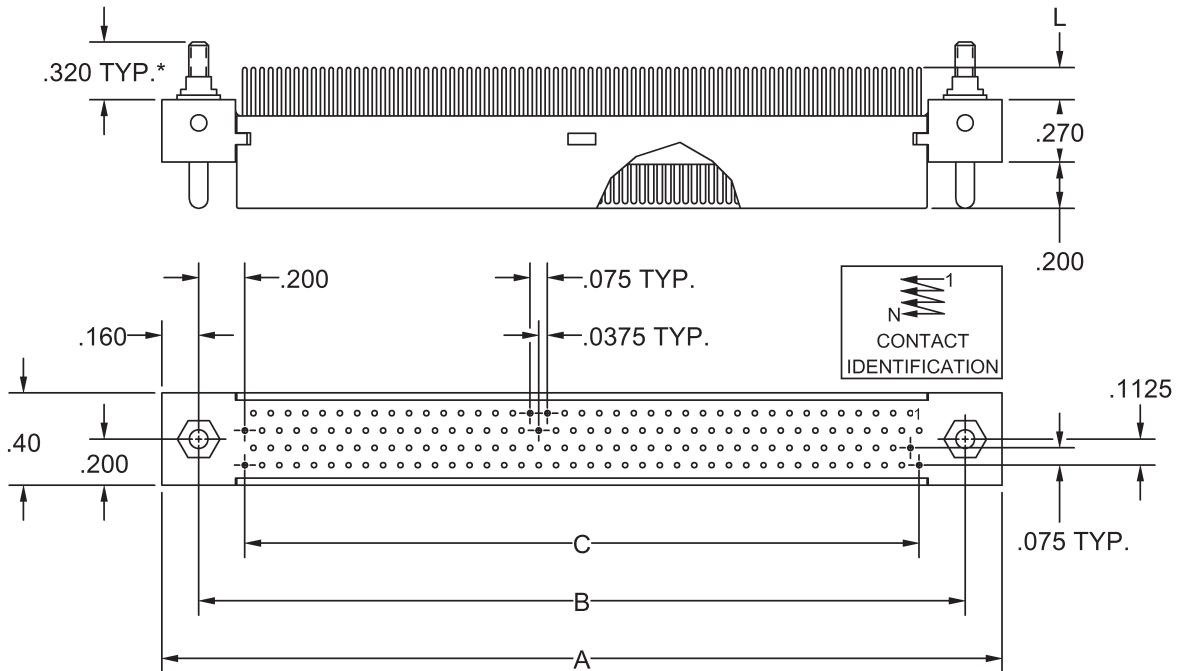


SIZE	A	B	C
058	1.770	1.450	1.050
062	1.845	1.525	1.125
066	1.920	1.600	1.200
070	1.995	1.675	1.275
074	2.070	1.750	1.350
078	2.145	1.825	1.425
082	2.220	1.900	1.500
086	2.295	1.975	1.575
090	2.370	2.050	1.650
094	2.445	2.125	1.725
098	2.520	2.200	1.800
102	2.595	2.275	1.875
106	2.670	2.350	1.950

SIZE	A	B	C
110	2.745	2.425	2.025
114	2.820	2.500	2.100
118	2.895	2.575	2.175
122	2.970	2.650	2.250
126	3.045	2.725	2.325
130	3.120	2.800	2.400
134	3.195	2.875	2.475
138	3.270	2.950	2.550
142	3.345	3.025	2.625
146	3.420	3.100	2.700
150	3.495	3.175	2.775
154	3.570	3.250	2.850
158	3.645	3.325	2.925

**\*REFER TO APPENDIX FOR TERMINATION  
DETAILS, HARDWARE STYLES, POLAR-  
IZATION CHART, AND PWB PATTERNS**

**PLUG, STRAIGHT, LOW PROFILE  
STYLE RBE, RDE, RSE**

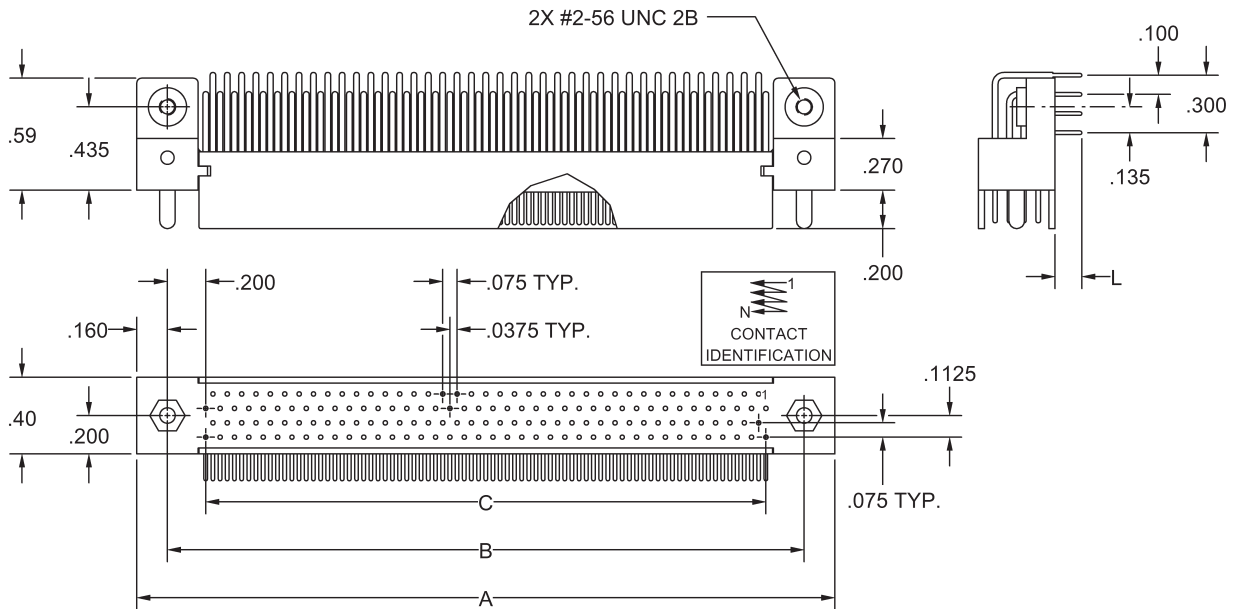


SIZE	A	B	C
058	1.770	1.450	1.050
062	1.845	1.525	1.125
066	1.920	1.600	1.200
070	1.995	1.675	1.275
074	2.070	1.750	1.350
078	2.145	1.825	1.425
082	2.220	1.900	1.500
086	2.295	1.975	1.575
090	2.370	2.050	1.650
094	2.445	2.125	1.725
098	2.520	2.200	1.800
102	2.595	2.275	1.875
106	2.670	2.350	1.950

SIZE	A	B	C
110	2.745	2.425	2.025
114	2.820	2.500	2.100
118	2.895	2.575	2.175
122	2.970	2.650	2.250
126	3.045	2.725	2.325
130	3.120	2.800	2.400
134	3.195	2.875	2.475
138	3.270	2.950	2.550
142	3.345	3.025	2.625
146	3.420	3.100	2.700
150	3.495	3.175	2.775
154	3.570	3.250	2.850
158	3.645	3.325	2.925

**\*REFER TO APPENDIX FOR TERMINATION  
DETAILS, HARDWARE STYLES, POLAR-  
IZATION CHART, AND PWB PATTERNS**

**PLUG, RIGHT ANGLE, LOW PROFILE  
STYLE MEE**

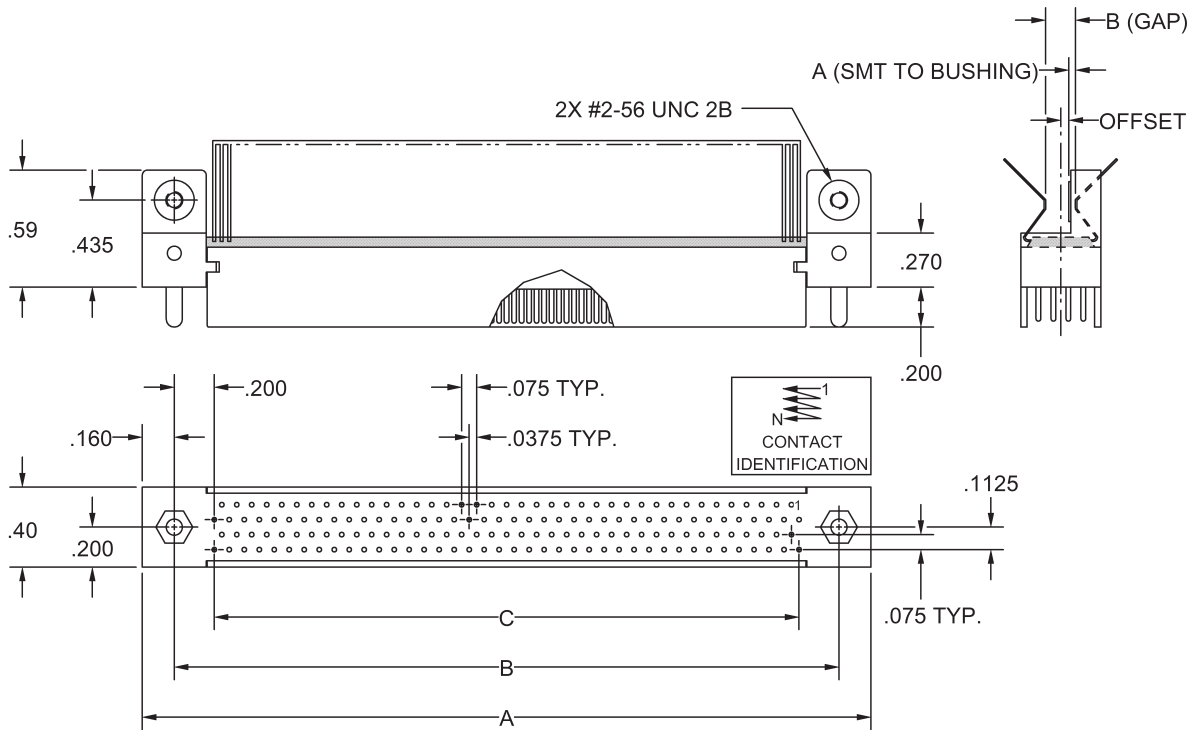


SIZE	A	B	C
058	1.770	1.450	1.050
062	1.845	1.525	1.125
066	1.920	1.600	1.200
070	1.995	1.675	1.275
074	2.070	1.750	1.350
078	2.145	1.825	1.425
082	2.220	1.900	1.500
086	2.295	1.975	1.575
090	2.370	2.050	1.650
094	2.445	2.125	1.725
098	2.520	2.200	1.800
102	2.595	2.275	1.875
106	2.670	2.350	1.950

SIZE	A	B	C
110	2.745	2.425	2.025
114	2.820	2.500	2.100
118	2.895	2.575	2.175
122	2.970	2.650	2.250
126	3.045	2.725	2.325
130	3.120	2.800	2.400
134	3.195	2.875	2.475
138	3.270	2.950	2.550
142	3.345	3.025	2.625
146	3.420	3.100	2.700
150	3.495	3.175	2.775
154	3.570	3.250	2.850
158	3.645	3.325	2.925

**REFER TO APPENDIX FOR TERMINATION  
DETAILS, HARDWARE STYLES, POLARIZATION  
CHART, AND PWB PATTERNS**

**PLUG, SURFACE MOUNT, LOW PROFILE  
STYLE MRE**



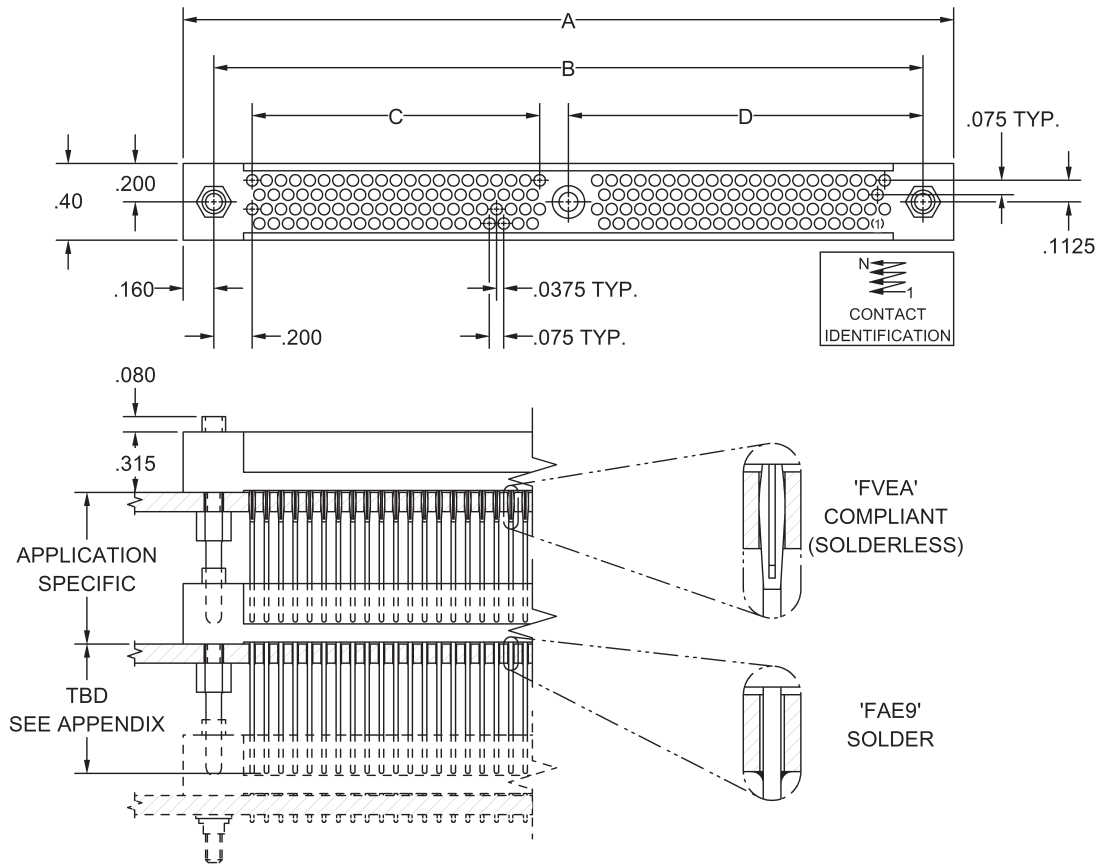
SIZE	A	B	C
058	1.770	1.450	1.050
062	1.845	1.525	1.125
066	1.920	1.600	1.200
070	1.995	1.675	1.275
074	2.070	1.750	1.350
078	2.145	1.825	1.425
082	2.220	1.900	1.500
086	2.295	1.975	1.575
090	2.370	2.050	1.650
094	2.445	2.125	1.725
098	2.520	2.200	1.800
102	2.595	2.275	1.875
106	2.670	2.350	1.950

SIZE	A	B	C
110	2.745	2.425	2.025
114	2.820	2.500	2.100
118	2.895	2.575	2.175
122	2.970	2.650	2.250
126	3.045	2.725	2.325
130	3.120	2.800	2.400
134	3.195	2.875	2.475
138	3.270	2.950	2.550
142	3.345	3.025	2.625
146	3.420	3.100	2.700
150	3.495	3.175	2.775
154	3.570	3.250	2.850
158	3.645	3.325	2.925

**REFER TO APPENDIX FOR TERMINATION  
DETAILS, HARDWARE STYLES, POLAR-  
IZATION CHART, AND PWB PATTERNS**



RECEPTACLE, STACKING  
STYLE FAE9, FVEA

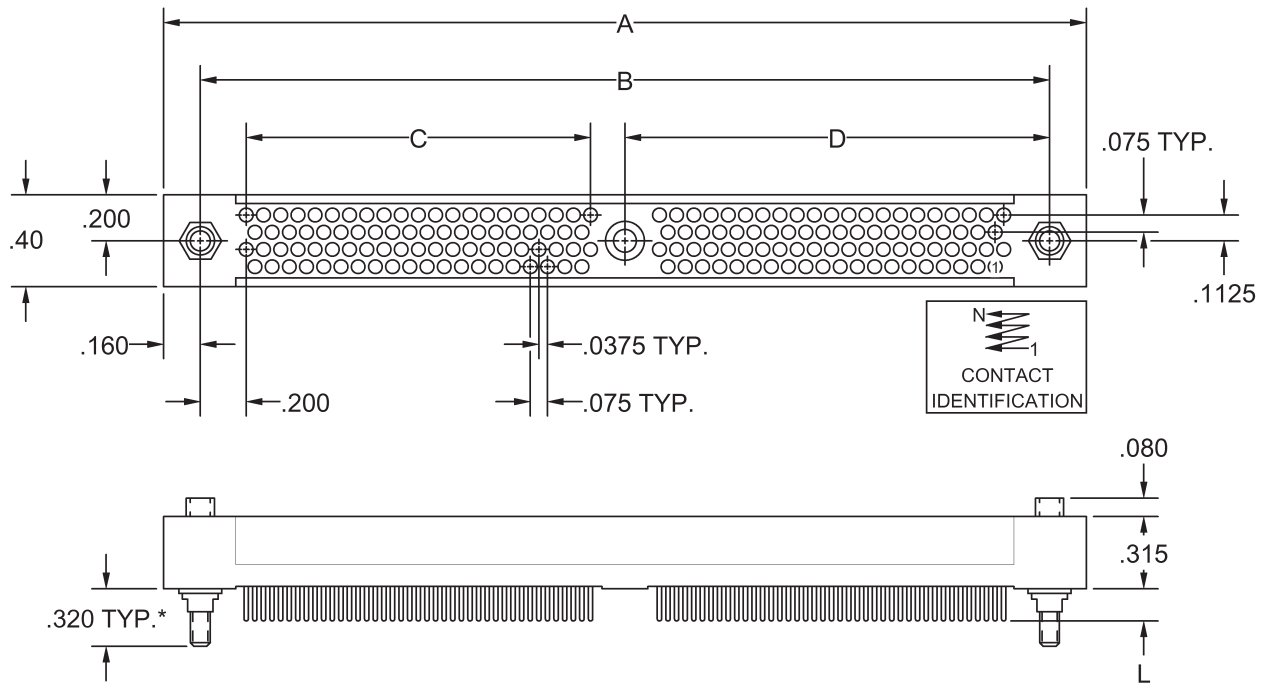


SIZE	A	B	C	D
164	4.020	3.700	1.500	1.850
172	4.170	3.850	1.575	1.925
180	4.320	4.000	1.650	2.000
188	4.470	4.150	1.725	2.075
196	4.620	4.300	1.800	2.150
204	4.770	4.450	1.875	2.225
212	4.920	4.600	1.950	2.300
220	5.070	4.750	2.025	2.375
228	5.220	4.900	2.100	2.450
236	5.370	5.050	2.175	2.525
244	5.520	5.200	2.250	2.600
252	5.670	5.350	2.325	2.675
260	5.820	5.500	2.400	2.750
268	5.970	5.650	2.475	2.825
276	6.120	5.800	2.550	2.900
284	6.270	5.950	2.625	2.975

SIZE	A	B	C	D
292	6.420	6.100	2.700	3.050
300	6.570	6.250	2.775	3.125
308	6.720	6.400	2.850	3.200
316	6.870	6.550	2.925	3.275
324	7.020	6.700	3.000	3.350
332	7.170	6.850	3.075	3.425
340	7.320	7.000	3.150	3.500
348	7.470	7.150	3.225	3.575
356	7.620	7.300	3.300	3.650
364	7.770	7.450	3.375	3.725
372	7.920	7.600	3.450	3.800
380	8.070	7.750	3.525	3.875
388	8.220	7.900	3.600	3.950
396	8.370	8.050	3.675	4.025
404	8.520	8.200	3.750	4.100

REFER TO APPENDIX FOR  
TERMINATION DETAILS,  
HARDWARE STYLES, PO-  
LARIZATION CHART, AND  
PWB PATTERNS

**RECEPTACLE, STRAIGHT  
STYLE FBE, FDE, FSE, FWE**

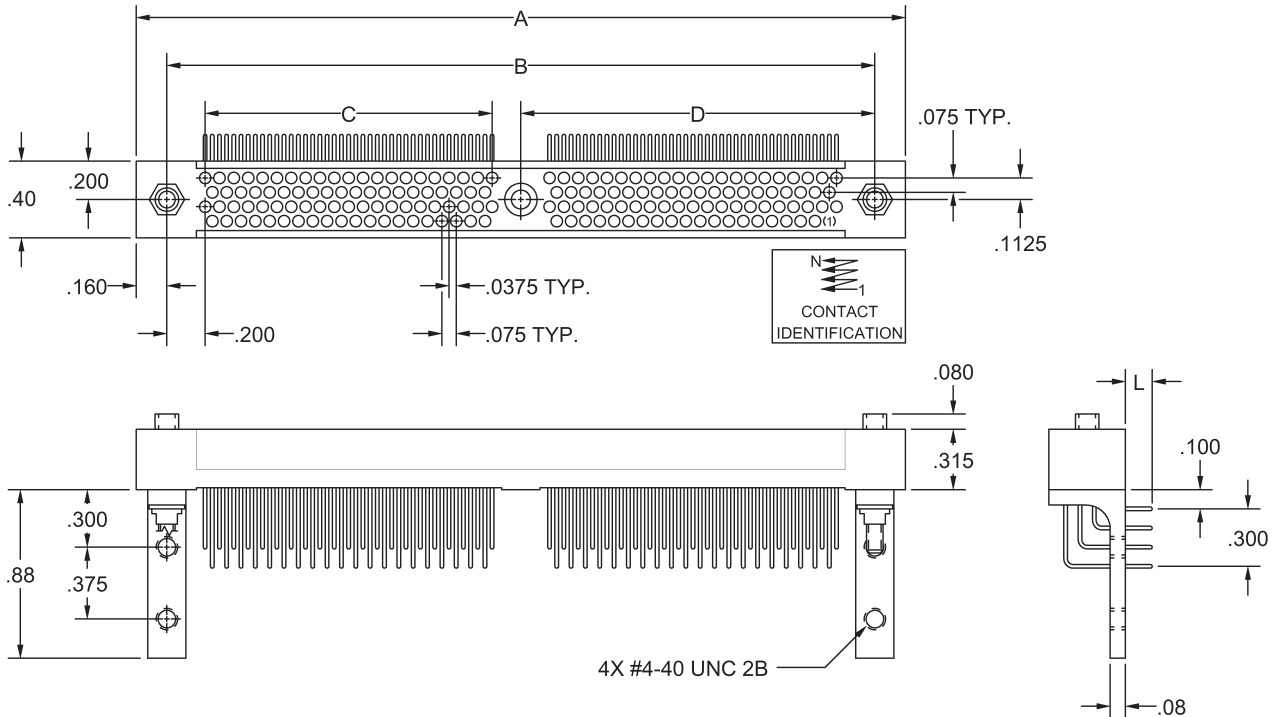


SIZE	A	B	C	D
164	4.020	3.700	1.500	1.850
172	4.170	3.850	1.575	1.925
180	4.320	4.000	1.650	2.000
188	4.470	4.150	1.725	2.075
196	4.620	4.300	1.800	2.150
204	4.770	4.450	1.875	2.225
212	4.920	4.600	1.950	2.300
220	5.070	4.750	2.025	2.375
228	5.220	4.900	2.100	2.450
236	5.370	5.050	2.175	2.525
244	5.520	5.200	2.250	2.600
252	5.670	5.350	2.325	2.675
260	5.820	5.500	2.400	2.750
268	5.970	5.650	2.475	2.825
276	6.120	5.800	2.550	2.900
284	6.270	5.950	2.625	2.975

SIZE	A	B	C	D
292	6.420	6.100	2.700	3.050
300	6.570	6.250	2.775	3.125
308	6.720	6.400	2.850	3.200
316	6.870	6.550	2.925	3.275
324	7.020	6.700	3.000	3.350
332	7.170	6.850	3.075	3.425
340	7.320	7.000	3.150	3.500
348	7.470	7.150	3.225	3.575
356	7.620	7.300	3.300	3.650
364	7.770	7.450	3.375	3.725
372	7.920	7.600	3.450	3.800
380	8.070	7.750	3.525	3.875
388	8.220	7.900	3.600	3.950
396	8.370	8.050	3.675	4.025
404	8.520	8.200	3.750	4.100

**\*REFER TO APPENDIX FOR  
TERMINATION DETAILS,  
HARDWARE STYLES, PO-  
LARIZATION CHART, AND  
PWB PATTERNS**

RECEPTACLE, RIGHT ANGLE  
STYLE FEE

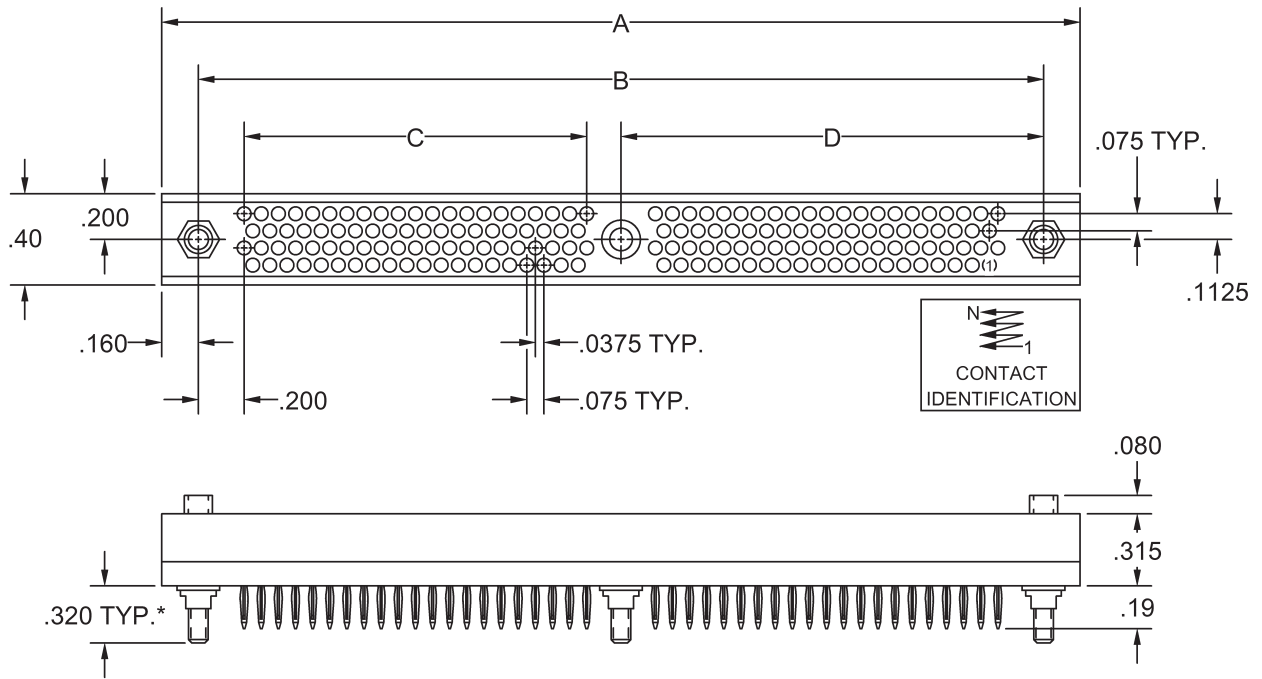


SIZE	A	B	C	D
164	4.020	3.700	1.500	1.850
172	4.170	3.850	1.575	1.925
180	4.320	4.000	1.650	2.000
188	4.470	4.150	1.725	2.075
196	4.620	4.300	1.800	2.150
204	4.770	4.450	1.875	2.225
212	4.920	4.600	1.950	2.300
220	5.070	4.750	2.025	2.375
228	5.220	4.900	2.100	2.450
236	5.370	5.050	2.175	2.525
244	5.520	5.200	2.250	2.600
252	5.670	5.350	2.325	2.675
260	5.820	5.500	2.400	2.750
268	5.970	5.650	2.475	2.825
276	6.120	5.800	2.550	2.900
284	6.270	5.950	2.625	2.975

SIZE	A	B	C	D
292	6.420	6.100	2.700	3.050
300	6.570	6.250	2.775	3.125
308	6.720	6.400	2.850	3.200
316	6.870	6.550	2.925	3.275
324	7.020	6.700	3.000	3.350
332	7.170	6.850	3.075	3.425
340	7.320	7.000	3.150	3.500
348	7.470	7.150	3.225	3.575
356	7.620	7.300	3.300	3.650
364	7.770	7.450	3.375	3.725
372	7.920	7.600	3.450	3.800
380	8.070	7.750	3.525	3.875
388	8.220	7.900	3.600	3.950
396	8.370	8.050	3.675	4.025
404	8.520	8.200	3.750	4.100

REFER TO APPENDIX FOR  
TERMINATION DETAILS,  
HARDWARE STYLES, PO-  
LARIZATION CHART, AND  
PWB PATTERNS

RECEPTACLE, COMPLIANT  
STYLE FVE

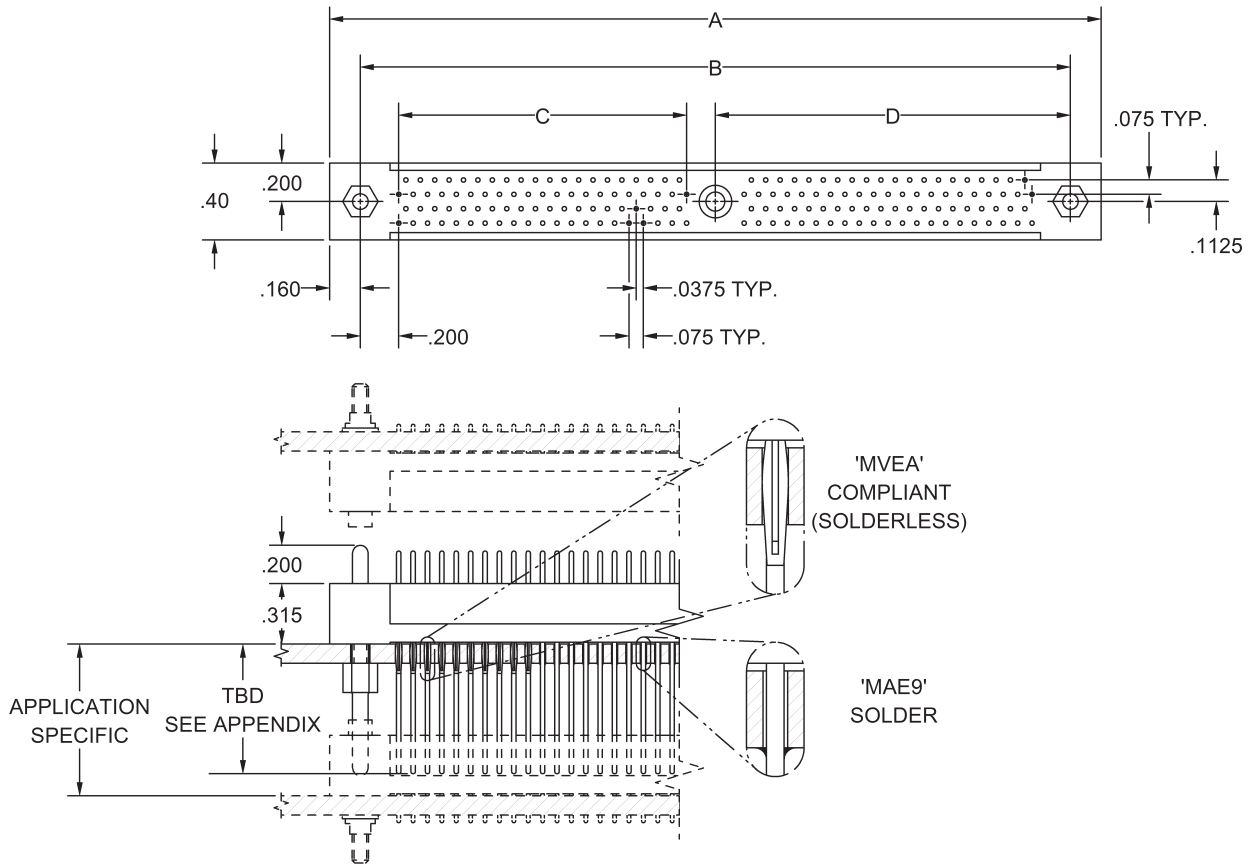


SIZE	A	B	C	D
164	4.020	3.700	1.500	1.850
172	4.170	3.850	1.575	1.925
180	4.320	4.000	1.650	2.000
188	4.470	4.150	1.725	2.075
196	4.620	4.300	1.800	2.150
204	4.770	4.450	1.875	2.225
212	4.920	4.600	1.950	2.300
220	5.070	4.750	2.025	2.375
228	5.220	4.900	2.100	2.450
236	5.370	5.050	2.175	2.525
244	5.520	5.200	2.250	2.600
252	5.670	5.350	2.325	2.675
260	5.820	5.500	2.400	2.750
268	5.970	5.650	2.475	2.825
276	6.120	5.800	2.550	2.900
284	6.270	5.950	2.625	2.975

SIZE	A	B	C	D
292	6.420	6.100	2.700	3.050
300	6.570	6.250	2.775	3.125
308	6.720	6.400	2.850	3.200
316	6.870	6.550	2.925	3.275
324	7.020	6.700	3.000	3.350
332	7.170	6.850	3.075	3.425
340	7.320	7.000	3.150	3.500
348	7.470	7.150	3.225	3.575
356	7.620	7.300	3.300	3.650
364	7.770	7.450	3.375	3.725
372	7.920	7.600	3.450	3.800
380	8.070	7.750	3.525	3.875
388	8.220	7.900	3.600	3.950
396	8.370	8.050	3.675	4.025
404	8.520	8.200	3.750	4.100

**\*REFER TO APPENDIX FOR  
TERMINATION DETAILS,  
HARDWARE STYLES, PO-  
LARIZATION CHART, AND  
PWB PATTERNS**

**PLUG, STACKING  
STYLE MAE9, MVEA**

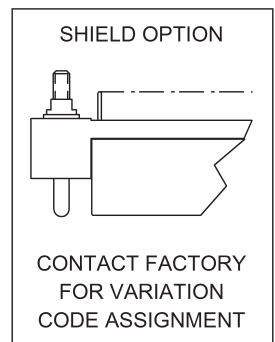
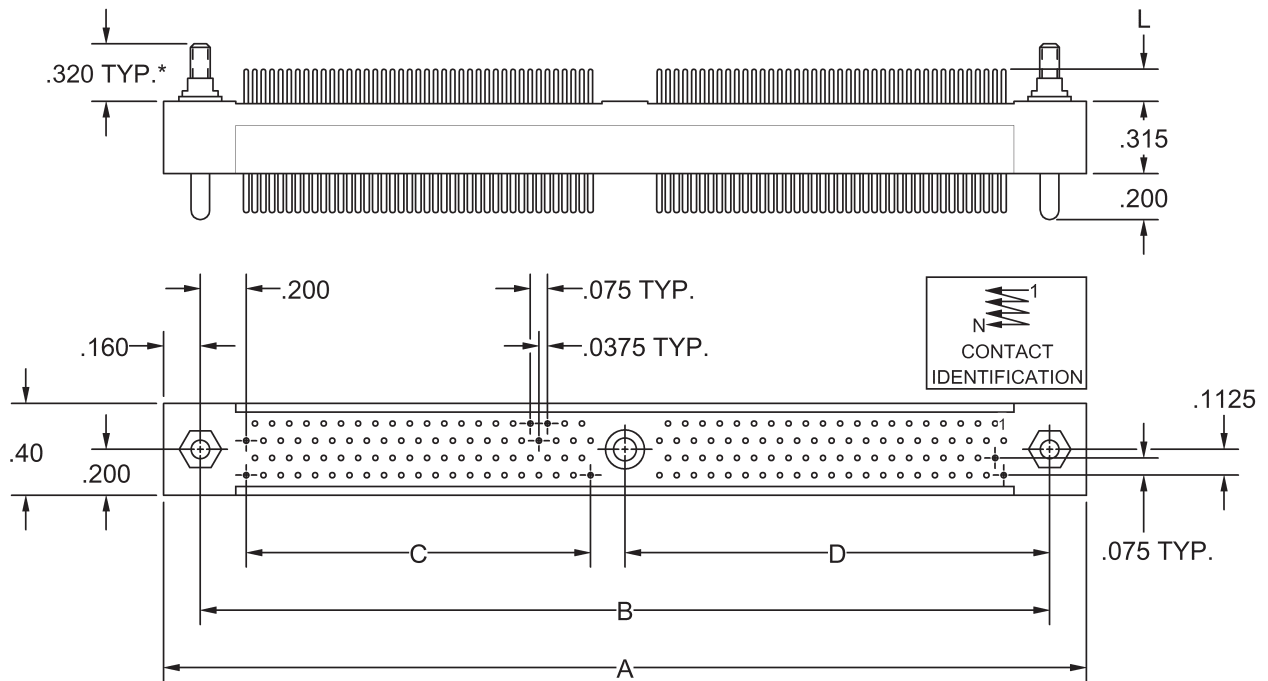


SIZE	A	B	C	D
164	4.020	3.700	1.500	1.850
172	4.170	3.850	1.575	1.925
180	4.320	4.000	1.650	2.000
188	4.470	4.150	1.725	2.075
196	4.620	4.300	1.800	2.150
204	4.770	4.450	1.875	2.225
212	4.920	4.600	1.950	2.300
220	5.070	4.750	2.025	2.375
228	5.220	4.900	2.100	2.450
236	5.370	5.050	2.175	2.525
244	5.520	5.200	2.250	2.600
252	5.670	5.350	2.325	2.675
260	5.820	5.500	2.400	2.750
268	5.970	5.650	2.475	2.825
276	6.120	5.800	2.550	2.900
284	6.270	5.950	2.625	2.975

SIZE	A	B	C	D
292	6.420	6.100	2.700	3.050
300	6.570	6.250	2.775	3.125
308	6.720	6.400	2.850	3.200
316	6.870	6.550	2.925	3.275
324	7.020	6.700	3.000	3.350
332	7.170	6.850	3.075	3.425
340	7.320	7.000	3.150	3.500
348	7.470	7.150	3.225	3.575
356	7.620	7.300	3.300	3.650
364	7.770	7.450	3.375	3.725
372	7.920	7.600	3.450	3.800
380	8.070	7.750	3.525	3.875
388	8.220	7.900	3.600	3.950
396	8.370	8.050	3.675	4.025
404	8.520	8.200	3.750	4.100

**REFER TO APPENDIX FOR  
TERMINATION DETAILS,  
HARDWARE STYLES, PO-  
LARIZATION CHART, AND  
PWB PATTERNS**

**PLUG, STRAIGHT  
STYLE MBE, MDE, MSE**

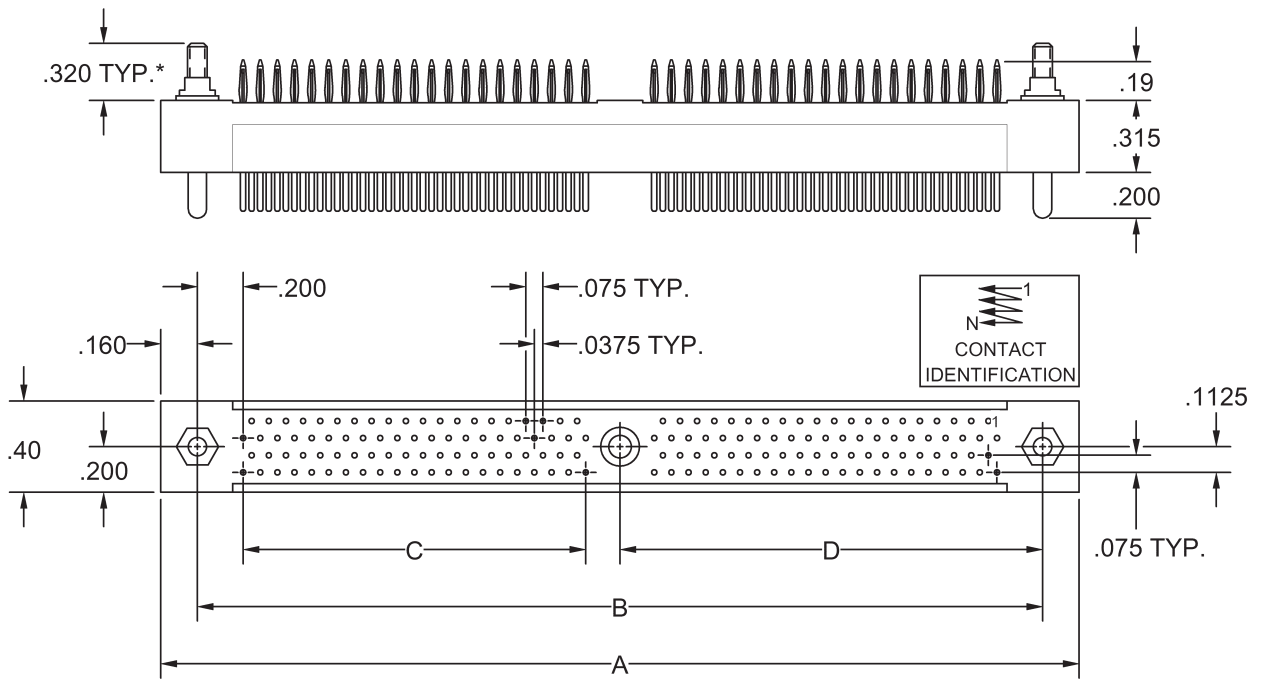


SIZE	A	B	C	D
164	4.020	3.700	1.500	1.850
172	4.170	3.850	1.575	1.925
180	4.320	4.000	1.650	2.000
188	4.470	4.150	1.725	2.075
196	4.620	4.300	1.800	2.150
204	4.770	4.450	1.875	2.225
212	4.920	4.600	1.950	2.300
220	5.070	4.750	2.025	2.375
228	5.220	4.900	2.100	2.450
236	5.370	5.050	2.175	2.525
244	5.520	5.200	2.250	2.600
252	5.670	5.350	2.325	2.675
260	5.820	5.500	2.400	2.750
268	5.970	5.650	2.475	2.825
276	6.120	5.800	2.550	2.900
284	6.270	5.950	2.625	2.975

SIZE	A	B	C	D
292	6.420	6.100	2.700	3.050
300	6.570	6.250	2.775	3.125
308	6.720	6.400	2.850	3.200
316	6.870	6.550	2.925	3.275
324	7.020	6.700	3.000	3.350
332	7.170	6.850	3.075	3.425
340	7.320	7.000	3.150	3.500
348	7.470	7.150	3.225	3.575
356	7.620	7.300	3.300	3.650
364	7.770	7.450	3.375	3.725
372	7.920	7.600	3.450	3.800
380	8.070	7.750	3.525	3.875
388	8.220	7.900	3.600	3.950
396	8.370	8.050	3.675	4.025
404	8.520	8.200	3.750	4.100

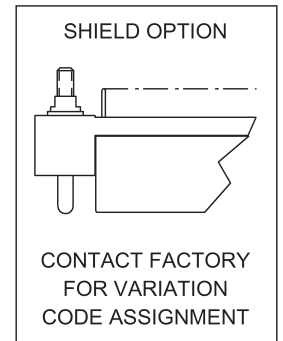
**\*REFER TO APPENDIX FOR  
TERMINATION DETAILS,  
HARDWARE STYLES, PO-  
LARIZATION CHART, AND  
PWB PATTERNS**

**PLUG, COMPLIANT  
STYLE MVE**



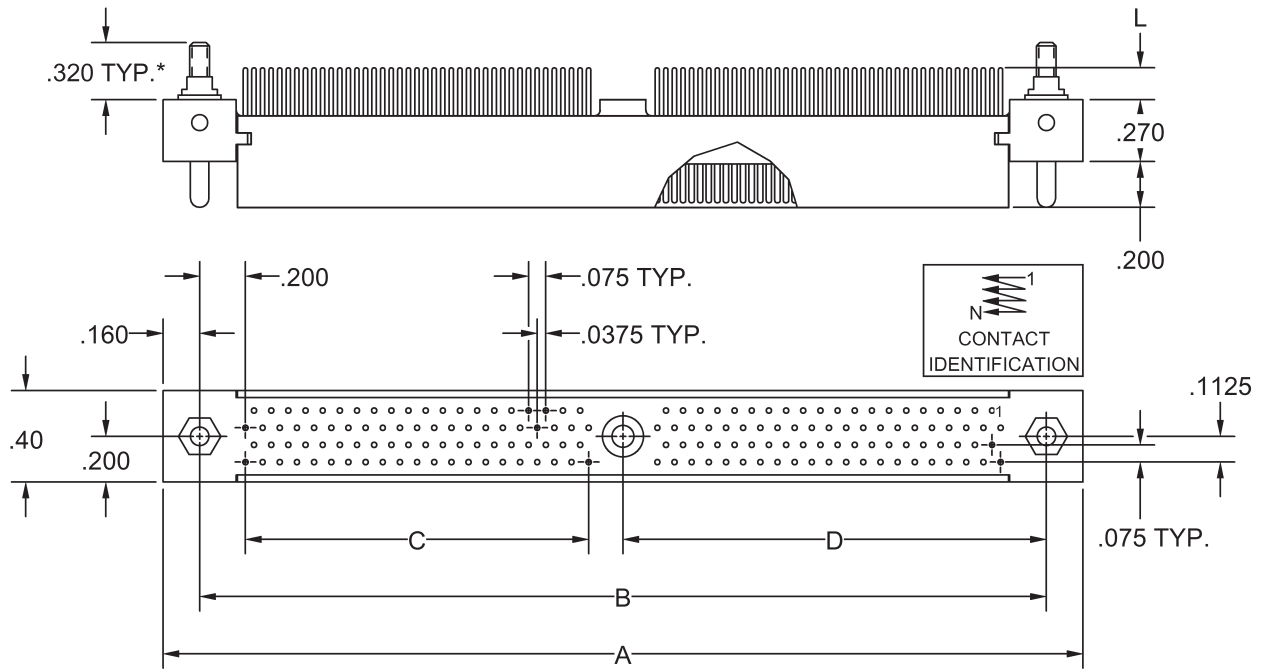
SIZE	A	B	C	D
164	4.020	3.700	1.500	1.850
172	4.170	3.850	1.575	1.925
180	4.320	4.000	1.650	2.000
188	4.470	4.150	1.725	2.075
196	4.620	4.300	1.800	2.150
204	4.770	4.450	1.875	2.225
212	4.920	4.600	1.950	2.300
220	5.070	4.750	2.025	2.375
228	5.220	4.900	2.100	2.450
236	5.370	5.050	2.175	2.525
244	5.520	5.200	2.250	2.600
252	5.670	5.350	2.325	2.675
260	5.820	5.500	2.400	2.750
268	5.970	5.650	2.475	2.825
276	6.120	5.800	2.550	2.900
284	6.270	5.950	2.625	2.975

SIZE	A	B	C	D
292	6.420	6.100	2.700	3.050
300	6.570	6.250	2.775	3.125
308	6.720	6.400	2.850	3.200
316	6.870	6.550	2.925	3.275
324	7.020	6.700	3.000	3.350
332	7.170	6.850	3.075	3.425
340	7.320	7.000	3.150	3.500
348	7.470	7.150	3.225	3.575
356	7.620	7.300	3.300	3.650
364	7.770	7.450	3.375	3.725
372	7.920	7.600	3.450	3.800
380	8.070	7.750	3.525	3.875
388	8.220	7.900	3.600	3.950
396	8.370	8.050	3.675	4.025
404	8.520	8.200	3.750	4.100



**\*REFER TO APPENDIX FOR  
TERMINATION DETAILS,  
HARDWARE STYLES, PO-  
LARIZATION CHART, AND  
PWB PATTERNS**

**PLUG, STRAIGHT, LOW PROFILE  
STYLE RBE, RDE, RSE**



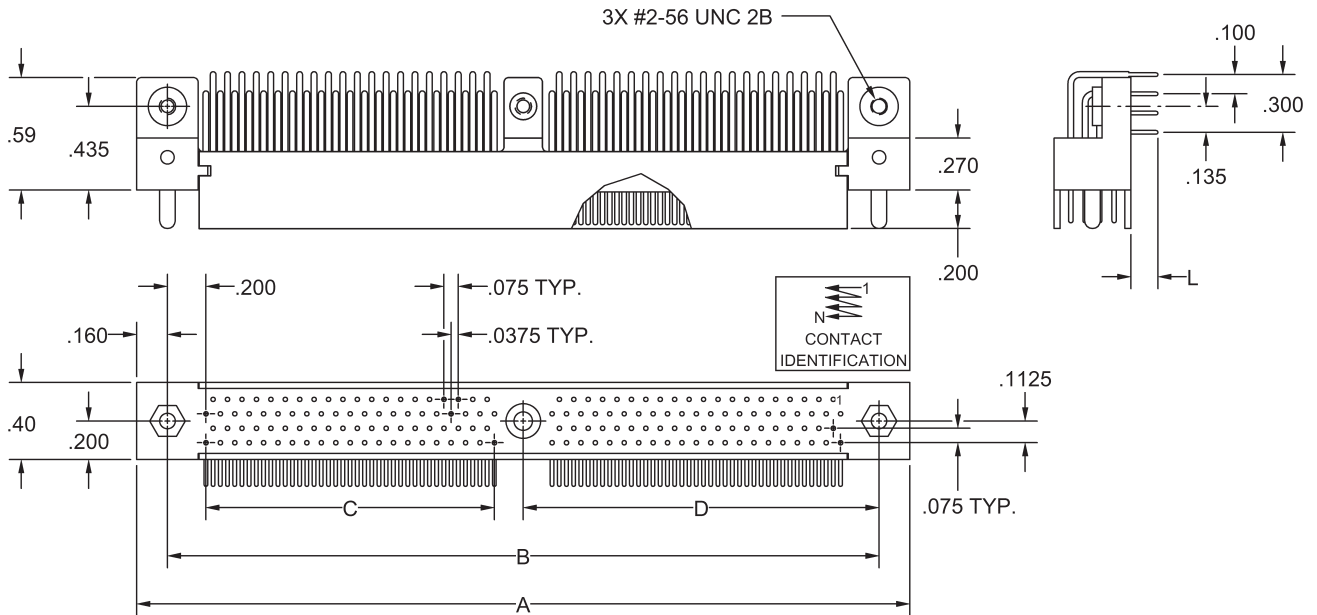
SIZE	A	B	C	D
164	4.020	3.700	1.500	1.850
172	4.170	3.850	1.575	1.925
180	4.320	4.000	1.650	2.000
188	4.470	4.150	1.725	2.075
196	4.620	4.300	1.800	2.150
204	4.770	4.450	1.875	2.225
212	4.920	4.600	1.950	2.300
220	5.070	4.750	2.025	2.375
228	5.220	4.900	2.100	2.450
236	5.370	5.050	2.175	2.525
244	5.520	5.200	2.250	2.600
252	5.670	5.350	2.325	2.675
260	5.820	5.500	2.400	2.750
268	5.970	5.650	2.475	2.825
276	6.120	5.800	2.550	2.900
284	6.270	5.950	2.625	2.975

SIZE	A	B	C	D
292	6.420	6.100	2.700	3.050
300	6.570	6.250	2.775	3.125
308	6.720	6.400	2.850	3.200
316	6.870	6.550	2.925	3.275
324	7.020	6.700	3.000	3.350
332	7.170	6.850	3.075	3.425
340	7.320	7.000	3.150	3.500
348	7.470	7.150	3.225	3.575
356	7.620	7.300	3.300	3.650
364	7.770	7.450	3.375	3.725
372	7.920	7.600	3.450	3.800
380	8.070	7.750	3.525	3.875
388	8.220	7.900	3.600	3.950
396	8.370	8.050	3.675	4.025
404	8.520	8.200	3.750	4.100

**\*REFER TO APPENDIX FOR  
TERMINATION DETAILS,  
HARDWARE STYLES, PO-  
LARIZATION CHART, AND  
PWB PATTERNS**



**PLUG, RIGHT ANGLE, LOW PROFILE  
STYLE MEE**

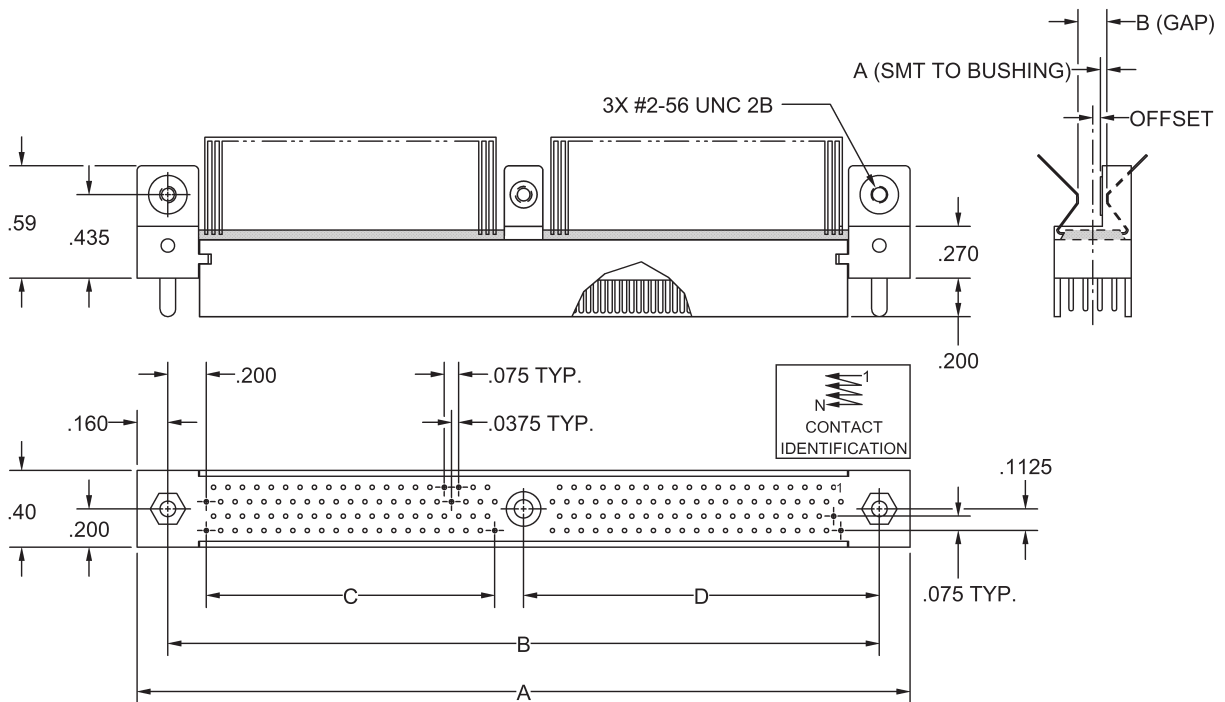


SIZE	A	B	C	D
164	4.020	3.700	1.500	1.850
172	4.170	3.850	1.575	1.925
180	4.320	4.000	1.650	2.000
188	4.470	4.150	1.725	2.075
196	4.620	4.300	1.800	2.150
204	4.770	4.450	1.875	2.225
212	4.920	4.600	1.950	2.300
220	5.070	4.750	2.025	2.375
228	5.220	4.900	2.100	2.450
236	5.370	5.050	2.175	2.525
244	5.520	5.200	2.250	2.600
252	5.670	5.350	2.325	2.675
260	5.820	5.500	2.400	2.750
268	5.970	5.650	2.475	2.825
276	6.120	5.800	2.550	2.900
284	6.270	5.950	2.625	2.975

SIZE	A	B	C	D
292	6.420	6.100	2.700	3.050
300	6.570	6.250	2.775	3.125
308	6.720	6.400	2.850	3.200
316	6.870	6.550	2.925	3.275
324	7.020	6.700	3.000	3.350
332	7.170	6.850	3.075	3.425
340	7.320	7.000	3.150	3.500
348	7.470	7.150	3.225	3.575
356	7.620	7.300	3.300	3.650
364	7.770	7.450	3.375	3.725
372	7.920	7.600	3.450	3.800
380	8.070	7.750	3.525	3.875
388	8.220	7.900	3.600	3.950
396	8.370	8.050	3.675	4.025
404	8.520	8.200	3.750	4.100

**REFER TO APPENDIX FOR  
TERMINATION DETAILS,  
HARDWARE STYLES, PO-  
LARIZATION CHART, AND  
PWB PATTERNS**

**PLUG, SURFACE MOUNT, LOW PROFILE  
STYLE MRE**

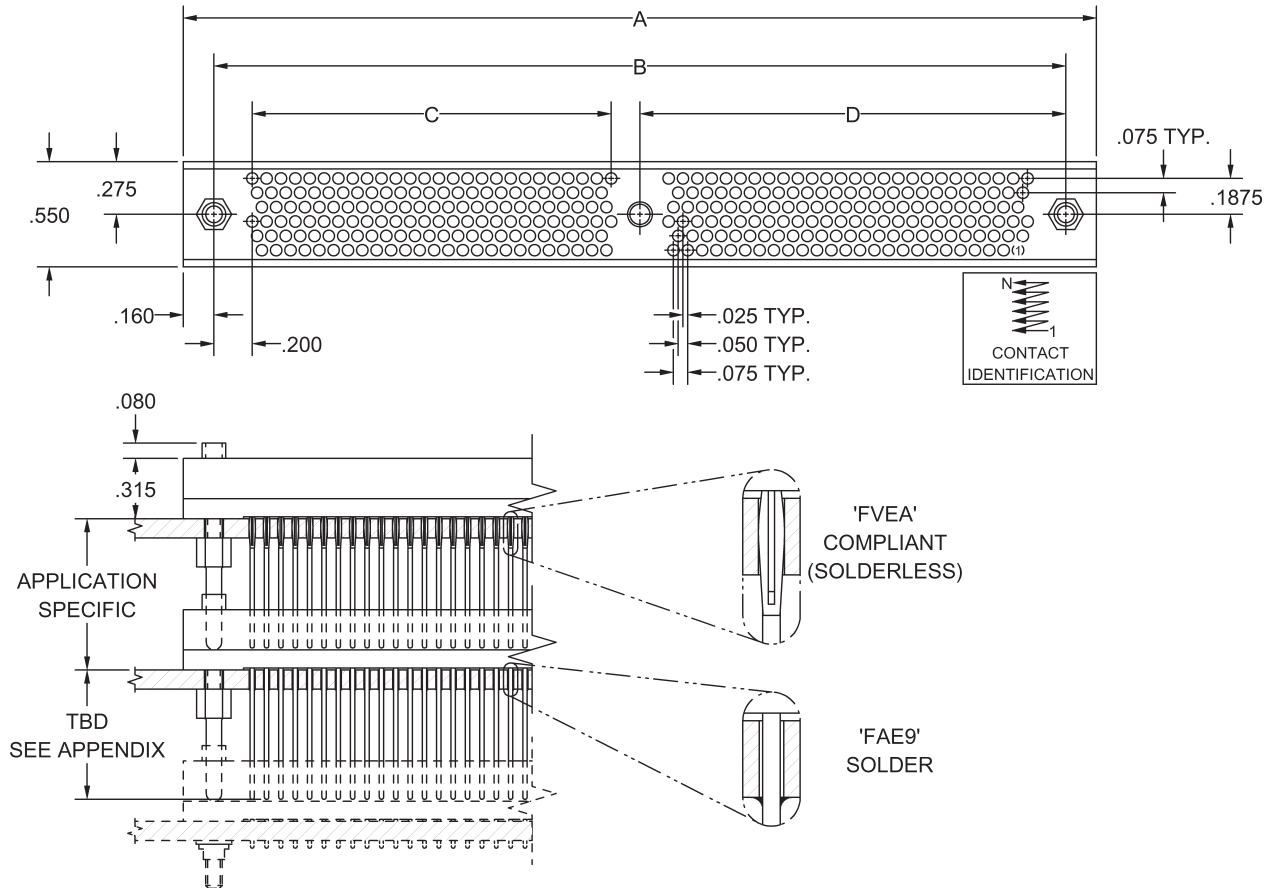


SIZE	A	B	C	D
164	4.020	3.700	1.500	1.850
172	4.170	3.850	1.575	1.925
180	4.320	4.000	1.650	2.000
188	4.470	4.150	1.725	2.075
196	4.620	4.300	1.800	2.150
204	4.770	4.450	1.875	2.225
212	4.920	4.600	1.950	2.300
220	5.070	4.750	2.025	2.375
228	5.220	4.900	2.100	2.450
236	5.370	5.050	2.175	2.525
244	5.520	5.200	2.250	2.600
252	5.670	5.350	2.325	2.675
260	5.820	5.500	2.400	2.750
268	5.970	5.650	2.475	2.825
276	6.120	5.800	2.550	2.900
284	6.270	5.950	2.625	2.975

SIZE	A	B	C	D
292	6.420	6.100	2.700	3.050
300	6.570	6.250	2.775	3.125
308	6.720	6.400	2.850	3.200
316	6.870	6.550	2.925	3.275
324	7.020	6.700	3.000	3.350
332	7.170	6.850	3.075	3.425
340	7.320	7.000	3.150	3.500
348	7.470	7.150	3.225	3.575
356	7.620	7.300	3.300	3.650
364	7.770	7.450	3.375	3.725
372	7.920	7.600	3.450	3.800
380	8.070	7.750	3.525	3.875
388	8.220	7.900	3.600	3.950
396	8.370	8.050	3.675	4.025
404	8.520	8.200	3.750	4.100

**REFER TO APPENDIX FOR  
TERMINATION DETAILS,  
HARDWARE STYLES, PO-  
LARIZATION CHART, AND  
PWB PATTERNS**

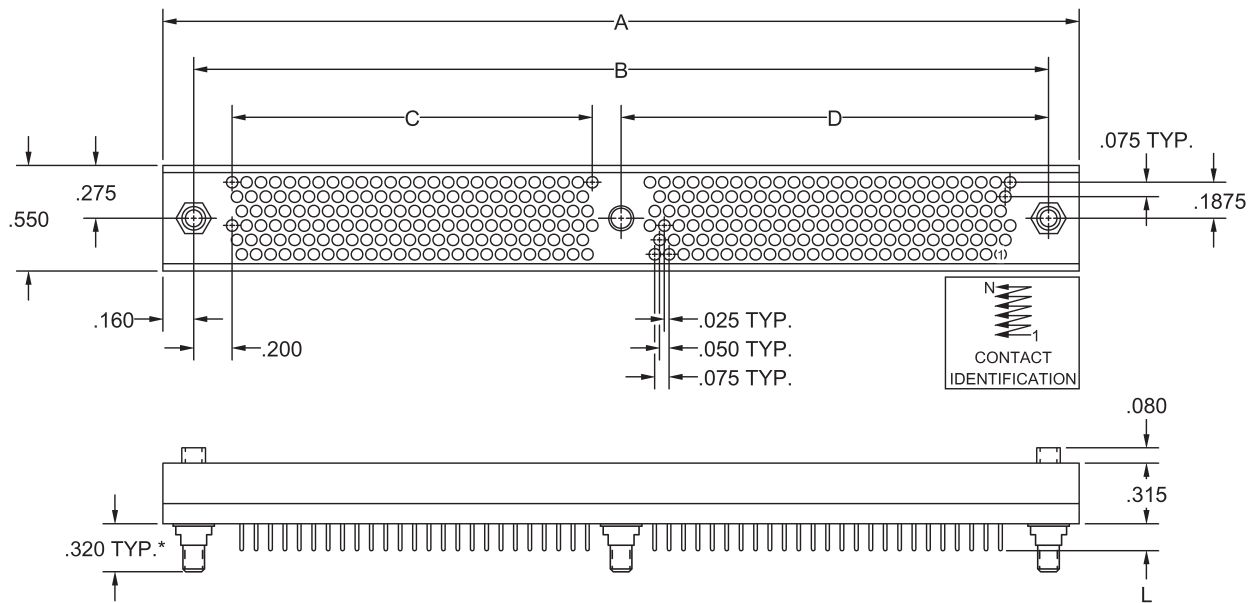
RECEPTACLE, STACKING  
STYLE FAE9, FVEA



SIZE	A	B	C	D	SIZE	A	B	C	D
304	4.770	4.450	1.875	2.225	460	6.720	6.400	2.850	3.200
316	4.920	4.600	1.950	2.300	472	6.870	6.550	2.925	3.275
328	5.070	4.750	2.025	2.375	484	7.020	6.700	3.000	3.350
340	5.220	4.900	2.100	2.450	496	7.170	6.850	3.075	3.425
352	5.370	5.050	2.175	2.525	508	7.320	7.000	3.150	3.500
364	5.520	5.200	2.250	2.600	520	7.470	7.150	3.225	3.575
376	5.670	5.350	2.325	2.675	532	7.620	7.300	3.300	3.650
388	5.820	5.500	2.400	2.750	544	7.770	7.450	3.375	3.725
400	5.970	5.650	2.475	2.825	556	7.920	7.600	3.450	3.800
412	6.120	5.800	2.550	2.900	568	8.070	7.750	3.525	3.875
424	6.270	5.950	2.625	2.975	580	8.220	7.900	3.600	3.950
436	6.420	6.100	2.700	3.050	592	8.370	8.050	3.675	4.025
448	6.570	6.250	2.775	3.125	604	8.520	8.200	3.750	4.100

REFER TO APPENDIX FOR  
TERMINATION DETAILS,  
HARDWARE STYLES, PO-  
LARIZATION CHART, AND  
PWB PATTERNS

RECEPTACLE, STRAIGHT  
STYLE FBE, FDE, FSE, FWE

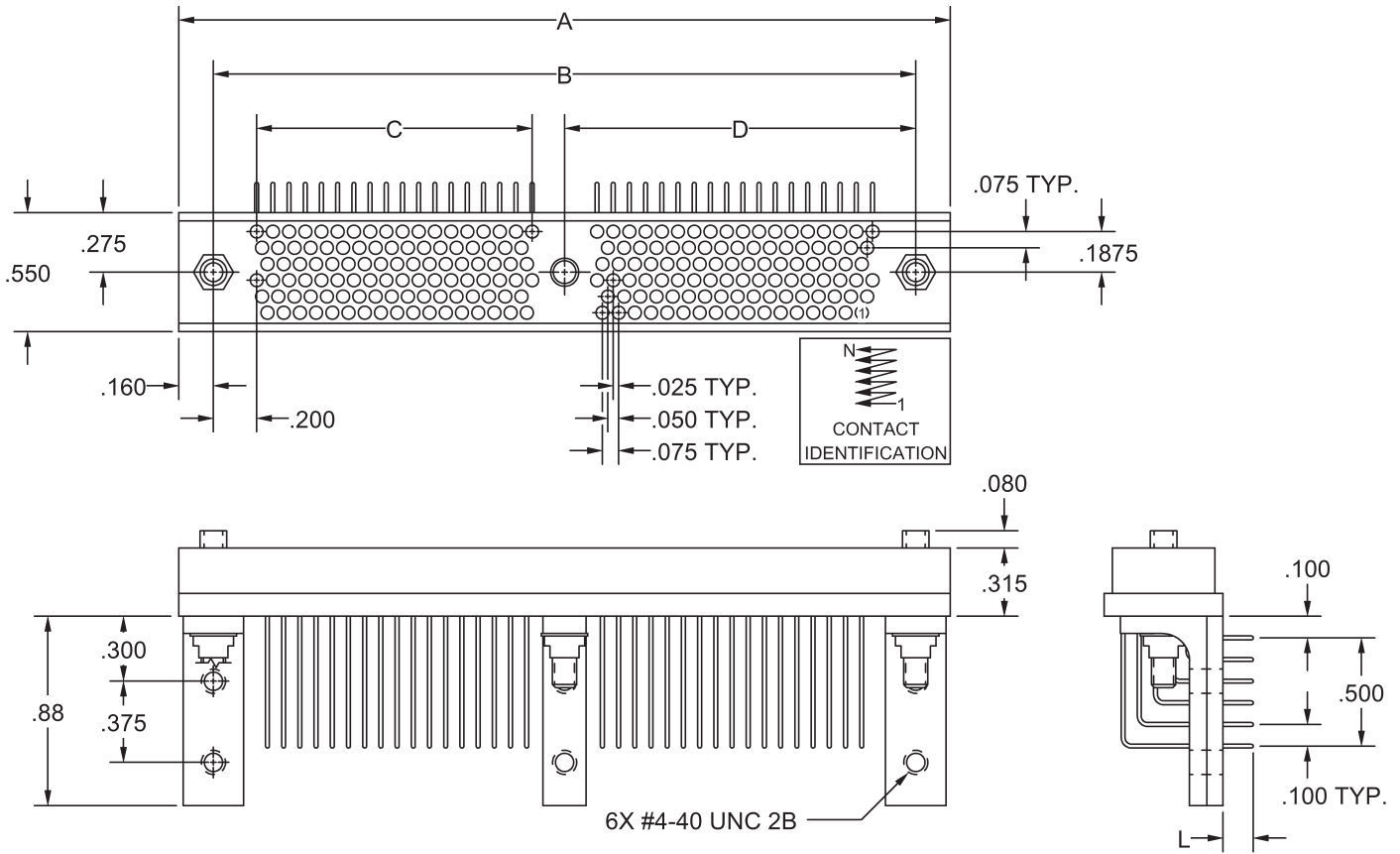


SIZE	A	B	C	D
304	4.770	4.450	1.875	2.225
316	4.920	4.600	1.950	2.300
328	5.070	4.750	2.025	2.375
340	5.220	4.900	2.100	2.450
352	5.370	5.050	2.175	2.525
364	5.520	5.200	2.250	2.600
376	5.670	5.350	2.325	2.675
388	5.820	5.500	2.400	2.750
400	5.970	5.650	2.475	2.825
412	6.120	5.800	2.550	2.900
424	6.270	5.950	2.625	2.975
436	6.420	6.100	2.700	3.050
448	6.570	6.250	2.775	3.125

SIZE	A	B	C	D
460	6.720	6.400	2.850	3.200
472	6.870	6.550	2.925	3.275
484	7.020	6.700	3.000	3.350
496	7.170	6.850	3.075	3.425
508	7.320	7.000	3.150	3.500
520	7.470	7.150	3.225	3.575
532	7.620	7.300	3.300	3.650
544	7.770	7.450	3.375	3.725
556	7.920	7.600	3.450	3.800
568	8.070	7.750	3.525	3.875
580	8.220	7.900	3.600	3.950
592	8.370	8.050	3.675	4.025
604	8.520	8.200	3.750	4.100

**\*REFER TO APPENDIX FOR  
TERMINATION DETAILS,  
HARDWARE STYLES, PO-  
LARIZATION CHART, AND  
PWB PATTERNS**

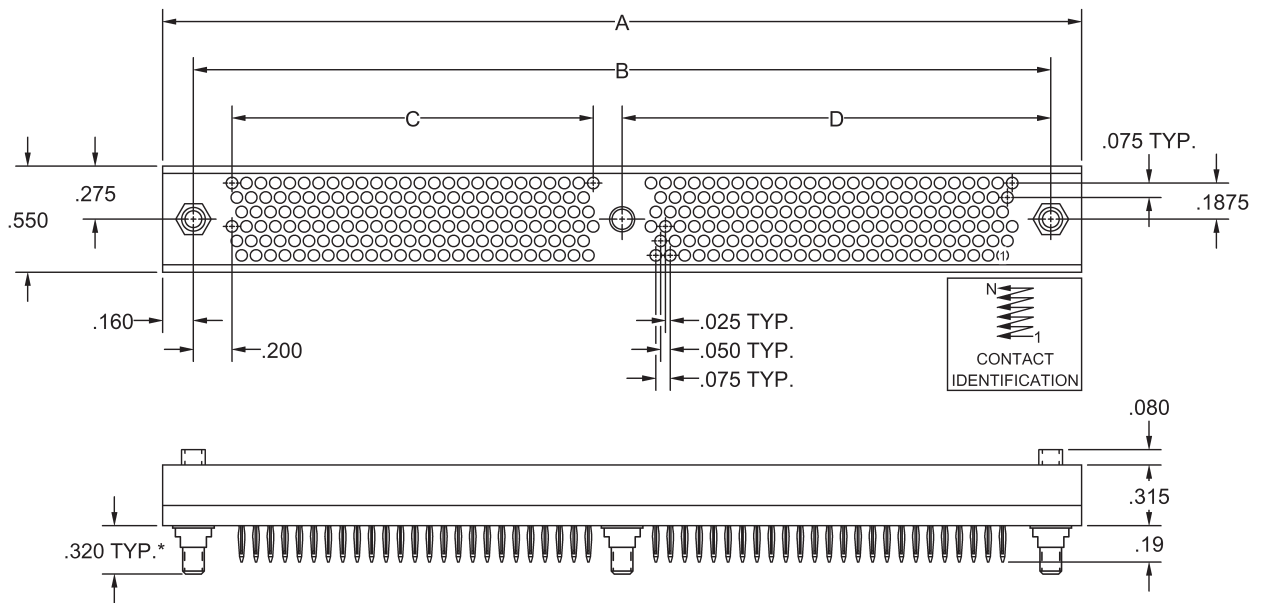
RECEPTACLE, RIGHT ANGLE  
STYLE FEE



SIZE	A	B	C	D	SIZE	A	B	C	D
304	4.770	4.450	1.875	2.225	460	6.720	6.400	2.850	3.200
316	4.920	4.600	1.950	2.300	472	6.870	6.550	2.925	3.275
328	5.070	4.750	2.025	2.375	484	7.020	6.700	3.000	3.350
340	5.220	4.900	2.100	2.450	496	7.170	6.850	3.075	3.425
352	5.370	5.050	2.175	2.525	508	7.320	7.000	3.150	3.500
364	5.520	5.200	2.250	2.600	520	7.470	7.150	3.225	3.575
376	5.670	5.350	2.325	2.675	532	7.620	7.300	3.300	3.650
388	5.820	5.500	2.400	2.750	544	7.770	7.450	3.375	3.725
400	5.970	5.650	2.475	2.825	556	7.920	7.600	3.450	3.800
412	6.120	5.800	2.550	2.900	568	8.070	7.750	3.525	3.875
424	6.270	5.950	2.625	2.975	580	8.220	7.900	3.600	3.950
436	6.420	6.100	2.700	3.050	592	8.370	8.050	3.675	4.025
448	6.570	6.250	2.775	3.125	604	8.520	8.200	3.750	4.100

REFER TO APPENDIX FOR  
TERMINATION DETAILS,  
HARDWARE STYLES, PO-  
LARIZATION CHART, AND  
PWB PATTERNS

RECEPTACLE, COMPLIANT  
STYLE FVE

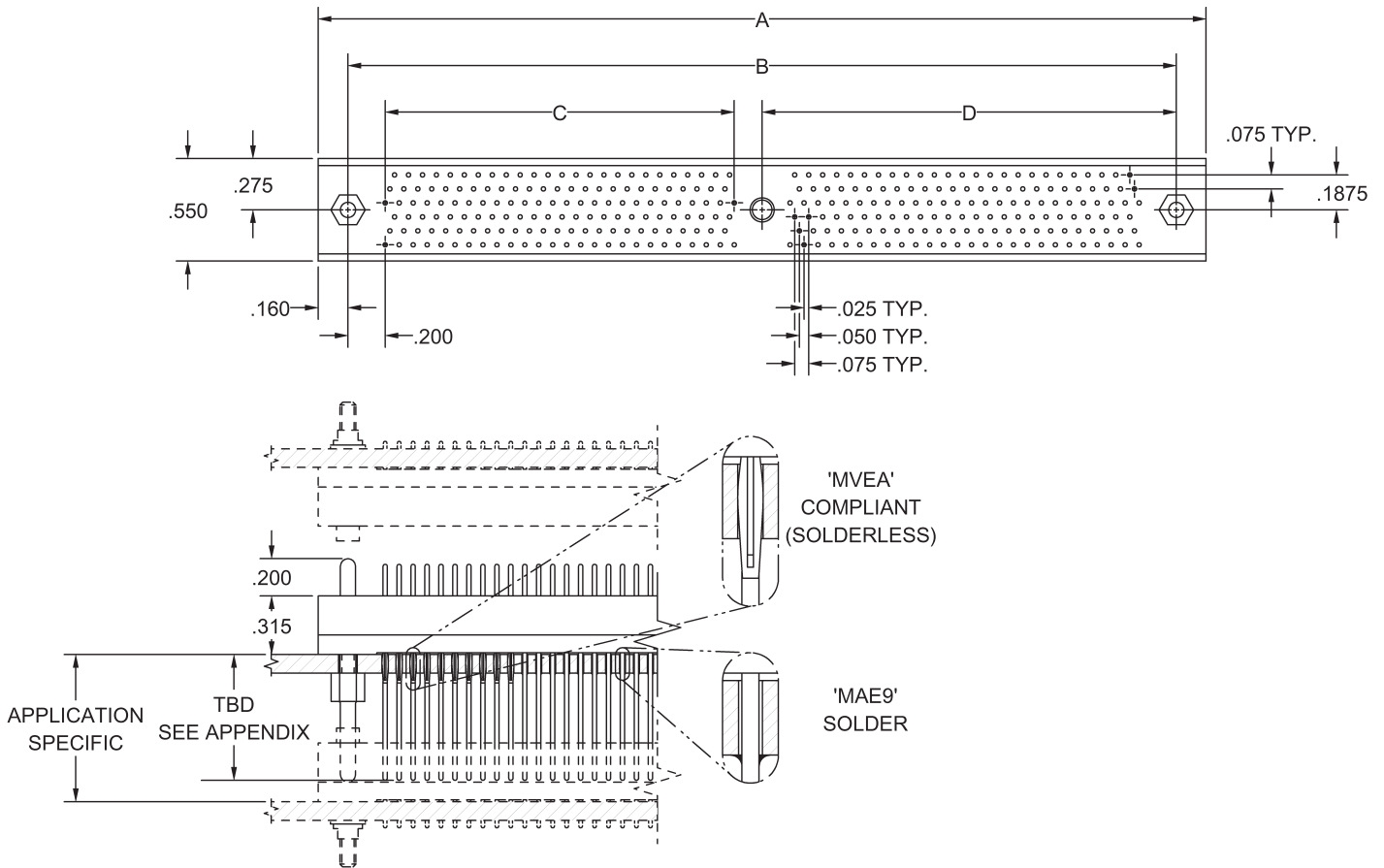


SIZE	A	B	C	D
304	4.770	4.450	1.875	2.225
316	4.920	4.600	1.950	2.300
328	5.070	4.750	2.025	2.375
340	5.220	4.900	2.100	2.450
352	5.370	5.050	2.175	2.525
364	5.520	5.200	2.250	2.600
376	5.670	5.350	2.325	2.675
388	5.820	5.500	2.400	2.750
400	5.970	5.650	2.475	2.825
412	6.120	5.800	2.550	2.900
424	6.270	5.950	2.625	2.975
436	6.420	6.100	2.700	3.050
448	6.570	6.250	2.775	3.125

SIZE	A	B	C	D
460	6.720	6.400	2.850	3.200
472	6.870	6.550	2.925	3.275
484	7.020	6.700	3.000	3.350
496	7.170	6.850	3.075	3.425
508	7.320	7.000	3.150	3.500
520	7.470	7.150	3.225	3.575
532	7.620	7.300	3.300	3.650
544	7.770	7.450	3.375	3.725
556	7.920	7.600	3.450	3.800
568	8.070	7.750	3.525	3.875
580	8.220	7.900	3.600	3.950
592	8.370	8.050	3.675	4.025
604	8.520	8.200	3.750	4.100

**\*REFER TO APPENDIX FOR  
TERMINATION DETAILS,  
HARDWARE STYLES, PO-  
LARIZATION CHART, AND  
PWB PATTERNS**

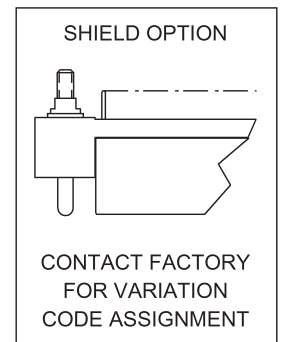
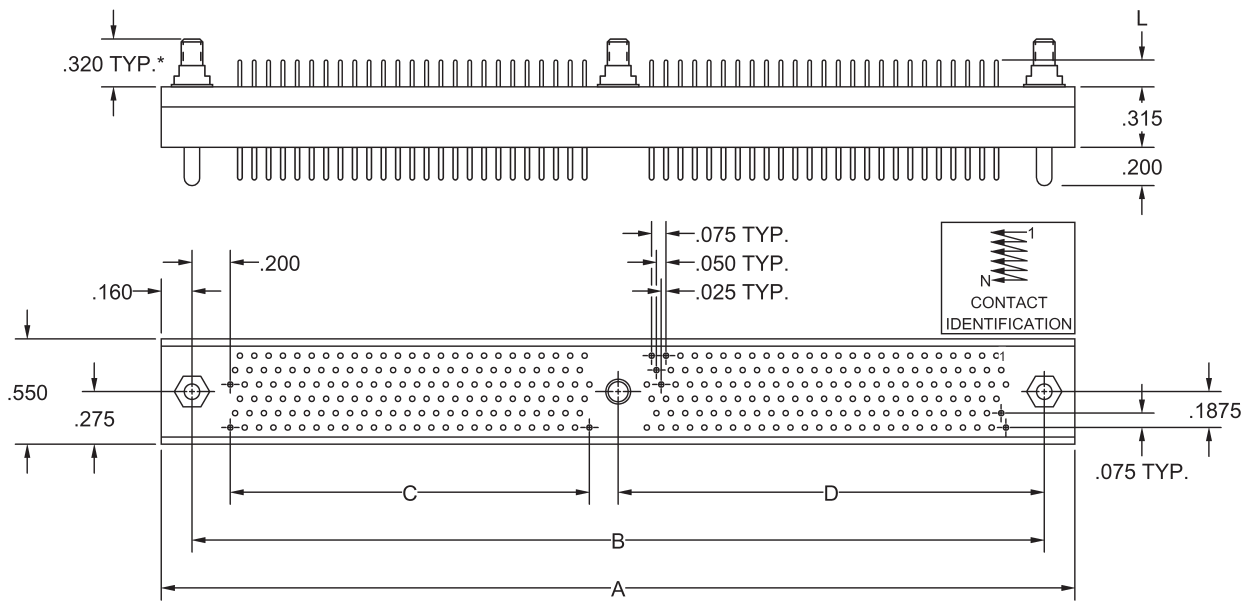
**PLUG, STACKING  
STYLE MAE9, MVEA**



SIZE	A	B	C	D	SIZE	A	B	C	D
304	4.770	4.450	1.875	2.225	460	6.720	6.400	2.850	3.200
316	4.920	4.600	1.950	2.300	472	6.870	6.550	2.925	3.275
328	5.070	4.750	2.025	2.375	484	7.020	6.700	3.000	3.350
340	5.220	4.900	2.100	2.450	496	7.170	6.850	3.075	3.425
352	5.370	5.050	2.175	2.525	508	7.320	7.000	3.150	3.500
364	5.520	5.200	2.250	2.600	520	7.470	7.150	3.225	3.575
376	5.670	5.350	2.325	2.675	532	7.620	7.300	3.300	3.650
388	5.820	5.500	2.400	2.750	544	7.770	7.450	3.375	3.725
400	5.970	5.650	2.475	2.825	556	7.920	7.600	3.450	3.800
412	6.120	5.800	2.550	2.900	568	8.070	7.750	3.525	3.875
424	6.270	5.950	2.625	2.975	580	8.220	7.900	3.600	3.950
436	6.420	6.100	2.700	3.050	592	8.370	8.050	3.675	4.025
448	6.570	6.250	2.775	3.125	604	8.520	8.200	3.750	4.100

**REFER TO APPENDIX FOR  
TERMINATION DETAILS,  
HARDWARE STYLES, PO-  
LARIZATION CHART, AND  
PWB PATTERNS**

**PLUG, STRAIGHT  
STYLE MBE, MDE, MSE**



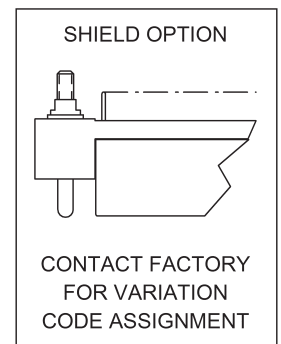
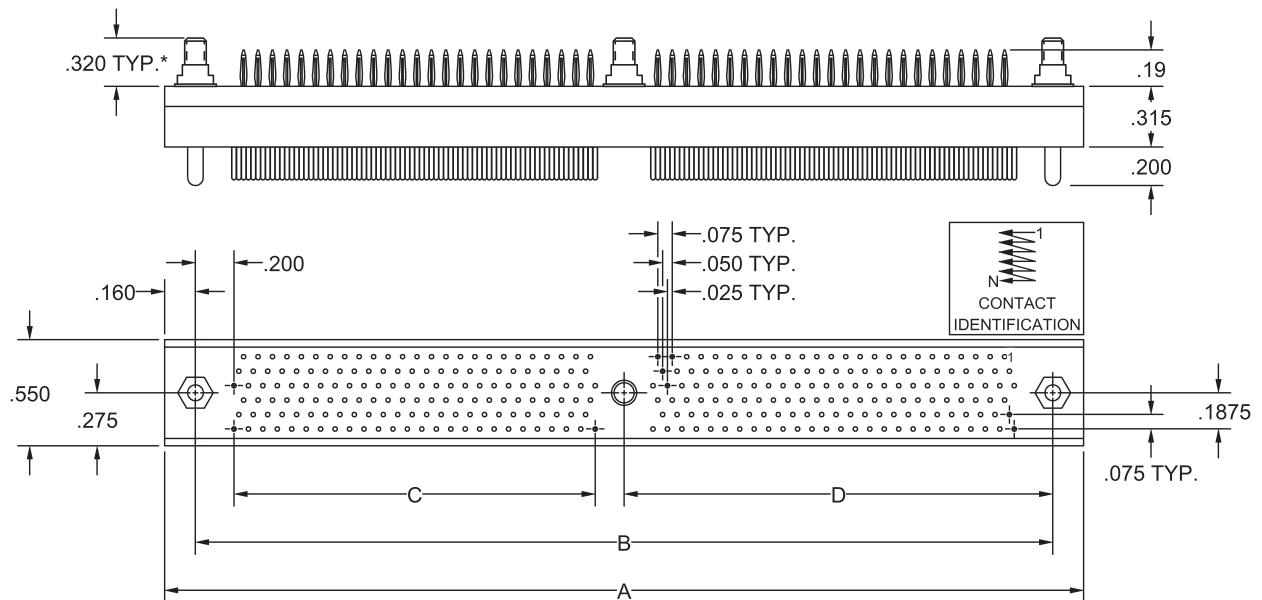
SIZE	A	B	C	D
304	4.770	4.450	1.875	2.225
316	4.920	4.600	1.950	2.300
328	5.070	4.750	2.025	2.375
340	5.220	4.900	2.100	2.450
352	5.370	5.050	2.175	2.525
364	5.520	5.200	2.250	2.600
376	5.670	5.350	2.325	2.675
388	5.820	5.500	2.400	2.750
400	5.970	5.650	2.475	2.825
412	6.120	5.800	2.550	2.900
424	6.270	5.950	2.625	2.975
436	6.420	6.100	2.700	3.050
448	6.570	6.250	2.775	3.125

SIZE	A	B	C	D
460	6.720	6.400	2.850	3.200
472	6.870	6.550	2.925	3.275
484	7.020	6.700	3.000	3.350
496	7.170	6.850	3.075	3.425
508	7.320	7.000	3.150	3.500
520	7.470	7.150	3.225	3.575
532	7.620	7.300	3.300	3.650
544	7.770	7.450	3.375	3.725
556	7.920	7.600	3.450	3.800
568	8.070	7.750	3.525	3.875
580	8.220	7.900	3.600	3.950
592	8.370	8.050	3.675	4.025
604	8.520	8.200	3.750	4.100

**\*REFER TO APPENDIX FOR  
TERMINATION DETAILS,  
HARDWARE STYLES, PO-  
LARIZATION CHART, AND  
PWB PATTERNS**



**PLUG, COMPLIANT  
STYLE MVE**

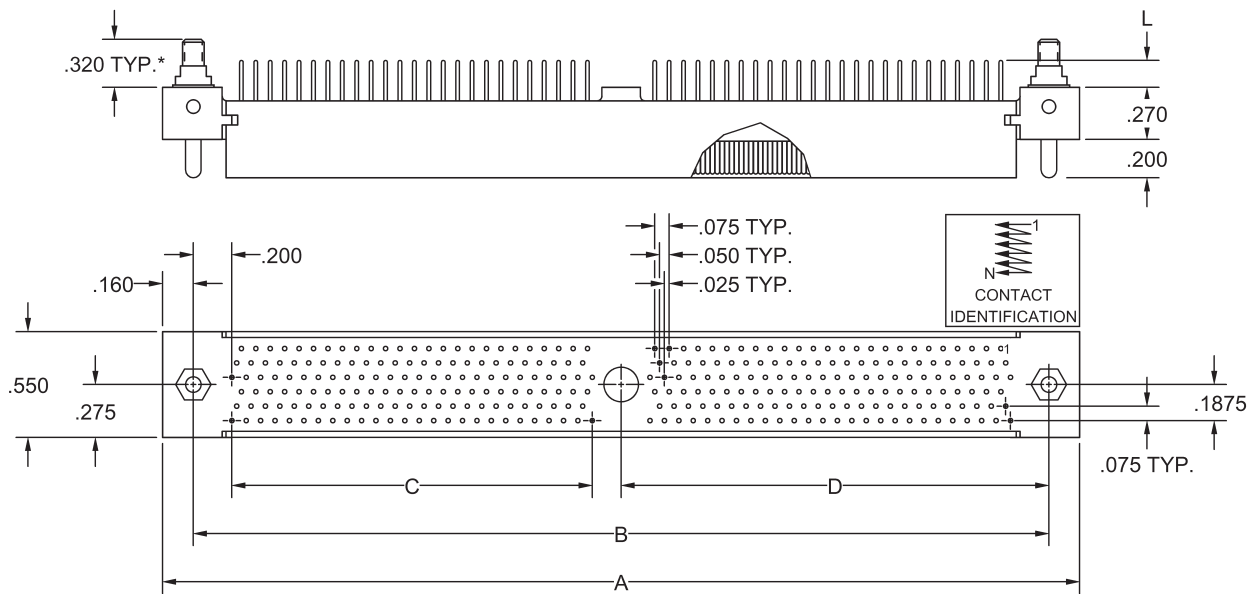


SIZE	A	B	C	D
304	4.770	4.450	1.875	2.225
316	4.920	4.600	1.950	2.300
328	5.070	4.750	2.025	2.375
340	5.220	4.900	2.100	2.450
352	5.370	5.050	2.175	2.525
364	5.520	5.200	2.250	2.600
376	5.670	5.350	2.325	2.675
388	5.820	5.500	2.400	2.750
400	5.970	5.650	2.475	2.825
412	6.120	5.800	2.550	2.900
424	6.270	5.950	2.625	2.975
436	6.420	6.100	2.700	3.050
448	6.570	6.250	2.775	3.125

SIZE	A	B	C	D
460	6.720	6.400	2.850	3.200
472	6.870	6.550	2.925	3.275
484	7.020	6.700	3.000	3.350
496	7.170	6.850	3.075	3.425
508	7.320	7.000	3.150	3.500
520	7.470	7.150	3.225	3.575
532	7.620	7.300	3.300	3.650
544	7.770	7.450	3.375	3.725
556	7.920	7.600	3.450	3.800
568	8.070	7.750	3.525	3.875
580	8.220	7.900	3.600	3.950
592	8.370	8.050	3.675	4.025
604	8.520	8.200	3.750	4.100

**\*REFER TO APPENDIX FOR  
TERMINATION DETAILS,  
HARDWARE STYLES, PO-  
LARIZATION CHART, AND  
PWB PATTERNS**

**PLUG, STRAIGHT, LOW PROFILE  
STYLE RBE, RDE, RSE**

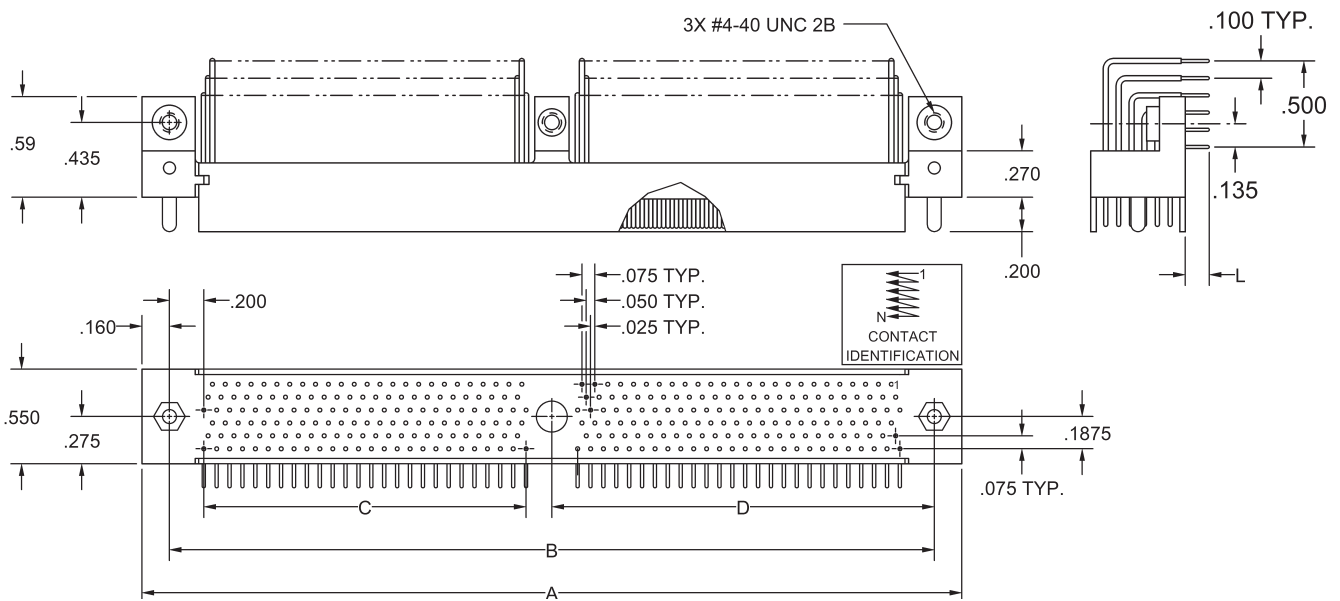


SIZE	A	B	C	D
304	4.770	4.450	1.875	2.225
316	4.920	4.600	1.950	2.300
328	5.070	4.750	2.025	2.375
340	5.220	4.900	2.100	2.450
352	5.370	5.050	2.175	2.525
364	5.520	5.200	2.250	2.600
376	5.670	5.350	2.325	2.675
388	5.820	5.500	2.400	2.750
400	5.970	5.650	2.475	2.825
412	6.120	5.800	2.550	2.900
424	6.270	5.950	2.625	2.975
436	6.420	6.100	2.700	3.050
448	6.570	6.250	2.775	3.125

SIZE	A	B	C	D
460	6.720	6.400	2.850	3.200
472	6.870	6.550	2.925	3.275
484	7.020	6.700	3.000	3.350
496	7.170	6.850	3.075	3.425
508	7.320	7.000	3.150	3.500
520	7.470	7.150	3.225	3.575
532	7.620	7.300	3.300	3.650
544	7.770	7.450	3.375	3.725
556	7.920	7.600	3.450	3.800
568	8.070	7.750	3.525	3.875
580	8.220	7.900	3.600	3.950
592	8.370	8.050	3.675	4.025
604	8.520	8.200	3.750	4.100

**\*REFER TO APPENDIX FOR  
TERMINATION DETAILS,  
HARDWARE STYLES, PO-  
LARIZATION CHART, AND  
PWB PATTERNS**

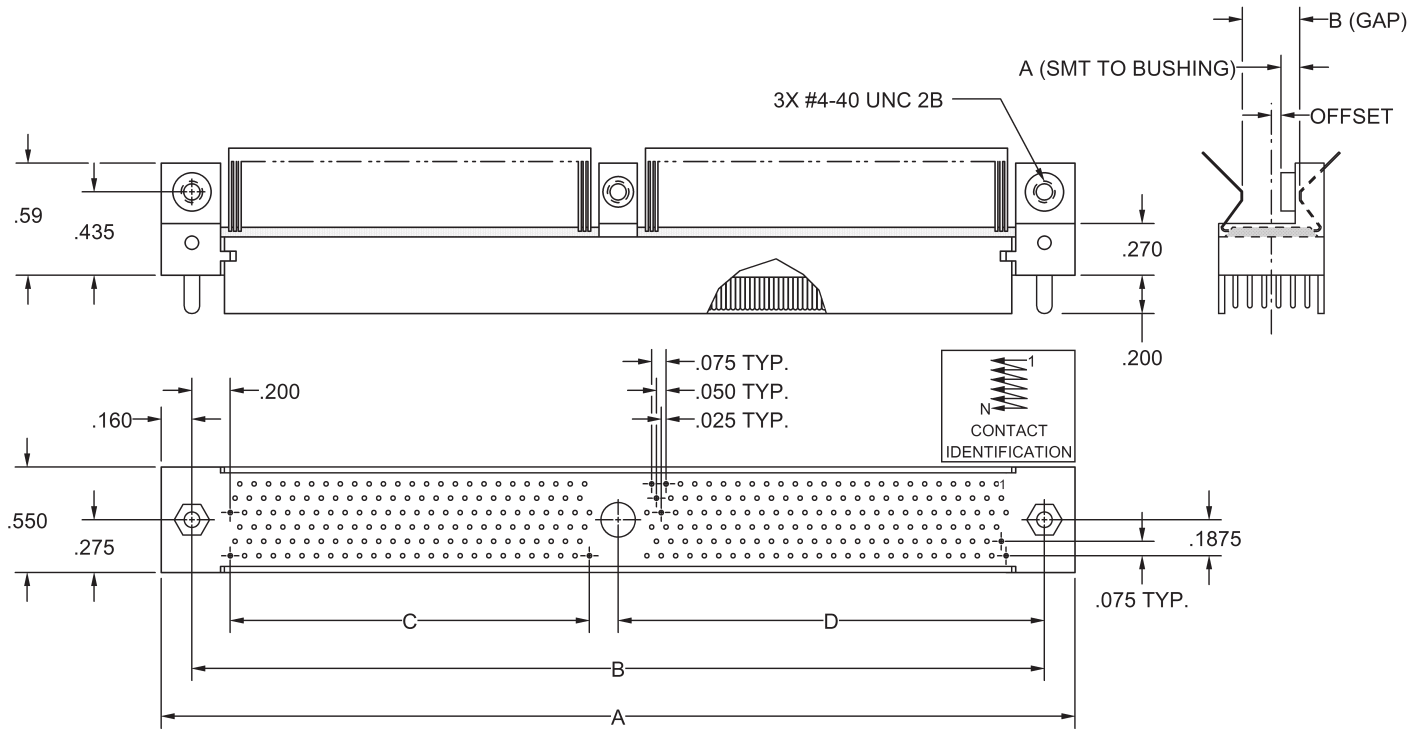
**PLUG, RIGHT ANGLE, LOW PROFILE  
STYLE MEE**



SIZE	A	B	C	D	SIZE	A	B	C	D
304	4.770	4.450	1.875	2.225	460	6.720	6.400	2.850	3.200
316	4.920	4.600	1.950	2.300	472	6.870	6.550	2.925	3.275
328	5.070	4.750	2.025	2.375	484	7.020	6.700	3.000	3.350
340	5.220	4.900	2.100	2.450	496	7.170	6.850	3.075	3.425
352	5.370	5.050	2.175	2.525	508	7.320	7.000	3.150	3.500
364	5.520	5.200	2.250	2.600	520	7.470	7.150	3.225	3.575
376	5.670	5.350	2.325	2.675	532	7.620	7.300	3.300	3.650
388	5.820	5.500	2.400	2.750	544	7.770	7.450	3.375	3.725
400	5.970	5.650	2.475	2.825	556	7.920	7.600	3.450	3.800
412	6.120	5.800	2.550	2.900	568	8.070	7.750	3.525	3.875
424	6.270	5.950	2.625	2.975	580	8.220	7.900	3.600	3.950
436	6.420	6.100	2.700	3.050	592	8.370	8.050	3.675	4.025
448	6.570	6.250	2.775	3.125	604	8.520	8.200	3.750	4.100

**REFER TO APPENDIX FOR  
TERMINATION DETAILS,  
HARDWARE STYLES, PO-  
LARIZATION CHART, AND  
PWB PATTERNS**

**PLUG, SURFACE MOUNT, LOW PROFILE  
STYLE MRE**

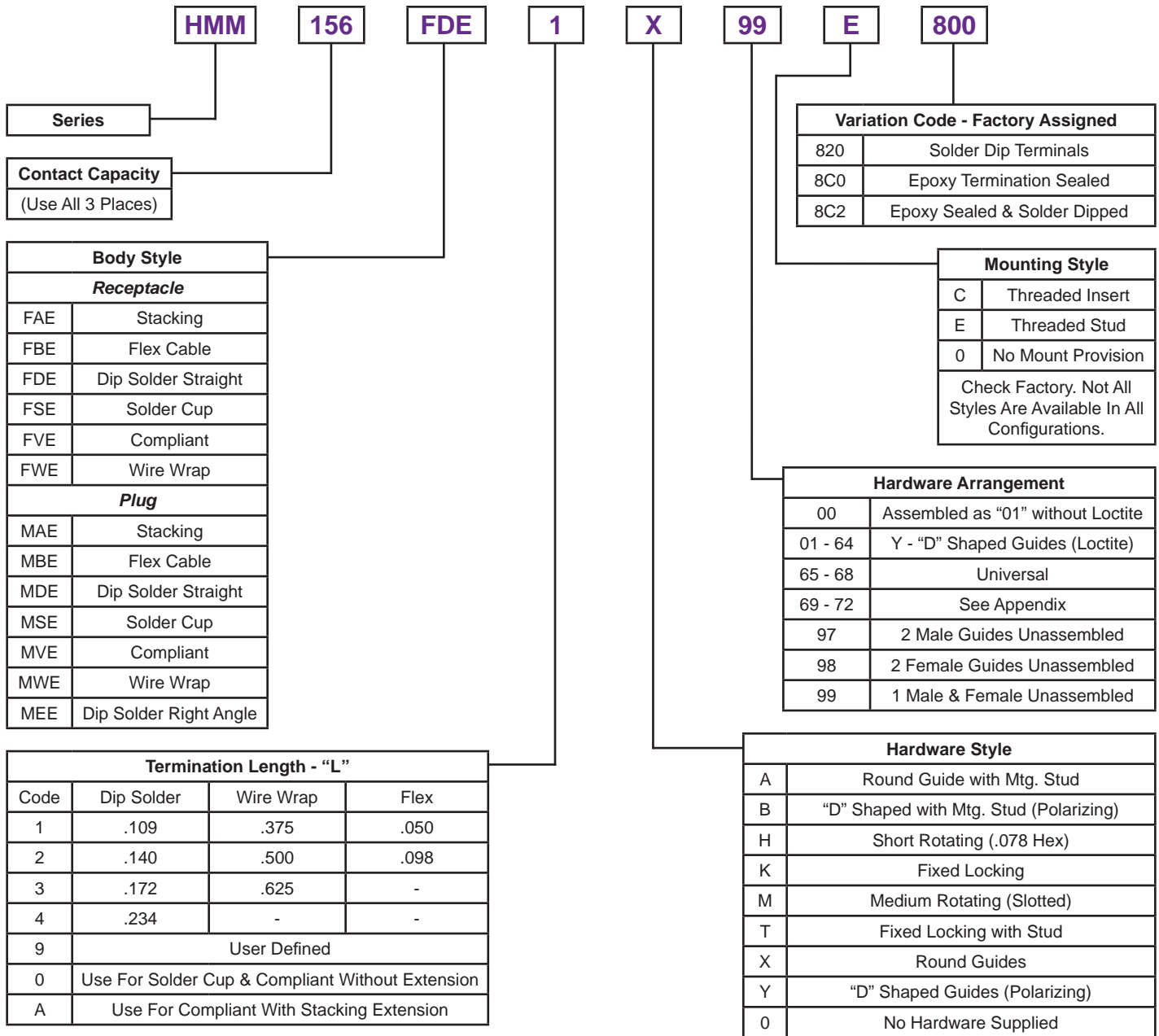


SIZE	A	B	C	D
304	4.770	4.450	1.875	2.225
316	4.920	4.600	1.950	2.300
328	5.070	4.750	2.025	2.375
340	5.220	4.900	2.100	2.450
352	5.370	5.050	2.175	2.525
364	5.520	5.200	2.250	2.600
376	5.670	5.350	2.325	2.675
388	5.820	5.500	2.400	2.750
400	5.970	5.650	2.475	2.825
412	6.120	5.800	2.550	2.900
424	6.270	5.950	2.625	2.975
436	6.420	6.100	2.700	3.050
448	6.570	6.250	2.775	3.125

SIZE	A	B	C	D
460	6.720	6.400	2.850	3.200
472	6.870	6.550	2.925	3.275
484	7.020	6.700	3.000	3.350
496	7.170	6.850	3.075	3.425
508	7.320	7.000	3.150	3.500
520	7.470	7.150	3.225	3.575
532	7.620	7.300	3.300	3.650
544	7.770	7.450	3.375	3.725
556	7.920	7.600	3.450	3.800
568	8.070	7.750	3.525	3.875
580	8.220	7.900	3.600	3.950
592	8.370	8.050	3.675	4.025
604	8.520	8.200	3.750	4.100

**REFER TO APPENDIX FOR  
TERMINATION DETAILS,  
HARDWARE STYLES, PO-  
LARIZATION CHART, AND  
PWB PATTERNS**

## ORDERING CHART 8-ROW



**Series**

**Contact Capacity**  
(Use All 3 Places)

Body Style	
Receptacle	
FAE	Stacking
FBE	Flex Cable
FDE	Dip Solder Straight
FSE	Solder Cup
FVE	Compliant
FWE	Wire Wrap
Plug	
MAE	Stacking
MBE	Flex Cable
MDE	Dip Solder Straight
MSE	Solder Cup
MVE	Compliant
MWE	Wire Wrap
MEE	Dip Solder Right Angle

Termination Length - "L"			
Code	Dip Solder	Wire Wrap	Flex
1	.109	.375	.050
2	.140	.500	.098
3	.172	.625	-
4	.234	-	-
9	User Defined		
0	Use For Solder Cup & Compliant Without Extension		
A	Use For Compliant With Stacking Extension		

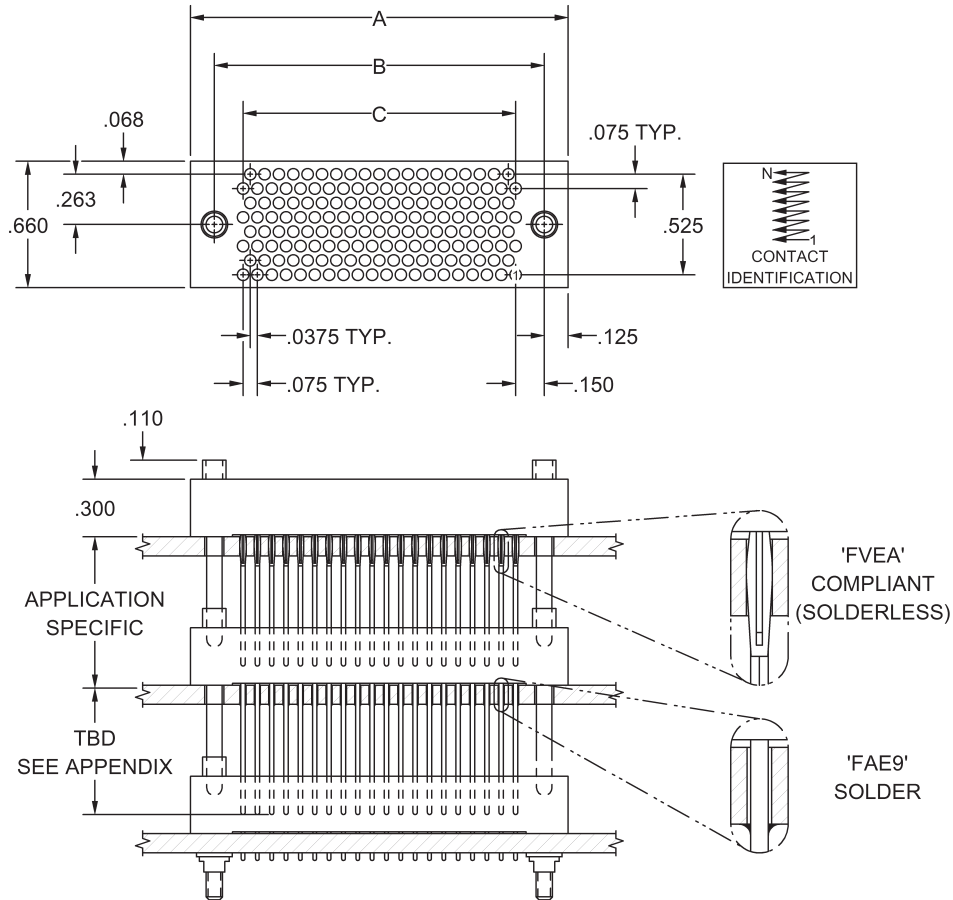
Variation Code - Factory Assigned	
820	Solder Dip Terminals
8C0	Epoxy Termination Sealed
8C2	Epoxy Sealed & Solder Dipped

Mounting Style	
C	Threaded Insert
E	Threaded Stud
0	No Mount Provision
Check Factory. Not All Styles Are Available In All Configurations.	

Hardware Arrangement	
00	Assembled as "01" without Loctite
01 - 64	Y - "D" Shaped Guides (Loctite)
65 - 68	Universal
69 - 72	See Appendix
97	2 Male Guides Unassembled
98	2 Female Guides Unassembled
99	1 Male & Female Unassembled

Hardware Style	
A	Round Guide with Mtg. Stud
B	"D" Shaped with Mtg. Stud (Polarizing)
H	Short Rotating (.078 Hex)
K	Fixed Locking
M	Medium Rotating (Slotted)
T	Fixed Locking with Stud
X	Round Guides
Y	"D" Shaped Guides (Polarizing)
0	No Hardware Supplied

RECEPTACLE, STACKING  
STYLE FAE9, FVEA

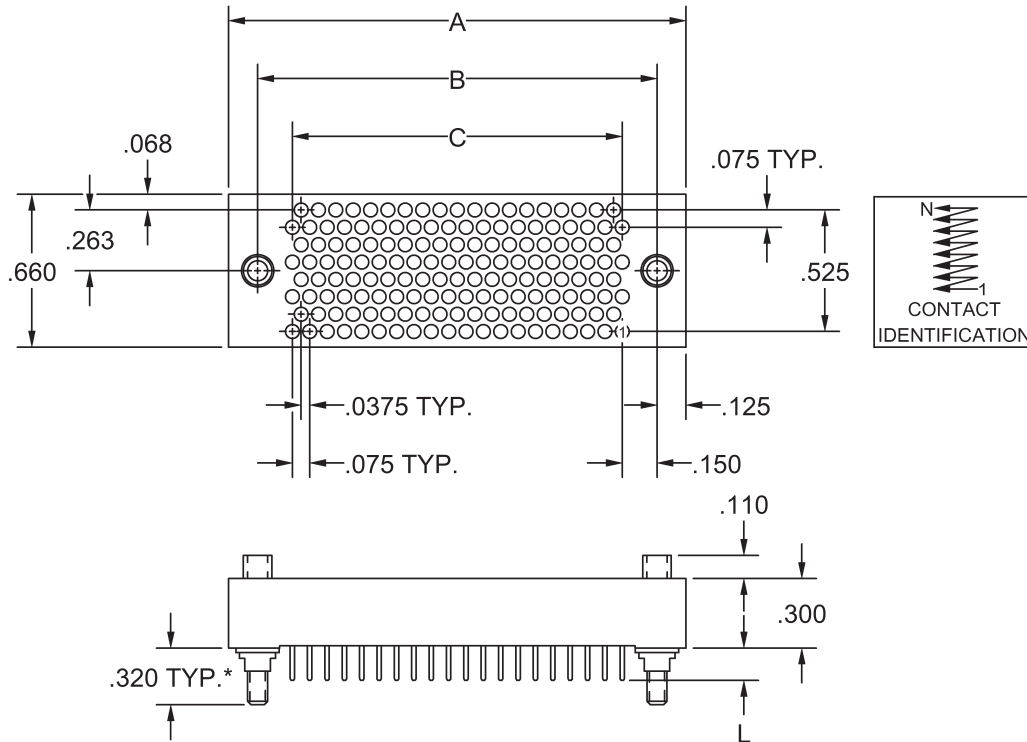


SIZE	A	B	C
156	1.975	1.725	1.425
164	2.050	1.800	1.500
172	2.125	1.875	1.575
180	2.200	1.950	1.650
188	2.275	2.025	1.725
196	2.350	2.100	1.800
204	2.425	2.175	1.875
212	2.500	2.250	1.950
220	2.575	2.325	2.025
228	2.650	2.400	2.100
236	2.725	2.475	2.175

SIZE	A	B	C
244	2.800	2.550	2.250
252	2.875	2.625	2.325
260	2.950	2.700	2.400
268	3.025	2.775	2.475
276	3.100	2.850	2.550
284	3.175	2.925	2.625
292	3.250	3.000	2.700
300	3.325	3.075	2.775
308	3.400	3.150	2.850
316	3.475	3.225	2.925

REFER TO APPENDIX FOR  
TERMINATION DETAILS,  
HARDWARE STYLES, PO-  
LARIZATION CHART, AND  
PWB PATTERNS

RECEPTACLE, STRAIGHT  
STYLE FBE, FDE, FSE, FWE

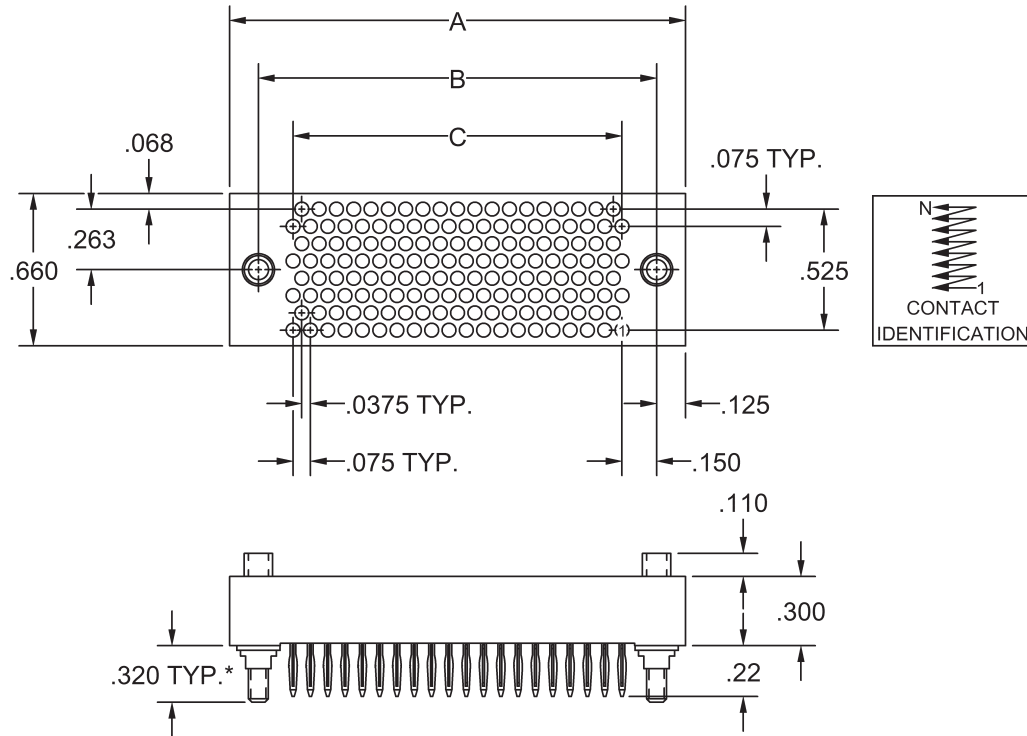


SIZE	A	B	C
156	1.975	1.725	1.425
164	2.050	1.800	1.500
172	2.125	1.875	1.575
180	2.200	1.950	1.650
188	2.275	2.025	1.725
196	2.350	2.100	1.800
204	2.425	2.175	1.875
212	2.500	2.250	1.950
220	2.575	2.325	2.025
228	2.650	2.400	2.100
236	2.725	2.475	2.175

SIZE	A	B	C
244	2.800	2.550	2.250
252	2.875	2.625	2.325
260	2.950	2.700	2.400
268	3.025	2.775	2.475
276	3.100	2.850	2.550
284	3.175	2.925	2.625
292	3.250	3.000	2.700
300	3.325	3.075	2.775
308	3.400	3.150	2.850
316	3.475	3.225	2.925

**\*REFER TO APPENDIX FOR  
TERMINATION DETAILS,  
HARDWARE STYLES, PO-  
LARIZATION CHART, AND  
PWB PATTERNS**

RECEPTACLE, COMPLIANT  
STYLE FVE



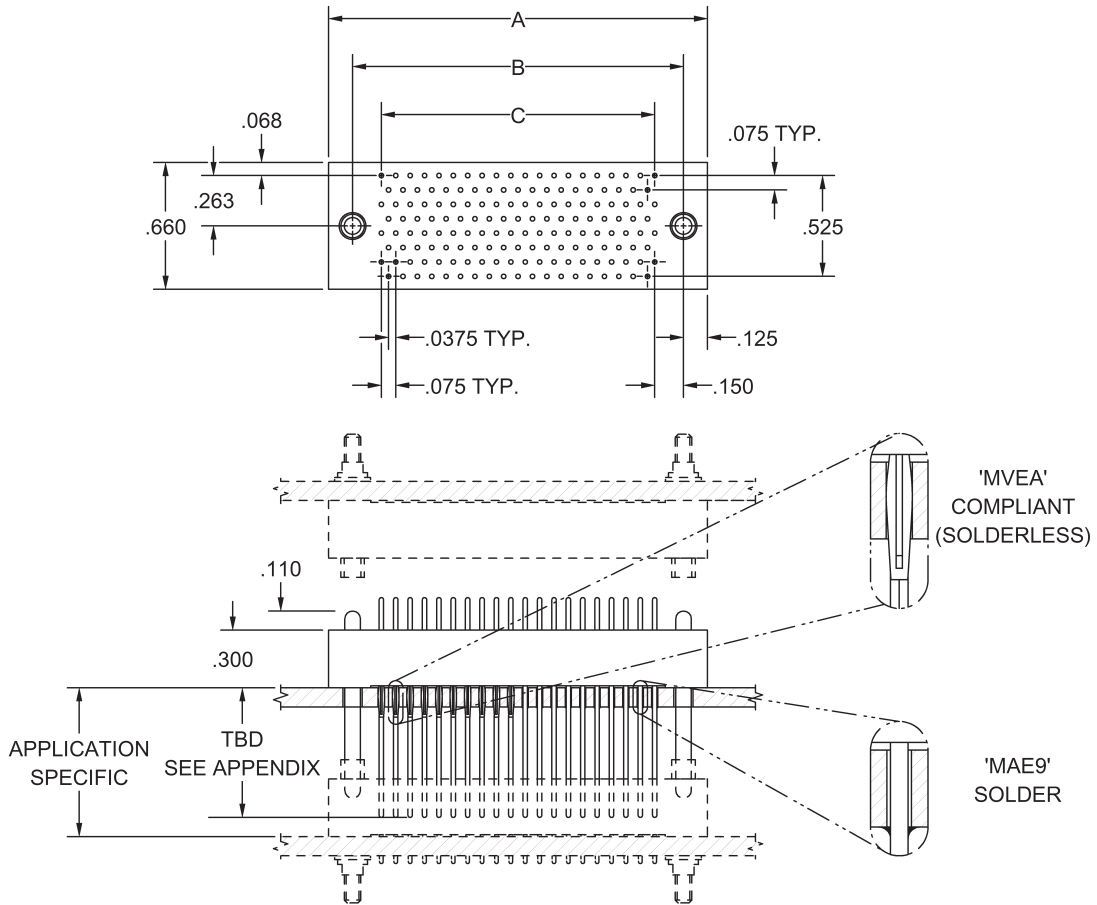
SIZE	A	B	C
156	1.975	1.725	1.425
164	2.050	1.800	1.500
172	2.125	1.875	1.575
180	2.200	1.950	1.650
188	2.275	2.025	1.725
196	2.350	2.100	1.800
204	2.425	2.175	1.875
212	2.500	2.250	1.950
220	2.575	2.325	2.025
228	2.650	2.400	2.100
236	2.725	2.475	2.175

SIZE	A	B	C
244	2.800	2.550	2.250
252	2.875	2.625	2.325
260	2.950	2.700	2.400
268	3.025	2.775	2.475
276	3.100	2.850	2.550
284	3.175	2.925	2.625
292	3.250	3.000	2.700
300	3.325	3.075	2.775
308	3.400	3.150	2.850
316	3.475	3.225	2.925

**\*REFER TO APPENDIX FOR  
TERMINATION DETAILS,  
HARDWARE STYLES, PO-  
LARIZATION CHART, AND  
PWB PATTERNS**



**PLUG, STACKING  
STYLE MAE9, MVEA**

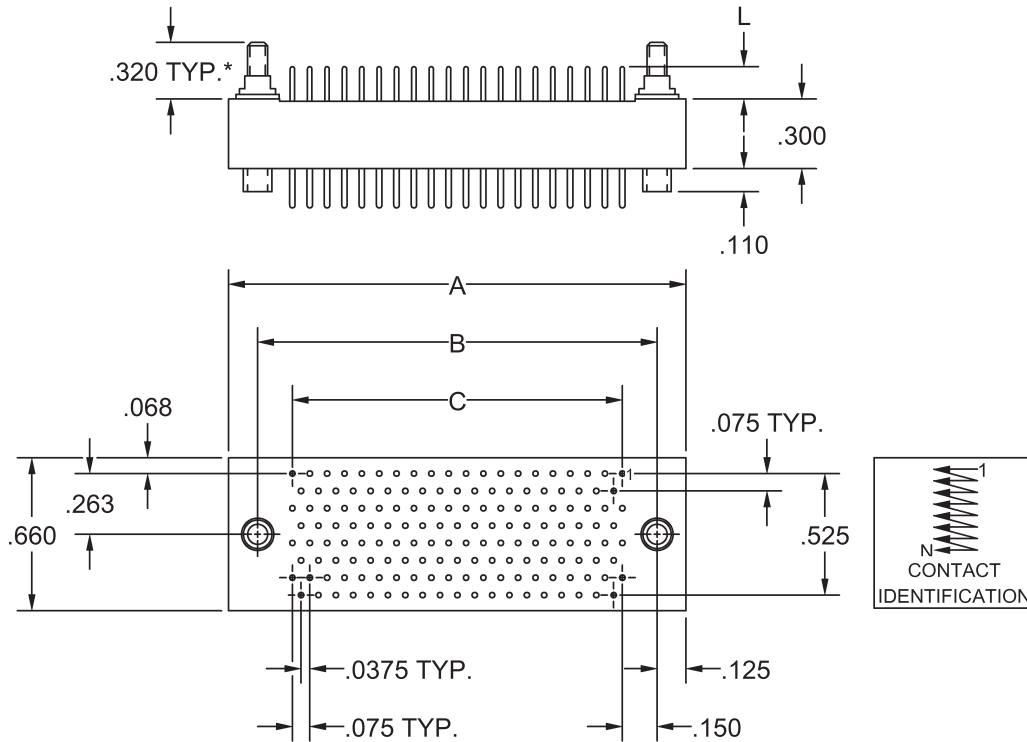


SIZE	A	B	C
156	1.975	1.725	1.425
164	2.050	1.800	1.500
172	2.125	1.875	1.575
180	2.200	1.950	1.650
188	2.275	2.025	1.725
196	2.350	2.100	1.800
204	2.425	2.175	1.875
212	2.500	2.250	1.950
220	2.575	2.325	2.025
228	2.650	2.400	2.100
236	2.725	2.475	2.175

SIZE	A	B	C
244	2.800	2.550	2.250
252	2.875	2.625	2.325
260	2.950	2.700	2.400
268	3.025	2.775	2.475
276	3.100	2.850	2.550
284	3.175	2.925	2.625
292	3.250	3.000	2.700
300	3.325	3.075	2.775
308	3.400	3.150	2.850
316	3.475	3.225	2.925

**REFER TO APPENDIX FOR  
TERMINATION DETAILS,  
HARDWARE STYLES, PO-  
LARIZATION CHART, AND  
PWB PATTERNS**

**PLUG, STRAIGHT  
STYLE MBE, MDE, MSE, MWE**

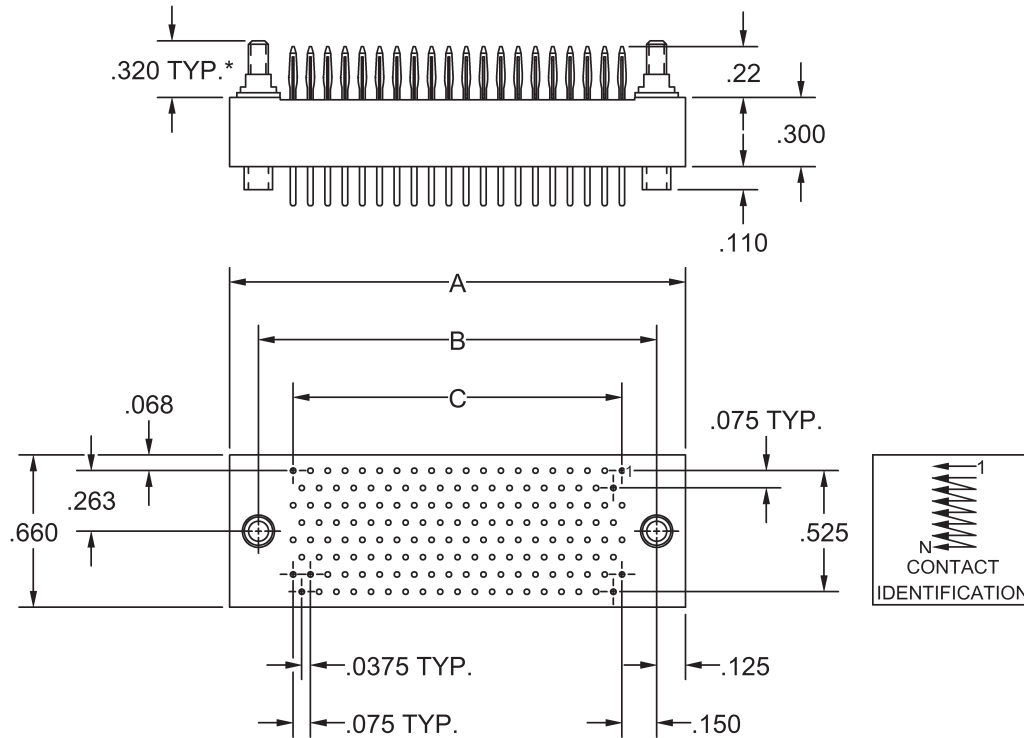


SIZE	A	B	C
156	1.975	1.725	1.425
164	2.050	1.800	1.500
172	2.125	1.875	1.575
180	2.200	1.950	1.650
188	2.275	2.025	1.725
196	2.350	2.100	1.800
204	2.425	2.175	1.875
212	2.500	2.250	1.950
220	2.575	2.325	2.025
228	2.650	2.400	2.100
236	2.725	2.475	2.175

SIZE	A	B	C
244	2.800	2.550	2.250
252	2.875	2.625	2.325
260	2.950	2.700	2.400
268	3.025	2.775	2.475
276	3.100	2.850	2.550
284	3.175	2.925	2.625
292	3.250	3.000	2.700
300	3.325	3.075	2.775
308	3.400	3.150	2.850
316	3.475	3.225	2.925

**\*REFER TO APPENDIX FOR  
TERMINATION DETAILS,  
HARDWARE STYLES, PO-  
LARIZATION CHART, AND  
PWB PATTERNS**

**PLUG, COMPLIANT  
STYLE MVE**

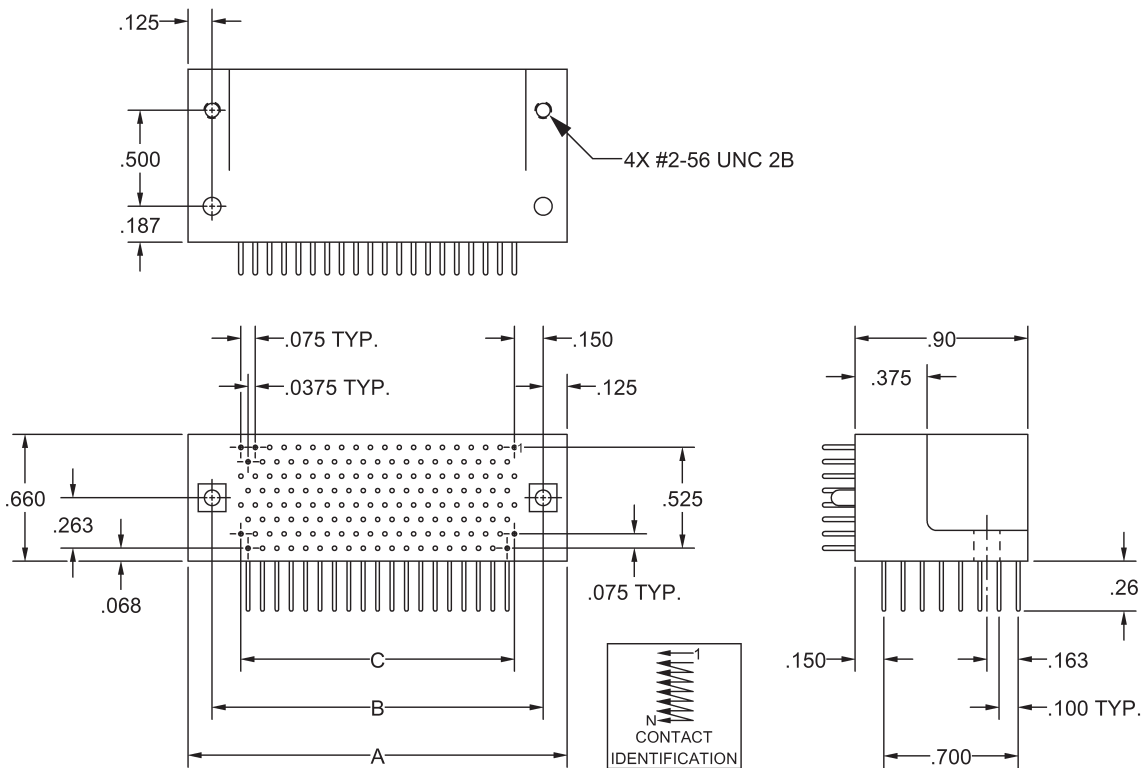


SIZE	A	B	C
156	1.975	1.725	1.425
164	2.050	1.800	1.500
172	2.125	1.875	1.575
180	2.200	1.950	1.650
188	2.275	2.025	1.725
196	2.350	2.100	1.800
204	2.425	2.175	1.875
212	2.500	2.250	1.950
220	2.575	2.325	2.025
228	2.650	2.400	2.100
236	2.725	2.475	2.175

SIZE	A	B	C
244	2.800	2.550	2.250
252	2.875	2.625	2.325
260	2.950	2.700	2.400
268	3.025	2.775	2.475
276	3.100	2.850	2.550
284	3.175	2.925	2.625
292	3.250	3.000	2.700
300	3.325	3.075	2.775
308	3.400	3.150	2.850
316	3.475	3.225	2.925

**\*REFER TO APPENDIX FOR  
TERMINATION DETAILS,  
HARDWARE STYLES, PO-  
LARIZATION CHART, AND  
PWB PATTERNS**

## PLUG, RIGHT ANGLE STYLE MEE



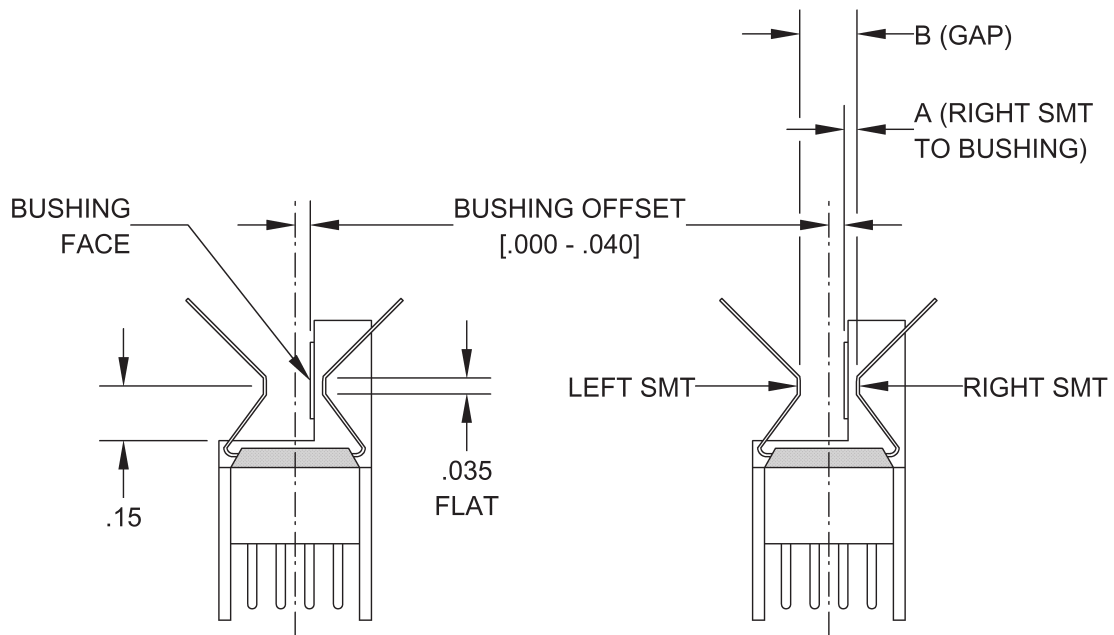
SIZE	A	B	C
156	1.975	1.725	1.425
164	2.050	1.800	1.500
172	2.125	1.875	1.575
180	2.200	1.950	1.650
188	2.275	2.025	1.725
196	2.350	2.100	1.800
204	2.425	2.175	1.875
212	2.500	2.250	1.950
220	2.575	2.325	2.025
228	2.650	2.400	2.100
236	2.725	2.475	2.175

SIZE	A	B	C
244	2.800	2.550	2.250
252	2.875	2.625	2.325
260	2.950	2.700	2.400
268	3.025	2.775	2.475
276	3.100	2.850	2.550
284	3.175	2.925	2.625
292	3.250	3.000	2.700
300	3.325	3.075	2.775
308	3.400	3.150	2.850
316	3.475	3.225	2.925

REFER TO APPENDIX FOR  
TERMINATION DETAILS,  
HARDWARE STYLES, PO-  
LARIZATION CHART, AND  
PWB PATTERNS

## APPLICATION NOTES

### STYLE 'MRE' CARD-EDGE SURFACE MOUNT 4 & 6 ROW



This style of termination is semi-custom. It is specific to the individual user's modules construction. A substantial number of previously developed forms exist, but are too numerous for inclusion here. Please contact the factory before assigning specific values to bushing offset and SMT 'A' and 'B' dimensions.

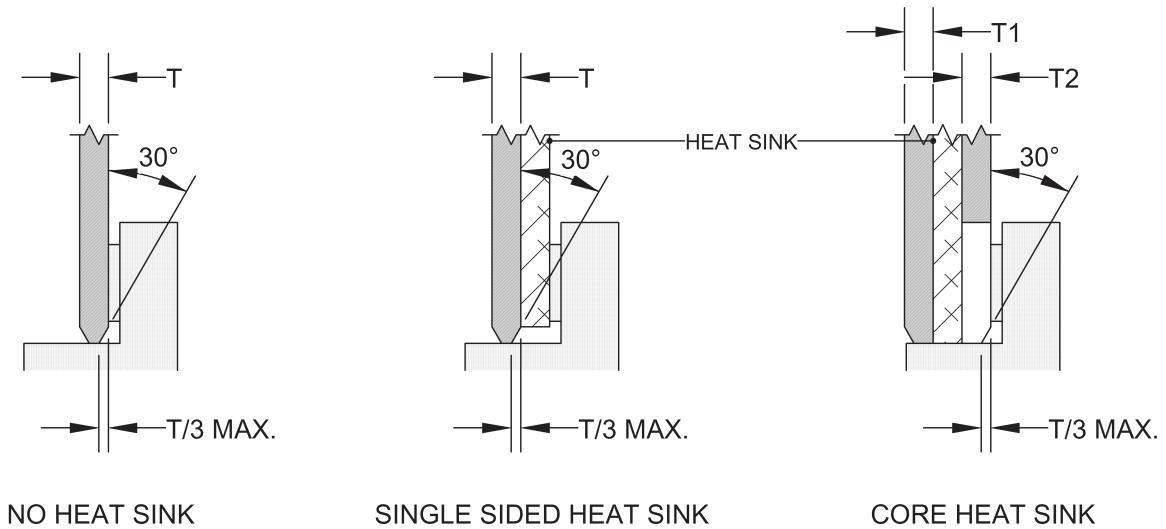
For communication purposes, the terminology used in the above views will be helpful.

For conditions where the right SMT is left of the bushing face, the 'A' dimension will be shown as a negative. This will often be the case where the module's construction has no core heat sink.

When a core heat sink is present, design intent is to have the bushing face against the core sink surface; further, it is intended that this same surface be the heat transfer surface for solid cores using card slot surface as a system sink.

For initial design purposes, it is necessary to determine the nominal thickness and tolerance for each element of the module. This enables gap values to be chosen so that "worst case" conditions will still result in the module pads being under compression prior to SMT soldering. Pad tension, or lifting moment, can lead to future pad failure, particularly under shock and/or vibration.

**APPLICATION NOTES**  
**STYLE 'MRE' CARD-EDGE SURFACE MOUNT**  
**4 & 6 ROW**

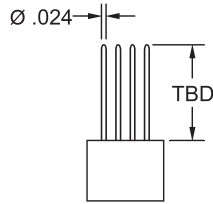


The above view shows recommended leading edge configuration for use with MRE style plugs. Chamfered leading edges substantially reduce operator force required to seat PWA/PWB'S.

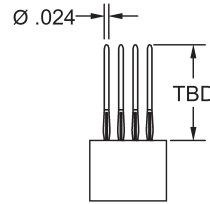
The two right hand views show recommended mounting scheme for use with modules containing a heat sink. Use of this scheme will greatly reduce the cumulative tolerance issues in packaging. It is design intent that the surface of the heat sink in contact with the bushing be the surface which is used for heat transfer; in packaging employing wedge locks, this is the surface opposite the wedge lock mechanism.

**TERMINATION STYLES  
RECEPTACLE (.315" INSULATOR), 4 ROW  
HARDWARE OMITTED FOR CLARITY**

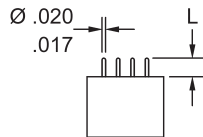
F AE9  
STACKING



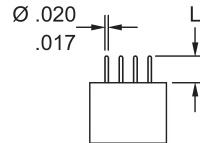
F VEA  
COMPLIANT  
STACKING



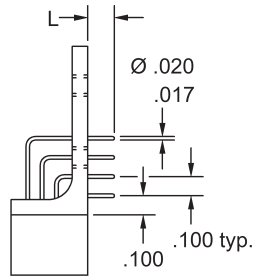
F BE  
FLEX CABLE



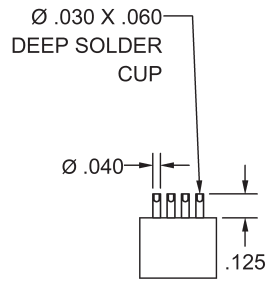
F DE  
DIP SOLDER  
STRAIGHT



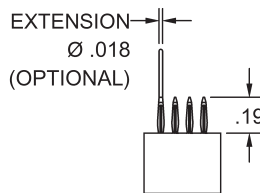
F EE  
DIP SOLDER  
RIGHT ANGLE



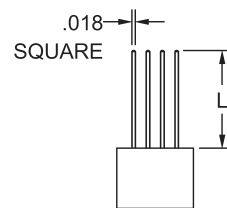
F SE  
SOLDER CUP



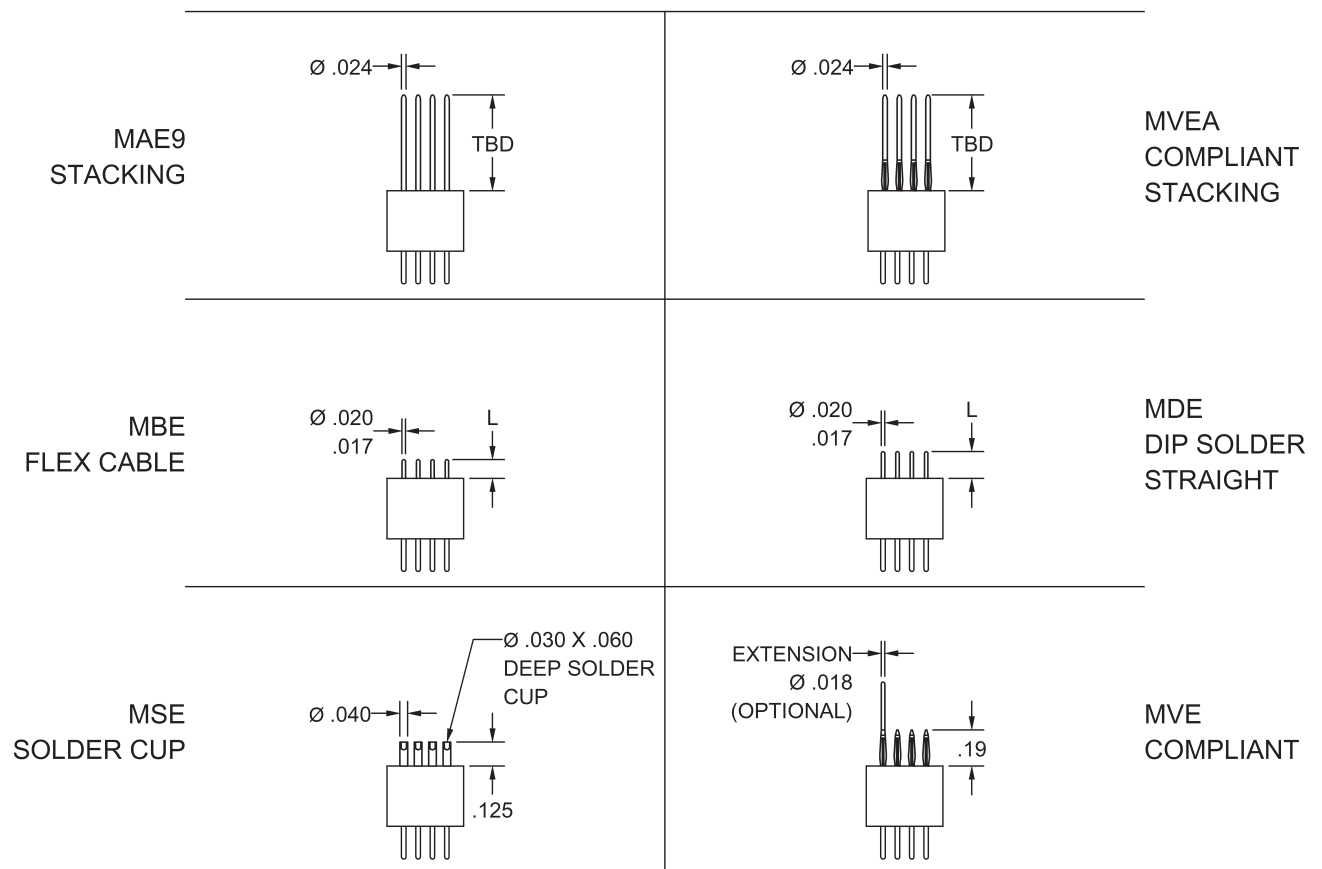
F VE  
COMPLIANT



F WE  
WIRE WRAP



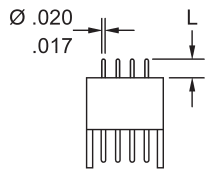
**TERMINATION STYLES  
 PLUG (.315" INSULATOR), 4 ROW  
 HARDWARE OMITTED FOR CLARITY  
 PIN SHIELDS OPTIONAL**



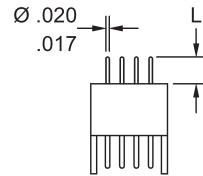


**TERMINATION STYLES  
PLUG, LOW PROFILE (.270" INSULATOR), 4 ROW  
HARDWARE OMITTED FOR CLARITY**

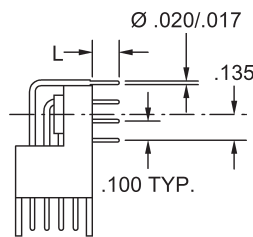
RBE  
FLEX CABLE



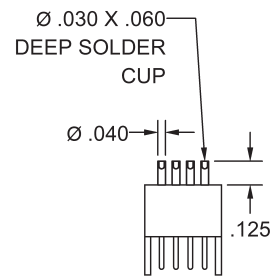
RDE  
DIP SOLDER  
STRAIGHT



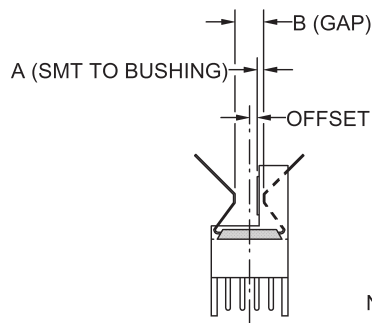
MEE  
DIP SOLDER  
RIGHT ANGLE



RSE  
SOLDER CUP



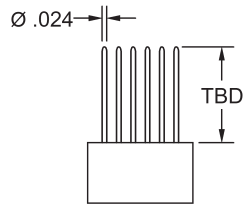
MRE  
SURFACE MOUNT



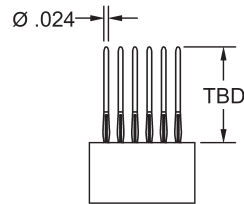
REFER TO APPLICATION  
NOTES FOR MORE DETAILS

**TERMINATION STYLES**  
**RECEPTACLE (.315" INSULATOR), 6 ROW**  
**HARDWARE OMITTED FOR CLARITY**

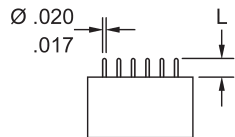
FAE9  
 STACKING



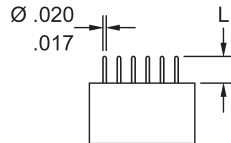
FVEA  
 COMPLIANT  
 STACKING



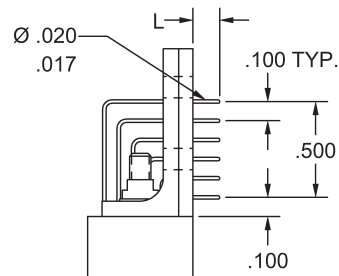
FBE  
 FLEX CABLE



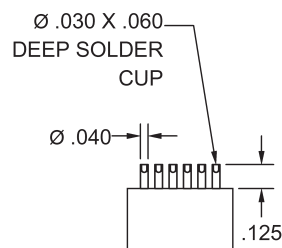
FDE  
 DIP SOLDER  
 STRAIGHT



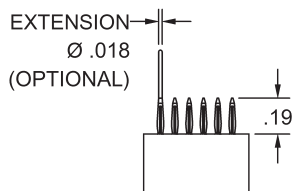
FEE  
 DIP SOLDER  
 RIGHT ANGLE



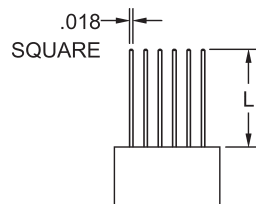
FSE  
 SOLDER CUP



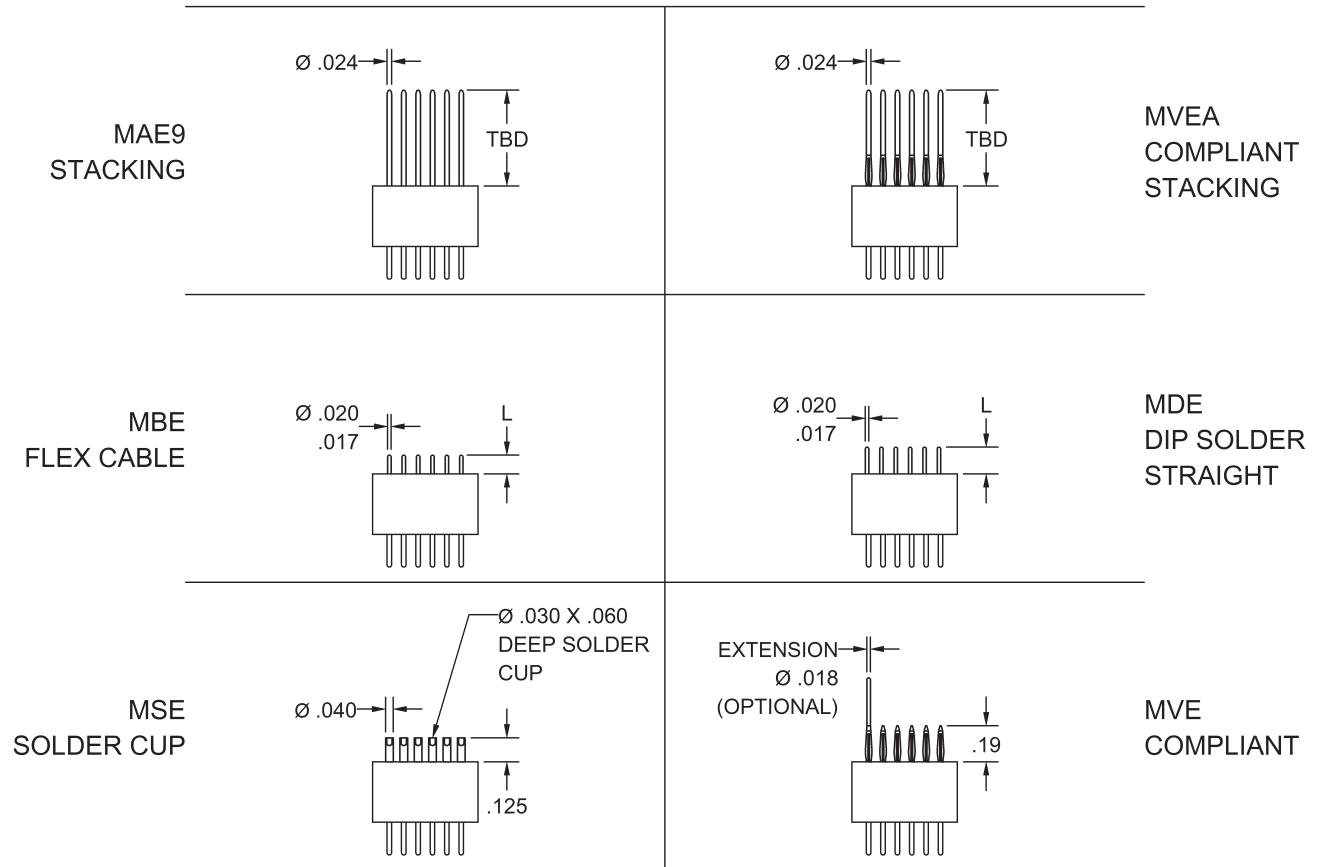
FVE  
 COMPLIANT



FWE  
 WIRE WRAP

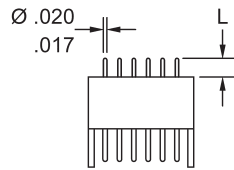


**TERMINATION STYLES  
PLUG (.315" INSULATOR), 6 ROW  
HARDWARE OMITTED FOR CLARITY  
PIN SHIELDS OPTIONAL**

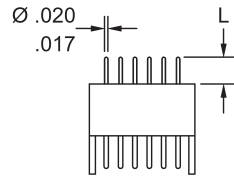


**TERMINATION STYLES**  
**PLUG, LOW PROFILE (.270" INSULATOR), 6 ROW**  
**HARDWARE OMITTED FOR CLARITY**

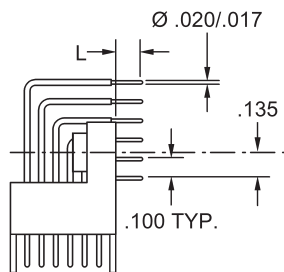
RBE  
 FLEX CABLE



RDE  
 DIP SOLDER  
 STRAIGHT

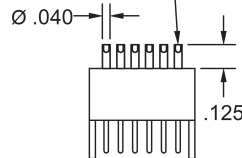


MEE  
 DIP SOLDER  
 RIGHT ANGLE

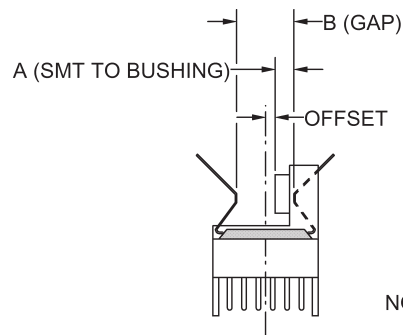


Ø .030 X .060  
 DEEP SOLDER  
 CUP

RSE  
 SOLDER CUP



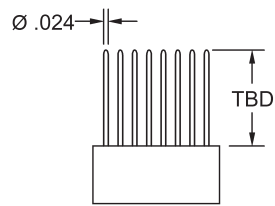
MRE  
 SURFACE MOUNT



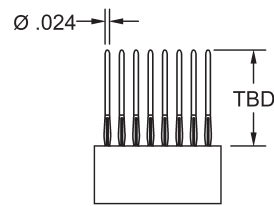
REFER TO APPLICATION  
 NOTES FOR MORE DETAILS

**TERMINATION STYLES**  
**RECEPTACLE (.300" INSULATOR), 8 ROW**  
**HARDWARE OMITTED FOR CLARITY**

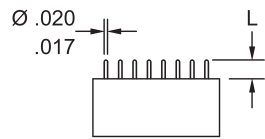
FAE9  
STACKING



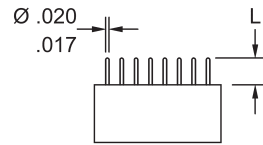
FVEA  
COMPLIANT  
STACKING



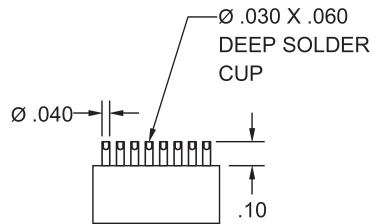
FBE  
FLEX CABLE



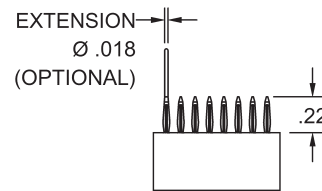
FDE  
DIP SOLDER  
STRAIGHT



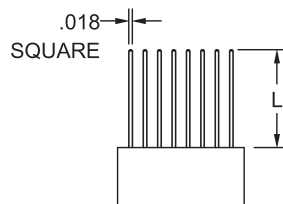
FSE  
SOLDER CUP



FVE  
COMPLIANT

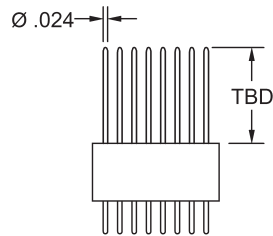


FWE  
WIRE WRAP

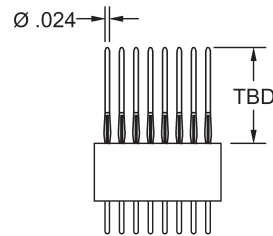


**TERMINATION STYLES**  
**PLUG (.300" INSULATOR EXCEPT 'MEE'), 8 ROW**  
**HARDWARE OMITTED FOR CLARITY**

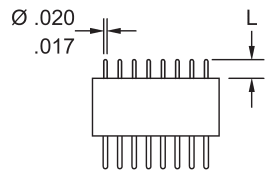
MAE9  
STACKING



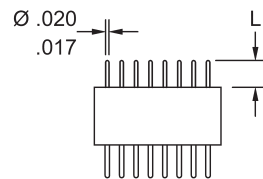
MVEA  
COMPLIANT  
STACKING



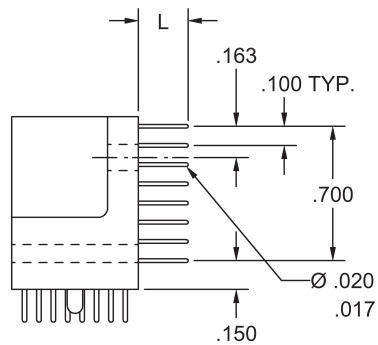
MBE  
FLEX CABLE



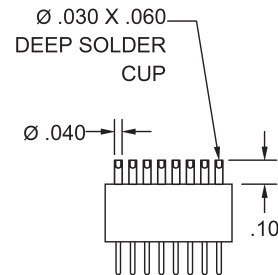
MDE  
DIP SOLDER  
STRAIGHT



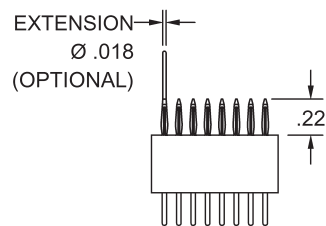
MEE  
DIP SOLDER  
RIGHT ANGLE



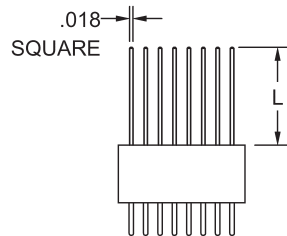
MSE  
SOLDER CUP



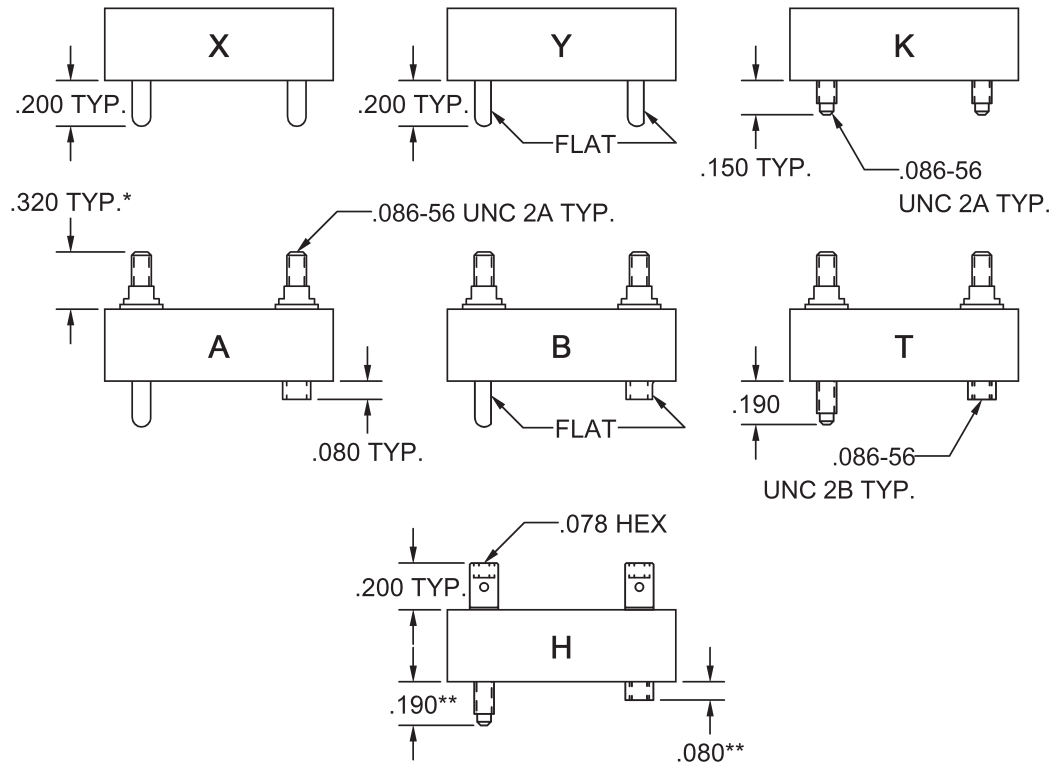
MVE  
COMPLIANT



MWE  
WIRE WRAP



## HARDWARE STYLES 4 & 6 ROW



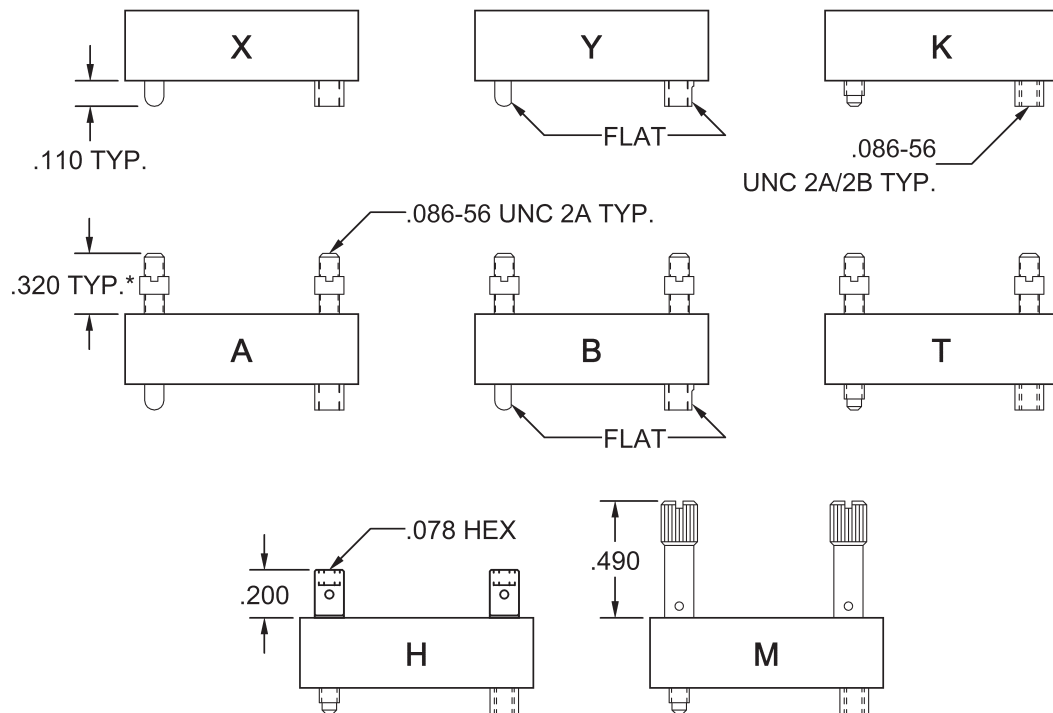
\*.320 default stud length. Contact factory for alternate lengths and variation code assignment.

\*\* .160 when used with .270 low profile insulator.

HARDWARE COMPATIBILITY							
	A	B	H	K	T	X	Y
A	•					•	
B		•					•
H				•	•		
K			•				
T			•				
X	•					•	
Y		•					•

HARDWARE-INSULATOR COMPATIBILITY														
	A		B		H		K		T		X		Y	
	PIN	SOCKET	PIN	SOCKET	SCREW	SOCKET	SCREW	SOCKET	SCREW	SOCKET	PIN	SOCKET	PIN	SOCKET
.315	•	•	•	•	•	•	•		•	•	•		•	
.270 LOW PROF.	•	•	•	•	•	•	•		•		•		•	
2PC .315		•		•						•				

## HARDWARE STYLES 8 ROW

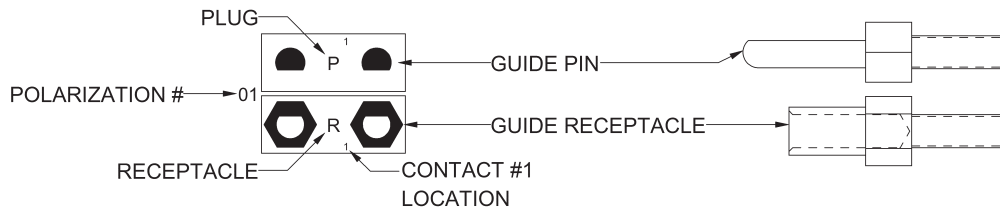


\*.320 default stud length. Contact factory for alternate lengths and variation code assignment.  
 M55302/57-01 spanner wrench required for assembly of X,Y,K,A,B,T.  
 Only style X,Y,K,H available for 8 row MEE (dip solder right angle) connectors.

HARDWARE COMPATIBILITY								
	A	B	H	K	M	T	X	Y
A	•						•	
B		•						•
H				•		•		
K			•		•			
M				•		•		
T			•		•			
X	•						•	
Y		•						•



## POLARIZATION CHART 4 & 6 ROW *AS VIEWED FROM THE MATING FACE*



**USE FOR HARDWARE STYLE: Y,B**

01	07	13	19	25	31
02	08	14	20	26	32
03	09	15	21	27	33
04	10	16	22	28	34
05	11	17	23	29	35
06	12	18	24	30	36

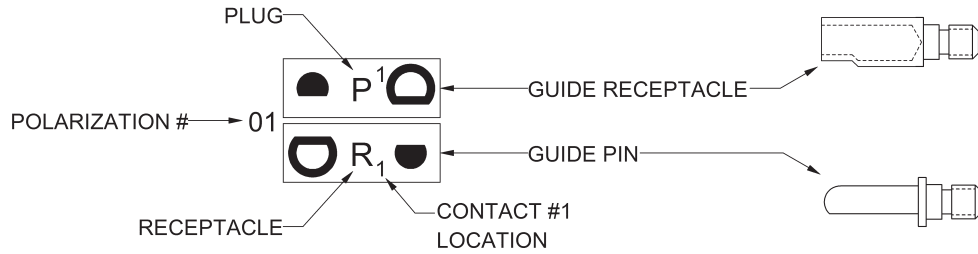
**UNIVERSAL TEST**



**USE FOR HARDWARE STYLE: A,H,K,T,X**



## POLARIZATION CHART 8 ROW *AS VIEWED FROM THE MATING FACE*



**USE FOR HARDWARE STYLE: Y AND B**

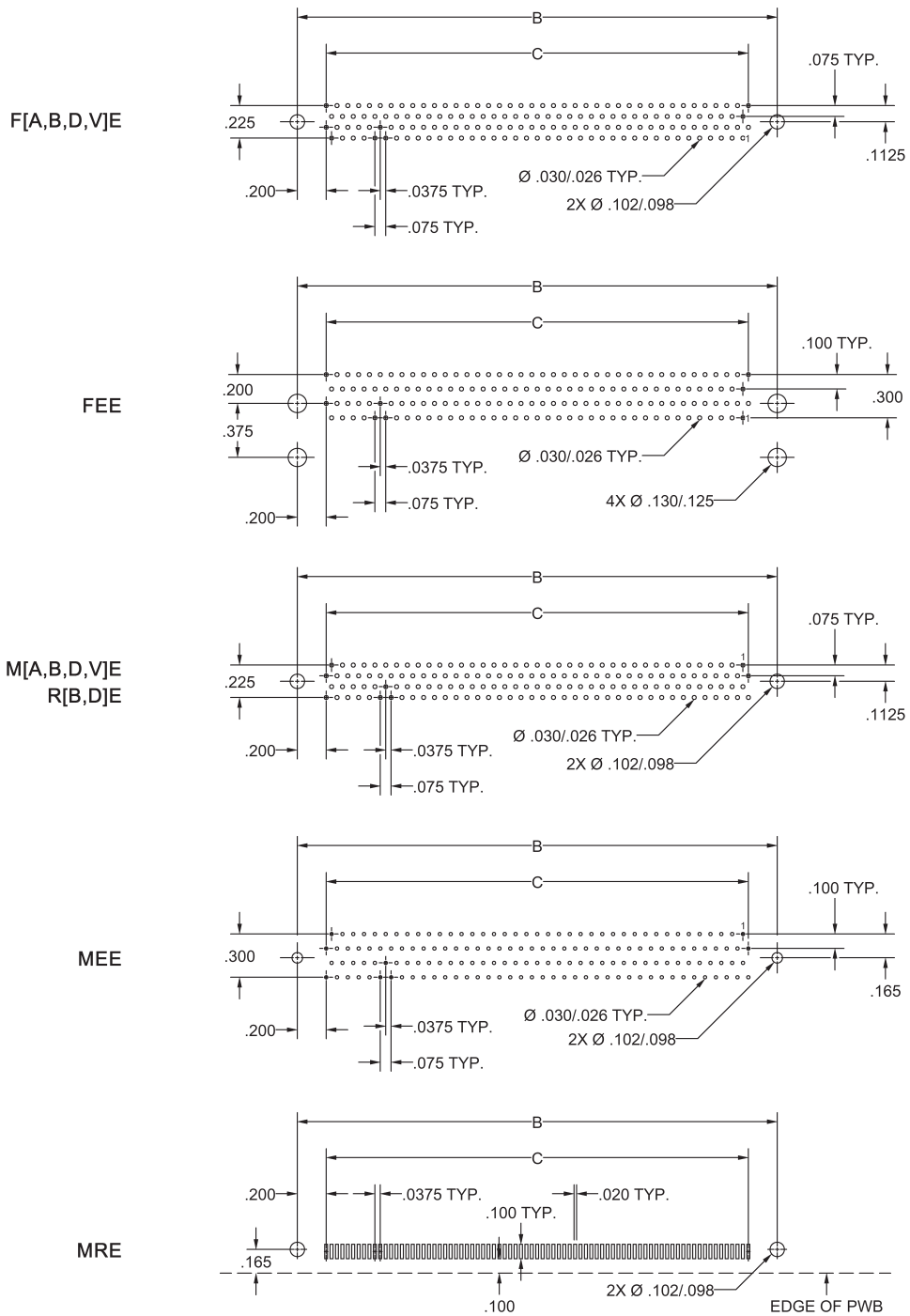
01		09		17		25		33		41		49		57	
02		10		18		26		34		42		50		58	
03		11		19		27		35		43		51		59	
04		12		20		28		36		44		52		60	
05		13		21		29		37		45		53		61	
06		14		22		30		38		46		54		62	
07		15		23		31		39		47		55		63	
08		16		24		32		40		48		56		64	

**UNIVERSAL TEST**

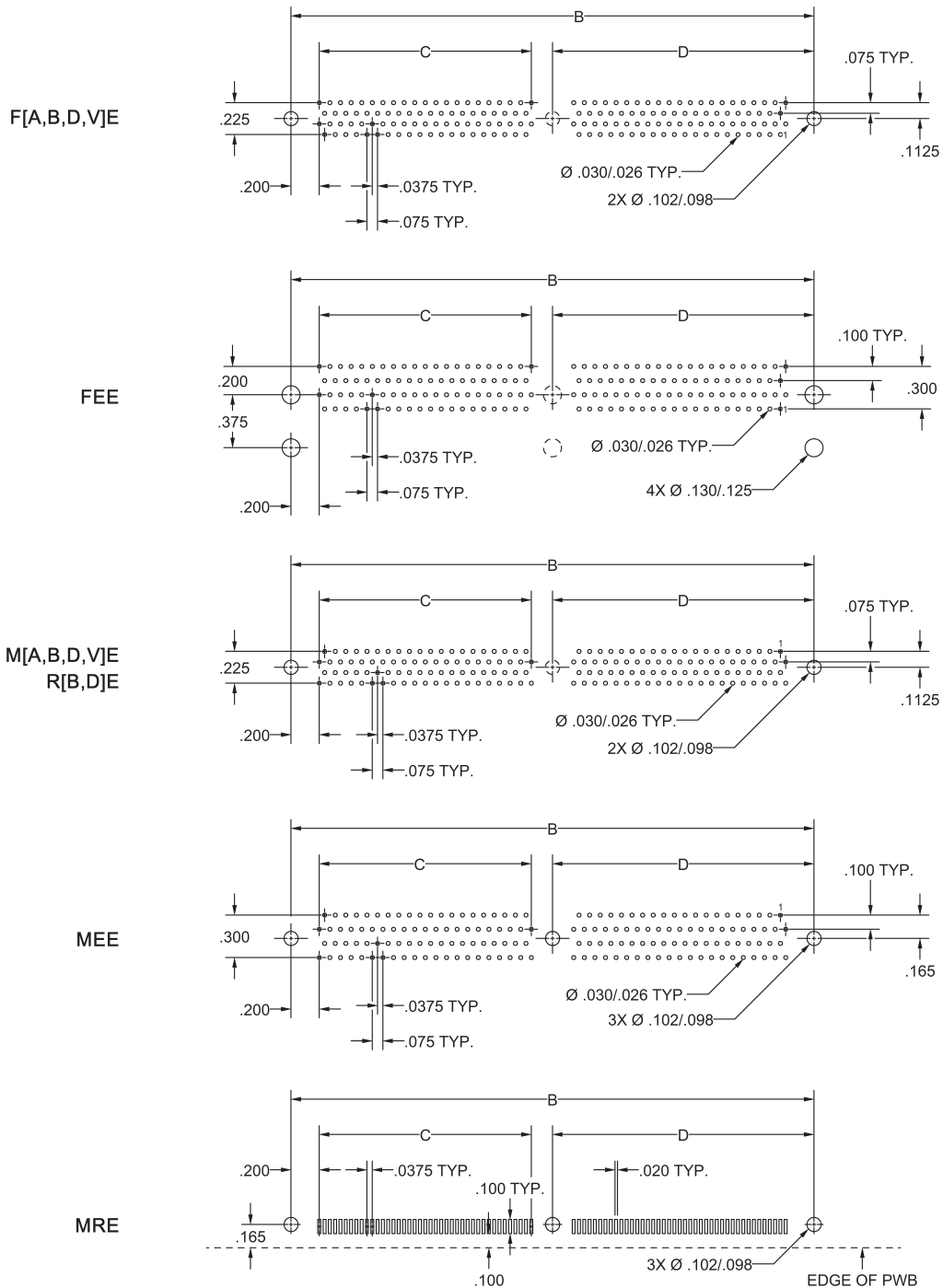
**USE FOR HARDWARE STYLE: A,H,K,M,T,X**

65		66		67		68		69		70		71		72	
----	--	----	--	----	--	----	--	----	--	----	--	----	--	----	--

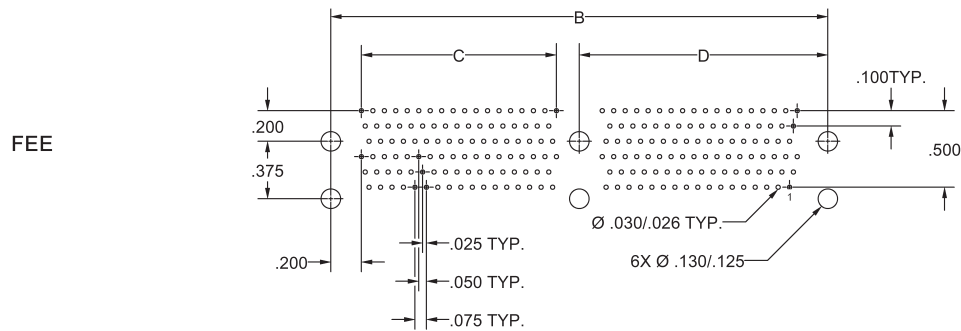
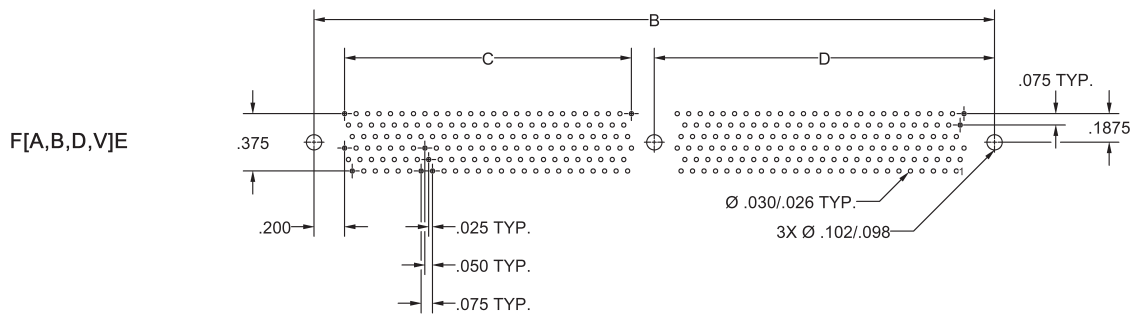
**PWB PATTERN**  
**4 ROW UNINTERRUPTED**  
*AS VIEWED FROM THE CONNECTOR SIDE*



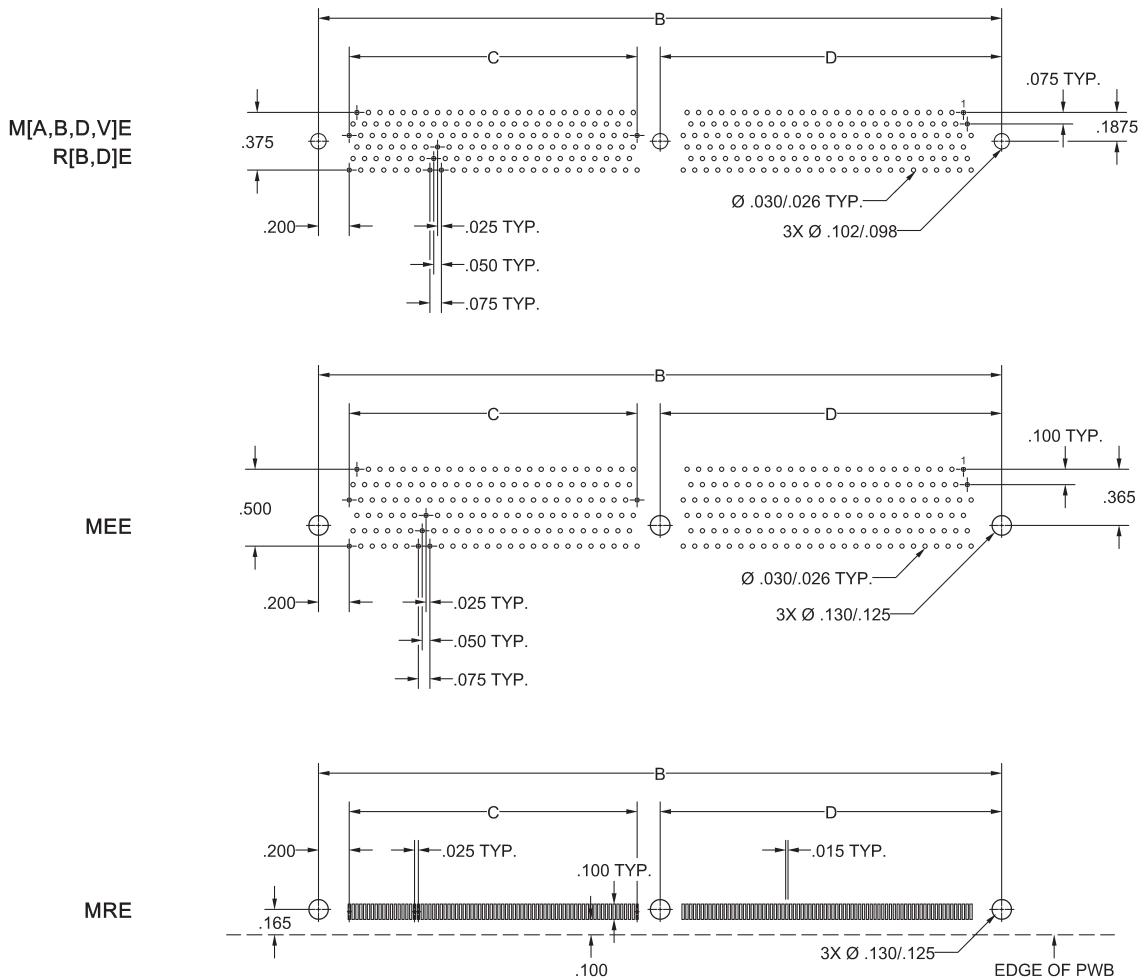
**PWB PATTERN**  
**4 ROW INTERRUPTED**  
*AS VIEWED FROM THE CONNECTOR SIDE*



**PWB PATTERN**  
**6 ROW RECEPTACLE, INTERRUPTED**  
*AS VIEWED FROM THE CONNECTOR SIDE*

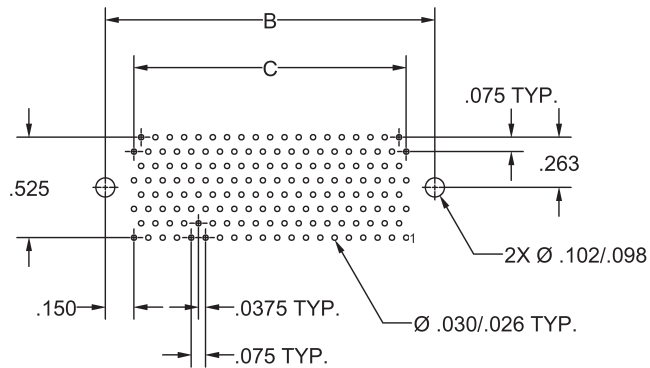


**PWB PATTERN**  
**6 ROW PLUG, INTERRUPTED**  
*AS VIEWED FROM THE CONNECTOR SIDE*

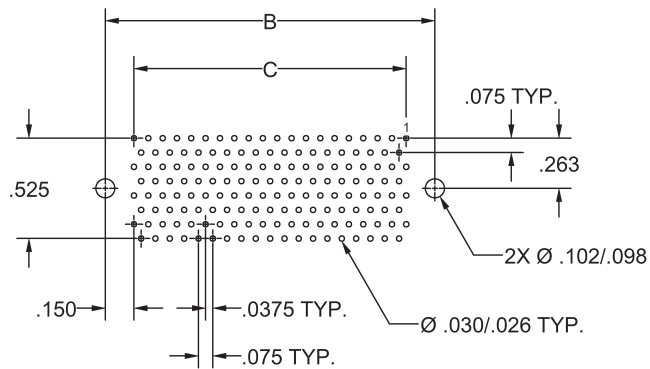


**PWB PATTERN  
8 ROW UNINTERRUPTED  
AS VIEWED FROM THE CONNECTOR SIDE**

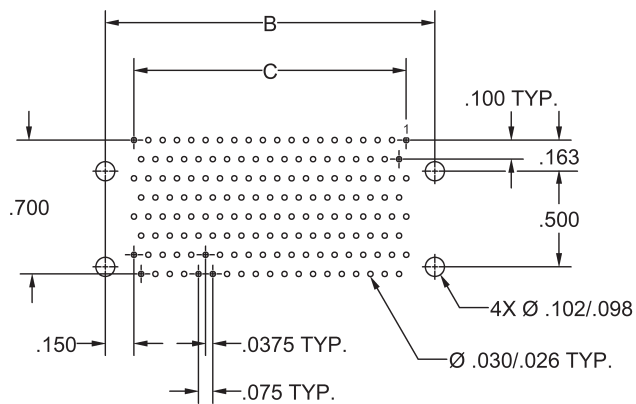
F[A,B,D,V]E



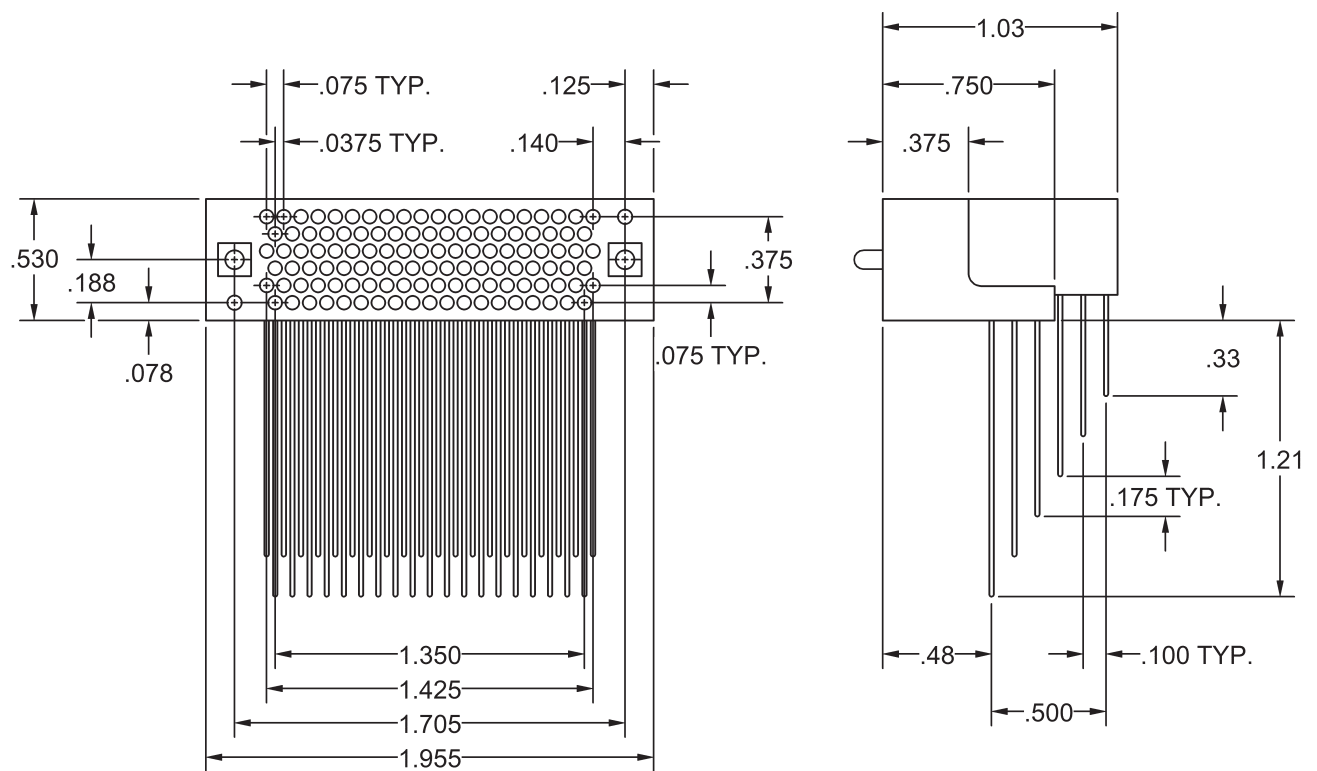
M[A,B,D,V]E



MEE



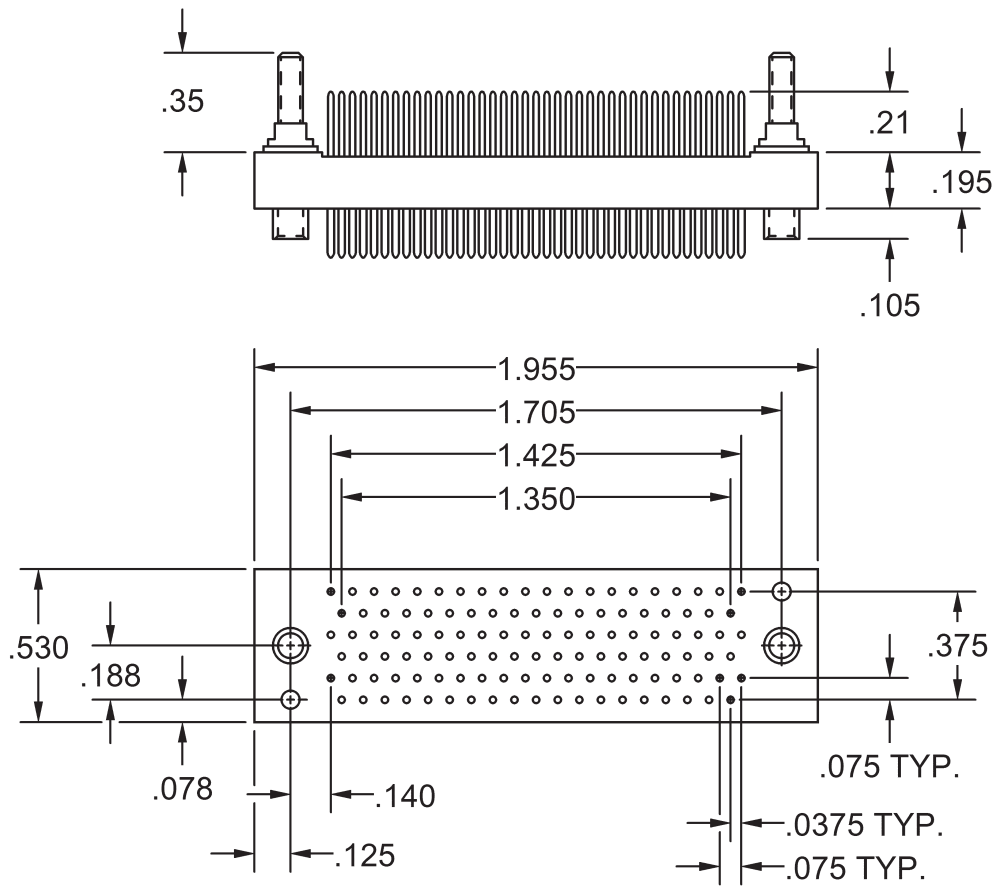
### HMM117FEE... RECEPTACLE, RIGHT ANGLE



Note:  
Rotating Jackscrews Available



HMM117MDE...  
PLUG, STRAIGHT



Note:  
Rotating Jacksockets Available



## **IEH CORPORATION**

140 58TH STREET, 8E, BROOKLYN, NY 11220

PHONE (718) 492-4448 • FAX (718) 492-9898

[www.iehcorp.com](http://www.iehcorp.com) • [ieh@iehcorp.com](mailto:ieh@iehcorp.com)